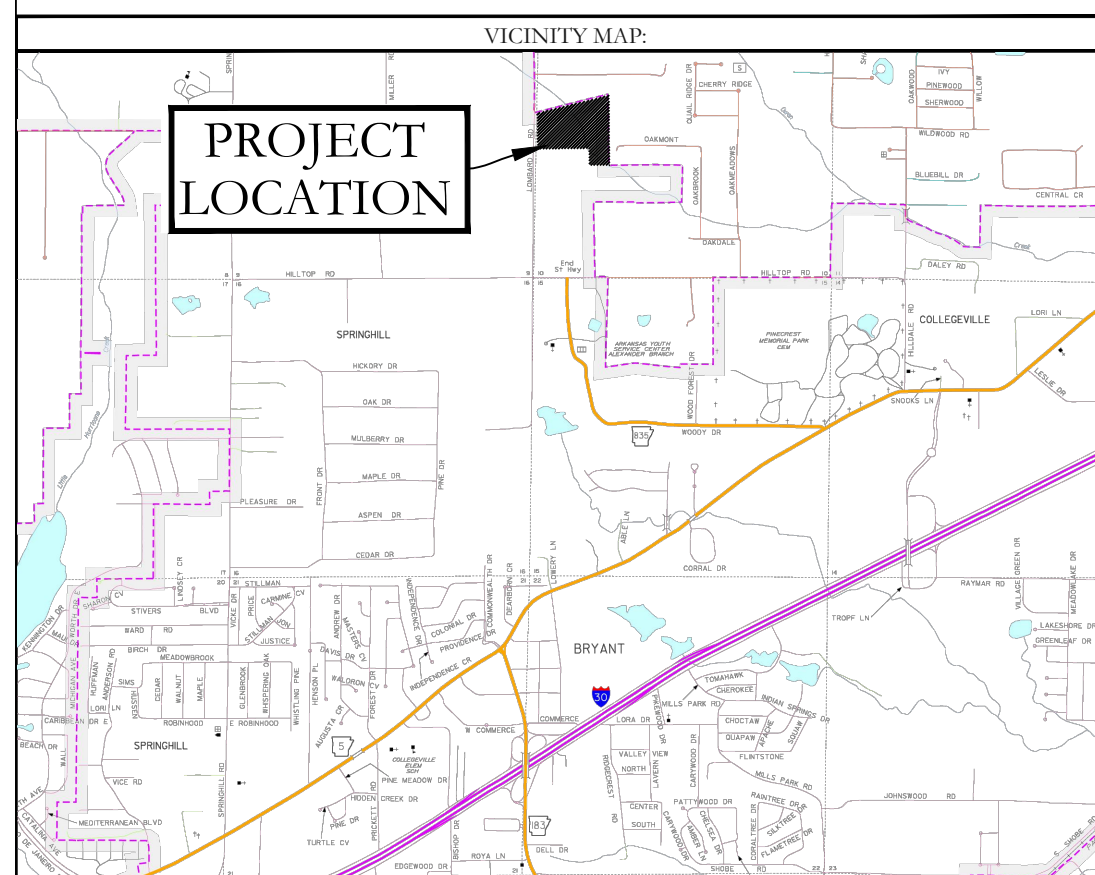


**SANITARY SEWER AND WATER AS-BUILTS
ROMAN HEIGHTS SUBDIVISION PHASE 2
IN THE CITY OF BRYANT, SALINE COUNTY, ARKANSAS**



SEWER LEGEND:		WATER LEGEND:	
	SEWER SERVICE		GATE VALVE
	SEWER SERVICE		REDUCER
			WATER LINE
			FIRE HYDRANT
			DOUBLE WATER SERVICE
			SINGLE WATER SERVICE
NOTE: PROPOSED SEWER MAINS IS TO HAVE TRACER WIRE. ALSO A NON-BIODEGRADABLE TAPE IDENTIFYING THE LINE AS "SEWER" MUST BE BURIED IN THE TRENCH ABOVE THE SEWER MAINS.		NOTE: ALL FIRE HYDRANT LEADERS HAVE A GATE VALVE BETWEEN MAIN AND FIRE HYDRANT.	



HOPE CONSULTING ENGINEERS - SURVEYORS		117 S. Market Street, Benton, Arkansas 72015 PH. (501)315-2626 FAX (501) 315-0024 www.hopeconsulting.com	
FOR USE AND BENEFIT OF: BULL DEVELOPMENT LLC			
WATER & SEWER AS-BUILTS PLAN ROMAN HEIGHTS SUBDIVISION PHASE 2 IN THE CITY OF BRYANT, SALINE COUNTY, ARKANSAS			
DATE:	09/23/2023	C.A.D. BY:	MD
REVISION:		CHECKED BY:	
500	01S	14W	0 10 300 62 1762
		SCALE:	1"=60'
		DRAWING NUMBER:	17-0077

P:\LAND PROJECTS\2024\176077 ROMAN HEIGHTS\DWG\176077 ROMAN HEIGHTS AS-BUILTS.PWG 08-28-2024