

NLC SALINE COUNTY PLAYGROUND IMPROVEMENTS

BRYANT, SALINE COUNTY, ARKANSAS

CONSTRUCTION PLANS

June 2022

HOLLOWAY ENGINEERING JOB NO. 2022-044



Holloway Engineering,
Surveying & Civil Design

200 Casey Drive
Maumelle, AR 72113
(501) 851-3366
www.holloway-eng.com

REV.	DATE	DESCRIPTION

LEGEND		
PROPOSED	DESCRIPTION	EXISTING
— W —	WATER LINE	— W —
— G —	GAS LINE	— G —
— SS —	SANITARY SEWER LINE	— SS —
— FO —	FIBER OPTIC LINE	— FO —
— C _u —	UNDERGROUND PHONE LINE	— C _u —
— OHE —	OVERHEAD ELECTRIC LINE	— OHE —
— E _u —	UNDERGROUND ELECTRIC LINE	— E _u —
— —	STORM DRAINAGE PIPE	— —
(X-X)	DRAINAGE STRUCTURE - NO.	(X-X)
— CTV —	CATV CABLE LINE	— CTV —
— X —	FENCE	— X —
— —	DITCH FLOW LINE	— —
⊕	CURB INLET/JUNCTION BOX	⊕
△	CONTROL POINT	△
⊗	GAS METER	⊗
⊗	GAS REGULATOR	⊗
⊗	WATER METER	⊗
⊗	WATER VALVE	⊗
⊗	FIRE HYDRANT	⊗
⊗	AIR RELEASE VALVE	⊗
⊗	GUY ANCHOR	⊗
⊗	UTILITY POLE	⊗
⊗	LIGHT POLE	⊗
⊗	ELECTRICAL BOX	⊗
⊗	SANITARY SEWER MANHOLE	⊗
⊗	SANITARY SEWER CLEAN-OUT	⊗
⊗	TELEPHONE PEDESTAL/RISER	⊗
⊗	SIGN	⊗



VICINITY MAP

Sheet List Table		
Sheet Number	Sheet Title	Sheet Number
C0.00	COVER SHEET	C0.00
C1.00	SITE PLAN	C1.00
C1.01	SITE DETAILS	C1.01
C2.00	GRADING & DRAINAGE	C2.00
C2.01	GRADING & DRAINAGE DETAILS	C2.01

NLC SALINE COUNTY
BRYANT, SALINE COUNTY, AR
FOR NLC SALINE
COVER SHEET

DRAFT
This document
is preliminary
in nature and
is not a final
signed and
sealed
document.

DATE	PLAN SET	SHEET NO.

OWNER/DEVELOPER
NEW LIFE CHURCH
4200 HWY 5 NORTH
BRYANT, AR 72022

ENGINEER/ SURVEYOR
HOLLOWAY ENGINEERING
200 CASEY DRIVE
MAUMELLE, AR 72113
(501) 851-3366

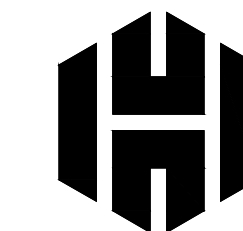


Know what's below.
Call before you dig.

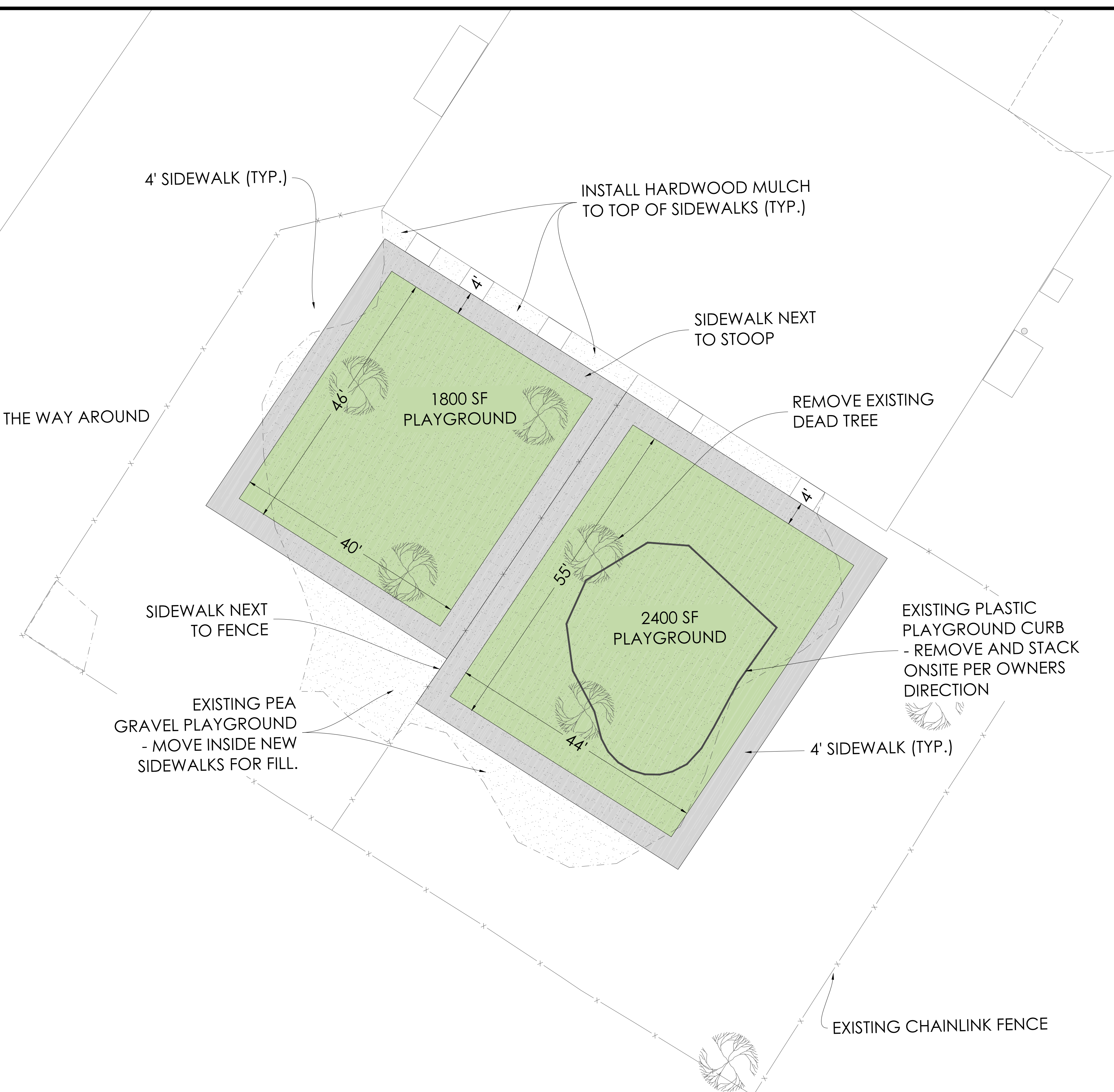
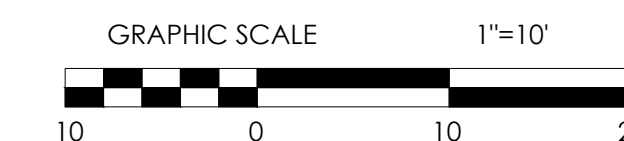
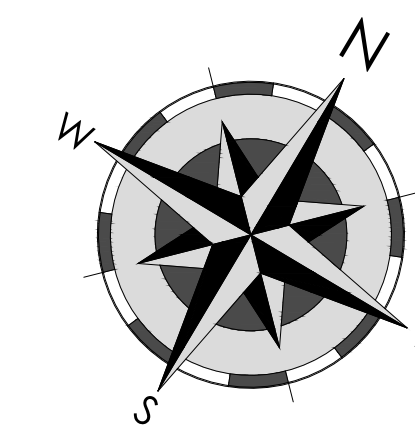
CAUTION: UNDERGROUND UTILITIES EXIST WITHIN AND ADJACENT TO THE LIMITS OF CONSTRUCTION AND AN ATTEMPT HAS BEEN MADE TO LOCATE THESE UTILITIES ON THE PLANS. HOWEVER, ALL EXISTING UTILITIES MAY NOT BE SHOWN AND THE ACTUAL LOCATIONS OF THE UTILITIES MAY VARY FROM THE LOCATIONS SHOWN. PRIOR TO BEGINNING ANY TYPE OF EXCAVATION, THE CONTRACTOR SHALL CONTACT THE UTILITIES INVOLVED AND MAKE ARRANGEMENTS FOR THE LOCATION OF THE UTILITIES ON THE GROUND. THE CONTRACTOR SHALL MAINTAIN THE UTILITY LOCATION MARKINGS UNTIL THEY ARE NO LONGER NECESSARY. ARKANSAS STATE LAW, THE UNDERGROUND FACILITIES DAMAGE PREVENTION ACT, REQUIRES TWO WORKING DAYS ADVANCE NOTIFICATION THROUGH THE ARKANSAS ONE-CALL SYSTEM CENTER BEFORE EXCAVATING USING MECHANIZED EQUIPMENT OR EXPLOSIVES (EXCEPT IN THE CASE OF AN EMERGENCY). THE ONE-CALL SYSTEM PHONE NUMBER IS 1-800-482-8998. THE CONTRACTOR IS ADVISED THAT THERE IS A SEVERE PENALTY FOR NOT MAKING THIS CALL. NOT ALL UTILITY COMPANIES ARE MEMBERS OF THE ARKANSAS ONE-CALL SYSTEM; THEREFORE, THE CONTRACTOR IS ADVISED TO CONTACT ALL NON-MEMBER UTILITIES, AS WELL AS THE ONE-CALL SYSTEM.

JOB NO.: 2022-044
DATE: 7/21/23
DRAWN BY: LCM
SHEET NUMBER:

C0.00



Holloway Engineering,
Surveying & Civil Design
200 Casey Drive
Maumelle, AR 72113
(501) 851-3366
www.holloway-eng.com



- GENERAL NOTES
1. LOCATIONS OF THE EXISTING UTILITIES ARE BASED ON RECORDS FROM SAID UTILITY COMPANIES AND ARE HORIZONTALLY FIELD LOCATED ONLY. THE CONTRACTORS SHALL BE RESPONSIBLE FOR DETERMINING ACTUAL LOCATION.
 2. CONTRACTOR TO UNCOVER AND MARK UTILITY LINES BEFORE CONSTRUCTION.
 3. CONTRACTOR SHALL BEAR ALL RESPONSIBILITY AND COST OF REPAIR OR REPLACEMENT OF EXISTING UTILITIES, DAMAGED OR INTERRUPTED AS A RESULT OF THIS CONSTRUCTION PROJECT.
 4. CONTRACTOR SHALL NOTIFY THE PROJECT ENGINEER AND THE OWNER OF ANY DAMAGED OR INTERRUPTED UTILITIES IMMEDIATELY.
 5. EXISTING UTILITIES TO REMAIN ARE TO BE ADJUSTED TO MATCH PROPOSED GRADE.
 6. CONTRACTOR SHALL NOTIFY PROJECT ENGINEER PRIOR TO BEGINNING WORK.
 7. CONTRACTOR WILL CONTROL AND PREVENT OFF-SITE TRACKING OF CONSTRUCTION RUNOFF AND SEDIMENT TO ADJACENT PROPERTY AND PUBLIC ROADS.
 8. CONTRACTOR IS TO PROTECT EXISTING STORM DRAINAGE SYSTEM ACCORDING TO PROTECTION ILLUSTRATIONS PROVIDED.
 9. CONTRACTOR TO CONFORM TO ALL CONSTRUCTION STORM WATER AND EROSION CONTROL PERMITTING REQUIREMENTS BY "EPA PHASE II STORM WATER REGULATIONS" AS ADMINISTERED BY THE ARKANSAS DEPARTMENT OF ENVIRONMENTAL QUALITY (ADEQ). WHERE PERMITTING IS REQUIRED, A COPY OF THE NOTICE OF INTENT SHALL BE PROVIDED TO THE LOCAL MUNICIPAL AUTHORITY.
 10. CONTRACTOR SHALL LOCATE ALL EXISTING UTILITIES IN ACCORDANCE WITH THE ARKANSAS UNDERGROUND FACILITIES DAMAGE PREVENTION ACT. THIS LAW REQUIRES THAT THE CONTRACTOR MAKE A TELEPHONE CALL TO THE ARKANSAS ONE-CALL SYSTEM AT 1-800-482-8998 AT LEAST TWO WORKING DAYS PRIOR TO EXCAVATION TO ENSURE THAT ANY EXISTING UTILITIES CAN BE LOCATED.

REV.	DATE	DESCRIPTION

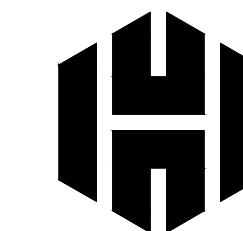
NLC SALINE COUNTY
BRYANT, SALINE COUNTY, AR
FOR NLC SALINE

SITE PLAN

DRAFT
This document is preliminary in nature and is not a final signed and sealed document.

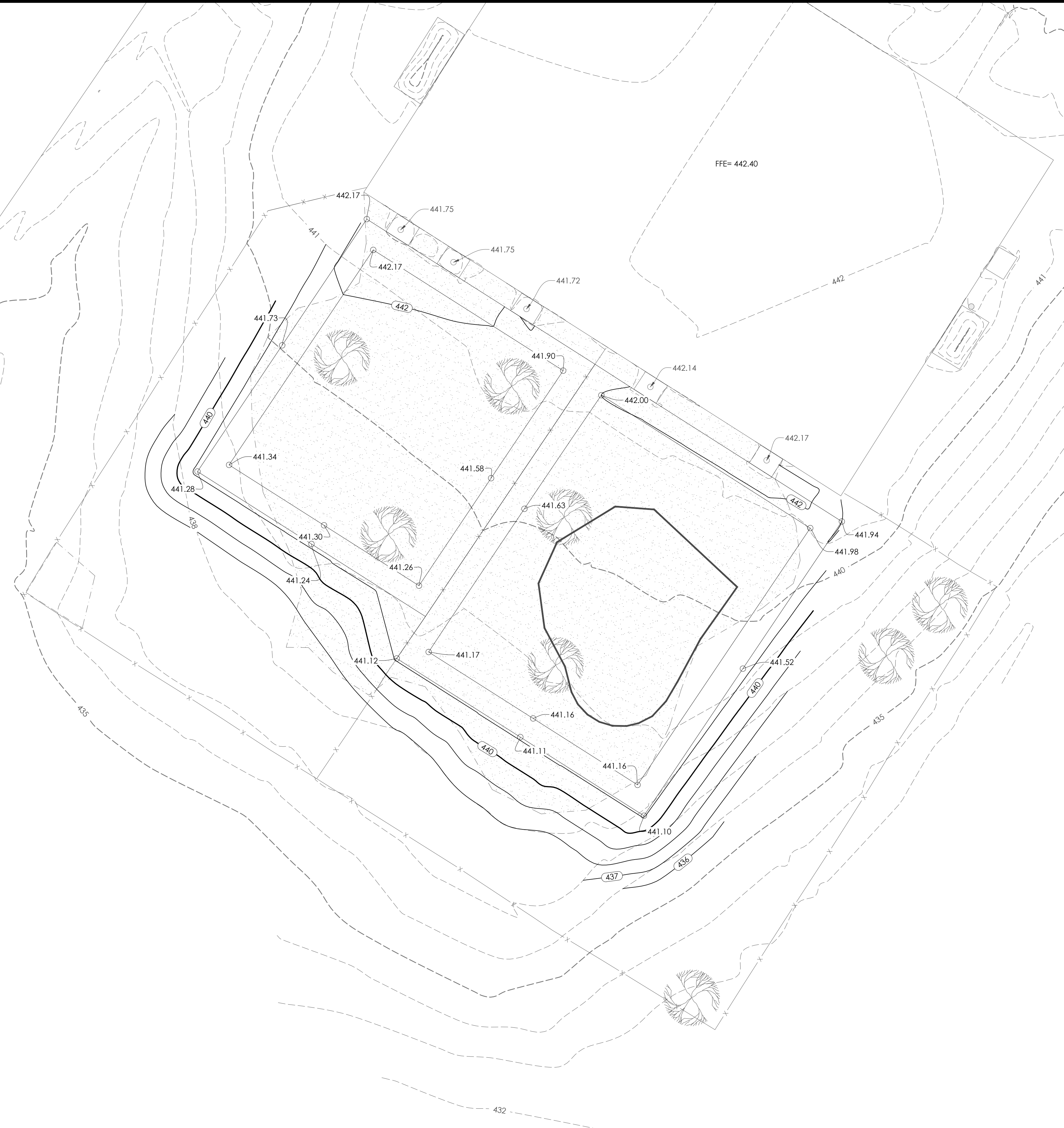
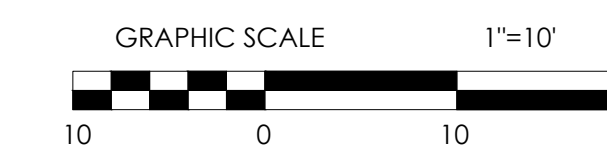
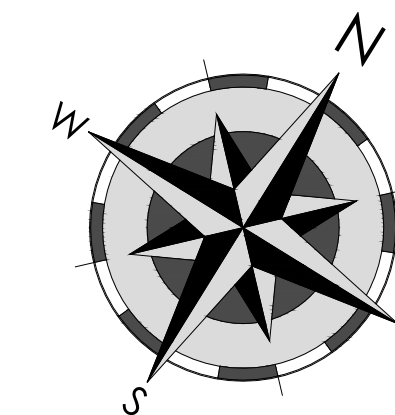
JOB NO.: 2022-044
DATE: 7/21/23
DRAWN BY: LCM
SHEET NUMBER:

C1.00



Holloway Engineering,
Surveying & Civil Design

200 Casey Drive
Maumelle, AR 72113
(501) 851-3366
www.holloway-eng.com



NOTES:

1. CONTRACTOR TO NOTIFY "ARKANSAS ONE-CALL" AND ALL APPROPRIATE UTILITIES, CABLE COMPANIES, ETC., PRIOR TO STARTING ANY EXCAVATION, DIAL 811
2. VEGETATION MUST BE ESTABLISHED ON DISTURBED AREAS WITHIN 14 DAYS OF COMPLETION OF GRADING ACTIVITIES.
3. ADEQ STORMWATER PERMIT MUST BE OBTAINED AND EROSION CONTROL MEASURES MUST BE INSTALLED TO COMPLY WITH ALL STORMWATER RUNOFF REGULATIONS.
4. ALL SIDEWALK AREAS TO MAINTAIN A MAXIMUM 2% CROSS SLOPE AND A 5% RUNNING SLOPE & CONFORM TO ALL ADA REGULATIONS, ALL ADA PARKING TO BE MAX. 2% SLOPE ALL DIRECTIONS.
5. THE LOCATION OF ANY UTILITIES SHOWN IS ONLY APPROXIMATE OR PROPOSED. THERE MAY EXIST MORE UTILITIES THAN THOSE SHOWN.
6. ALL DRAINAGE PIPE SHALL BE INSTALLED PER MANUFACTURERS RECOMMENDATIONS.
7. CONTRACTOR TO ADJUST ALL VALVE BOXES, COVERS, PULL BOXES TO FINISH GRADE.

REV.	DATE	DESCRIPTION

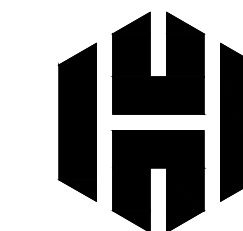
NLC SALINE COUNTY
BRYANT, SALINE COUNTY, AR
FOR NLC SALINE

GRADING & DRAINAGE

DRAFT
This document is preliminary in nature and is not a final signed and sealed document.

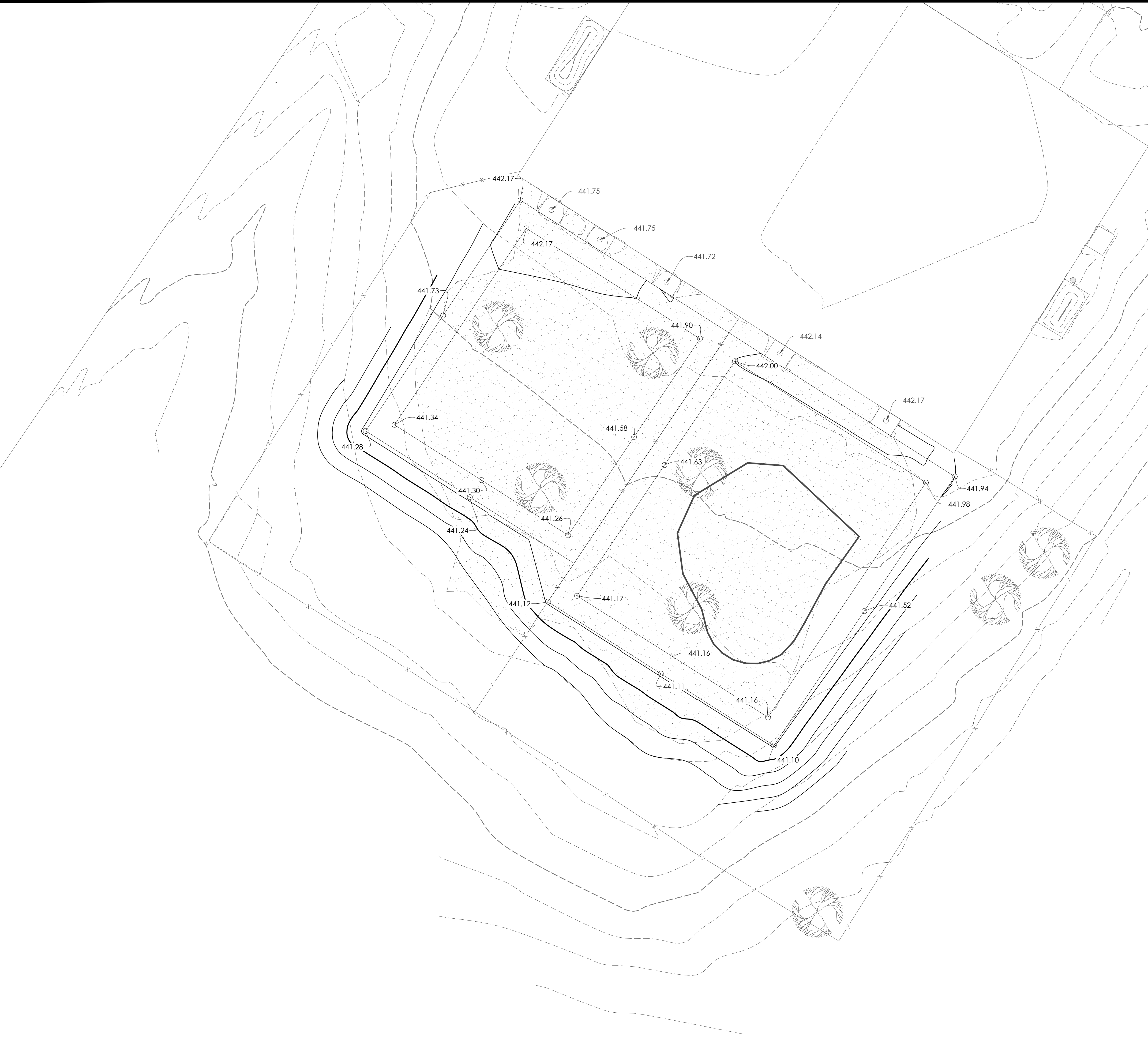
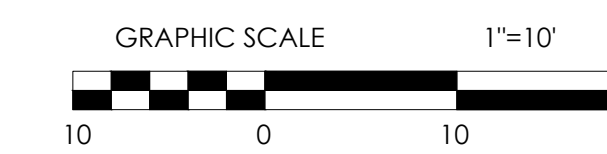
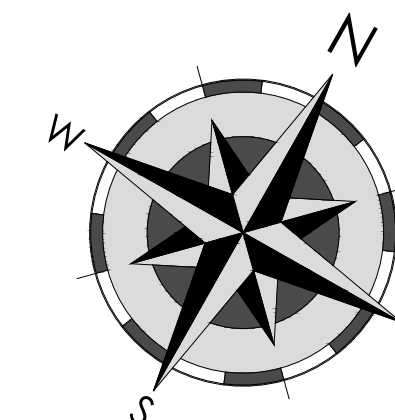
JOB NO.: 2022-044
DATE: 7/21/23
DRAWN BY: LCM
SHEET NUMBER:

C2.00



Holloway Engineering,
Surveying & Civil Design

200 Casey Drive
Maumelle, AR 72113
(501) 851-3366
www.holloway-eng.com



EROSION CONTROL LEGEND	
SYMBOL	DESCRIPTION
	ROCK DITCH CHECK
	SILT FENCE
	CENTER DITCH & FLOW DIRECTION
	VEHICULAR TRACKING PAD (CONSTRUCTION ENTRANCE)
	INLET PROTECTION
	TEMPORARY PARKING & STORAGE
	OUTLET PROTECTION RIPRAP PAD

EROSION CONTROL NOTES:

1. THE CONTRACTOR IS RESPONSIBLE FOR THE PROPER CONSTRUCTION OF ALL EROSION CONTROL DEVICES AS SHOWN ON THIS SHEET, AND DESCRIBED IN THE SPECIFICATIONS. ADDITIONAL EROSION CONTROL AND/OR ADJUSTMENT OF LOCATIONS FOR EROSION CONTROL MAY BE REQUIRED.
2. CONTRACTOR AT HIS EXPENSE SHALL MEET ALL REQUIREMENTS OF ARKANSAS DEPARTMENT OF ENVIRONMENTAL QUALITY, INCLUDING, BUT NOT LIMITED TO, BEST MANAGEMENT PRACTICES, A STORM WATER POLLUTION PREVENTION PLAN, A FILING OF A NOTICE OF INTENT IN THE OWNER'S NAME, AND FILING A NOTICE OF TERMINATION AT THE END OF PROJECT.
3. SILT FENCES SHALL BE CONSTRUCTED PER MANUFACTURER RECOMMENDATIONS.
4. EACH CONTRACTOR SHALL BE RESPONSIBLE FOR MAINTAINING ALL EROSION CONTROL DEVICES ALREADY IN PLACE. CONTRACTOR SHALL REMOVE AND REPLACE EROSION CONTROL AS NEEDED FOR CONSTRUCTION OR ACCESS. ALL EROSION CONTROL MUST BE IN PLACE AT ALL TIMES DURING CONSTRUCTION.
5. IT SHALL BE THE CONTRACTOR'S RESPONSIBILITY TO USE WHATEVER MEANS NECESSARY TO CONTROL AND LIMIT SILT AND SEDIMENT LEAVING THE SITE. SPECIFICALLY, THE CONTRACTOR SHALL PROTECT ALL PUBLIC STREETS, ALLEYS, STREAMS, CREEKS, STORM DRAIN SYSTEMS AND INLETS FROM EROSION DEPOSITS.
6. ALL DISTURBED SOIL SHALL BE PERMANENTLY SODDED/SEEDED.
7. IN ORDER TO ALLEVIATE DUST CONDITIONS WITHIN THE CITY LIMITS DURING GRADING OPERATIONS, AND AFTER GRADING OPERATIONS ARE COMPLETED, BUT BEFORE PAVEMENT AND/OR PERMANENT EROSION CONTROL WORK IS STARTED, THE CONTRACTOR SHALL SPRINKLE GRADING AT INTERVALS APPROVED BY THE CITY.
8. CONTRACTOR SHALL CONSTRUCT AT LEAST ONE VEHICULAR TRACKING PAD, TWO IS OPTIONAL.

REV.	DATE	DESCRIPTION

NLC SALINE COUNTY
BRYANT, SALINE COUNTY, AR
FOR NLC SALINE

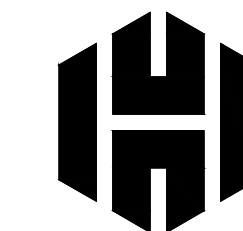
SWPPP-EROSION CONTROL PLAN

DRAFT

This document is preliminary in nature and is not a final signed and sealed document.

JOB NO.: 2022-044
DATE: 7/21/23
DRAWN BY: TJH
SHEET NUMBER:

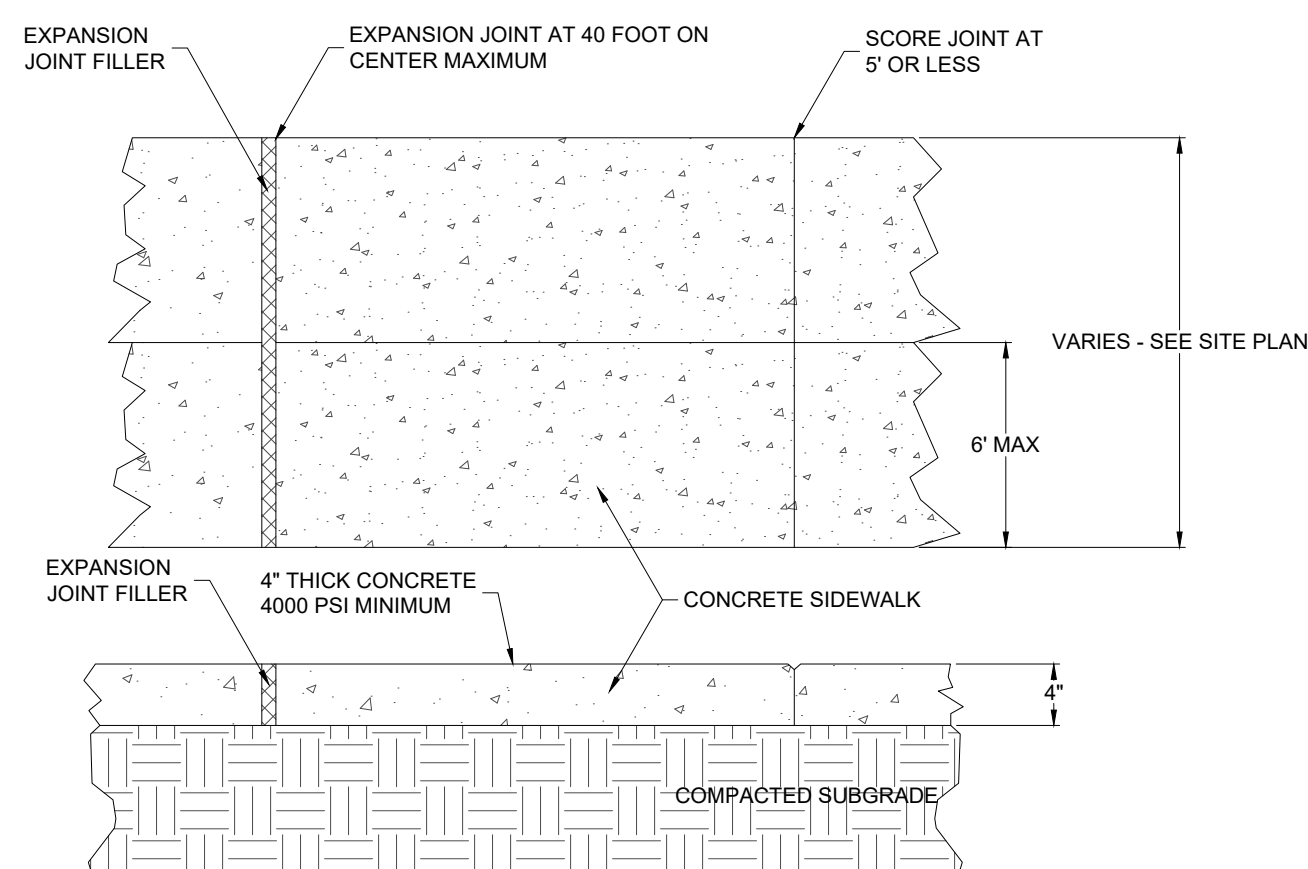
C3.00



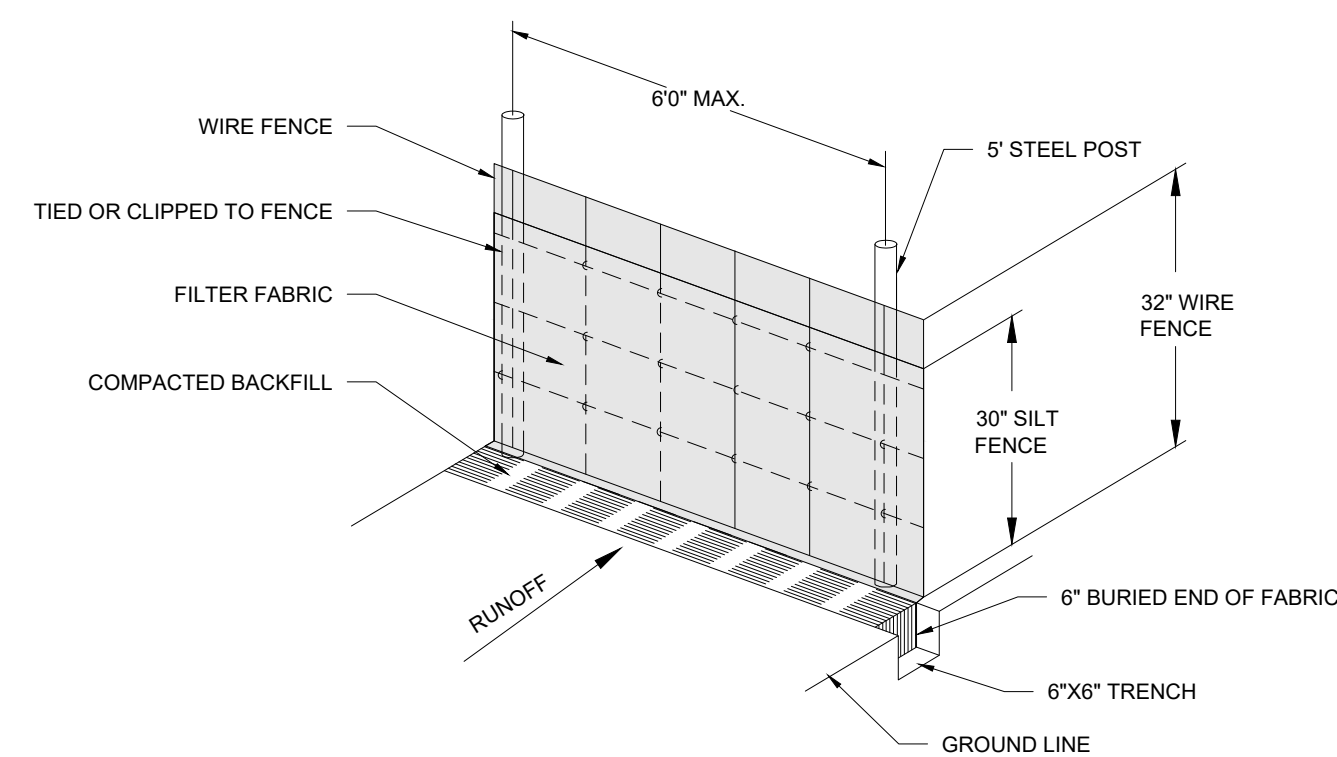
Holloway Engineering,
Surveying & Civil Design

200 Casey Drive
Maumelle, AR 72113
(501) 851-3366
www.holloway-eng.com

REV.	DATE	DESCRIPTION



1 CONCRETE SIDEWALK - VARIED WIDTH
NOT TO SCALE



SILT FENCE NOTES

1. POSTS WHICH SUPPORT THE SILT FENCE SHALL BE INSTALLED ON A SLIGHT ANGLE TOWARD THE ANTICIPATED RUNOFF SOURCE. POST MUST BE EMBEDDED A MINIMUM OF ONE FOOT.
2. THE TOE OF THE SILT FENCE SHALL BE TRENCHED IN WITH A SPADE OR MECHANICAL TRENCHER, SO THAT THE DOWNSLOPE FACE OF THE TRENCH IS FLAT AND PERPENDICULAR TO THE LINE OF FLOW. WHERE FENCE CANNOT BE TRENCHED IN (e.g. PAVEMENT), WEIGHT FABRIC FLAP WITH ROCK ON UPHILL SIDE TO PREVENT FLOW FROM SEEPING UNDER FENCE.
3. THE TRENCH MUST BE A MINIMUM OF 6 INCHES DEEP AND 6 INCHES WIDE TO ALLOW FOR THE SILT FENCE FABRIC TO BE LAID IN THE GROUND AND BACKFILLED WITH COMPACTED MATERIAL.
4. SILT FENCE SHOULD BE SECURELY FASTENED TO EACH SUPPORT POST OR TO WOVEN WIRE, WHICH IN TURN IS ATTACHED TO THE FENCE POST. THERE SHALL BE A 3 FOOT OVERLAP, SECURELY FASTENED WHERE ENDS OF FABRIC MEET.
5. REPAIR OF REPLACEMENT SHALL BE MADE PROMPTLY AS NEEDED.
6. SILT FENCE SHALL BE REMOVED WHEN THE SITE IS COMPLETELY STABILIZED SO AS NOT TO BLOCK OR IMPEDE STORM FLOW OR DRAINAGE.
7. ACCUMULATED SILT SHALL BE REMOVED WHEN IT REACHES A DEPTH OF HALF THE HEIGHT OF THE FENCE. THE SILT SHALL BE DISPOSED OF AT AN APPROVED SITE AND IN SUCH A MANNER AS TO NOT CONTRIBUTE TO ADDITIONAL SILTATION.

E-2 WIRE REINFORCED SILT FENCE
N.T.S.

NLC SALINE COUNTY
BRYANT, SALINE COUNTY, AR
FOR NLC SALINE

DETAILS

DRAFT
This document
is preliminary
in nature and
is not a final
signed and
sealed
document.

JOB NO.: 2022-044
DATE: 7/21/23
DRAWN BY: LCM
SHEET NUMBER:

C4.00