

ZUBER RD

S88°1

N89°21'27"E 214.55'

50

R

R.O.W.



Proposed Connection



Proposed Connection

F

SET
COTTON
PICKER
SPINDLE

N00°32'27"E
CH=120.03'
R=466.95'
L=120.36'

SAMPLES RD



4" Forced sewer pipe sleeved in larger pipe.



N17°39'22"E
CH=92.18'
R=222.47'
L=92.85'

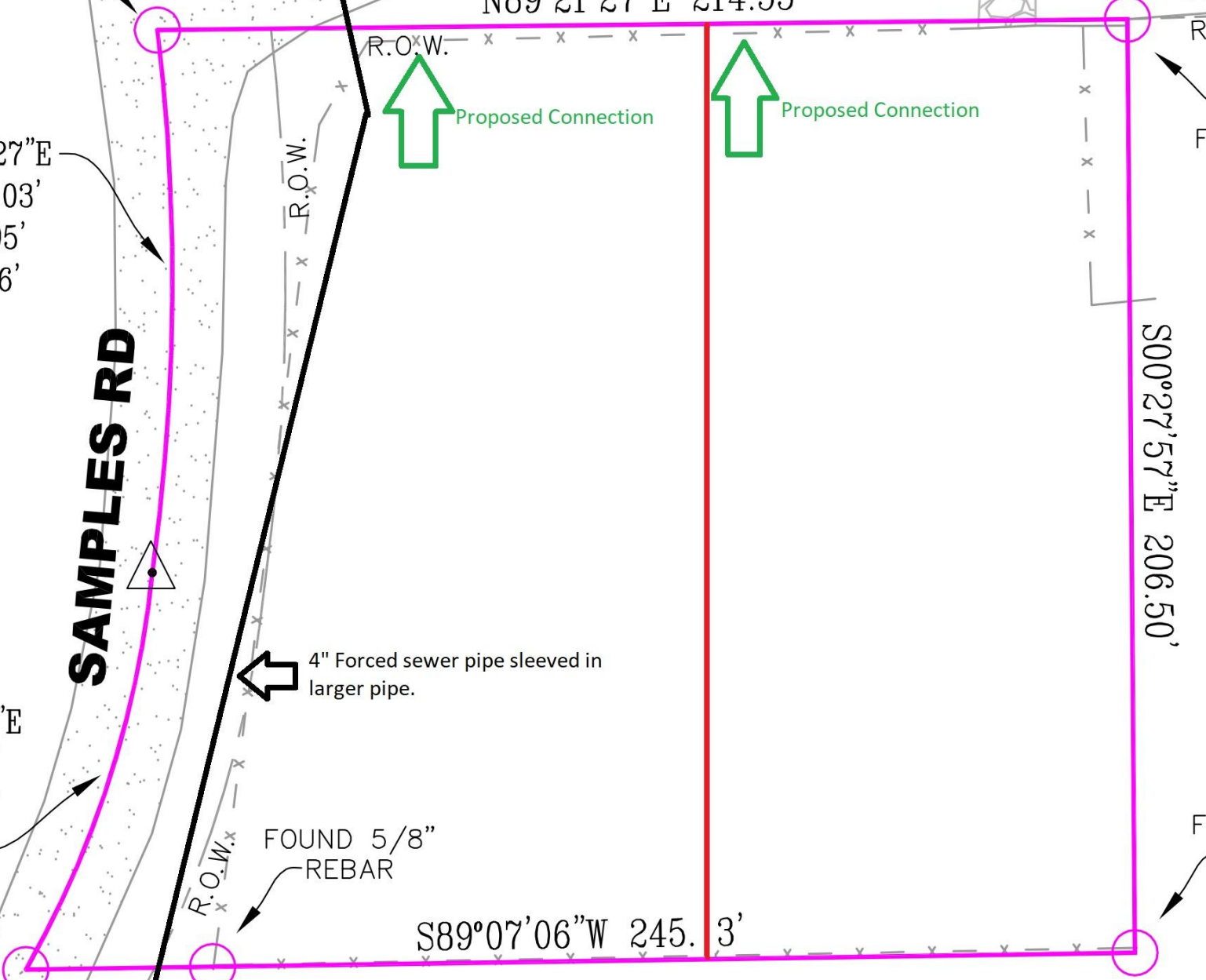
FOUND 5/8"
REBAR



S89°07'06"W 245.3'

F

S00°27'57"E 206.50'



SET
COTTON
PICKER
SPINDLE

ZUBER RD

S88°1

N89°21'27"E 214.55'

50

N00°32'27"E
CH=120.03'
R=466.95'
L=120.36'

SAMPLES RD

R.O.W.

R.O.W.

R.O.W.

S00°27'57"E 206.50'

4" Forced sewer pipe sleeved in larger pipe.

Proposed Connection

Proposed Connection

N17°39'22"E
CH=92.18'
R=222.47'
L=92.85'

S89°07'06"W 245.33'