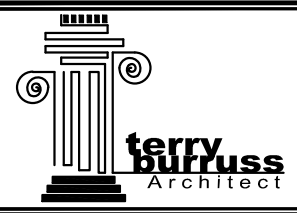


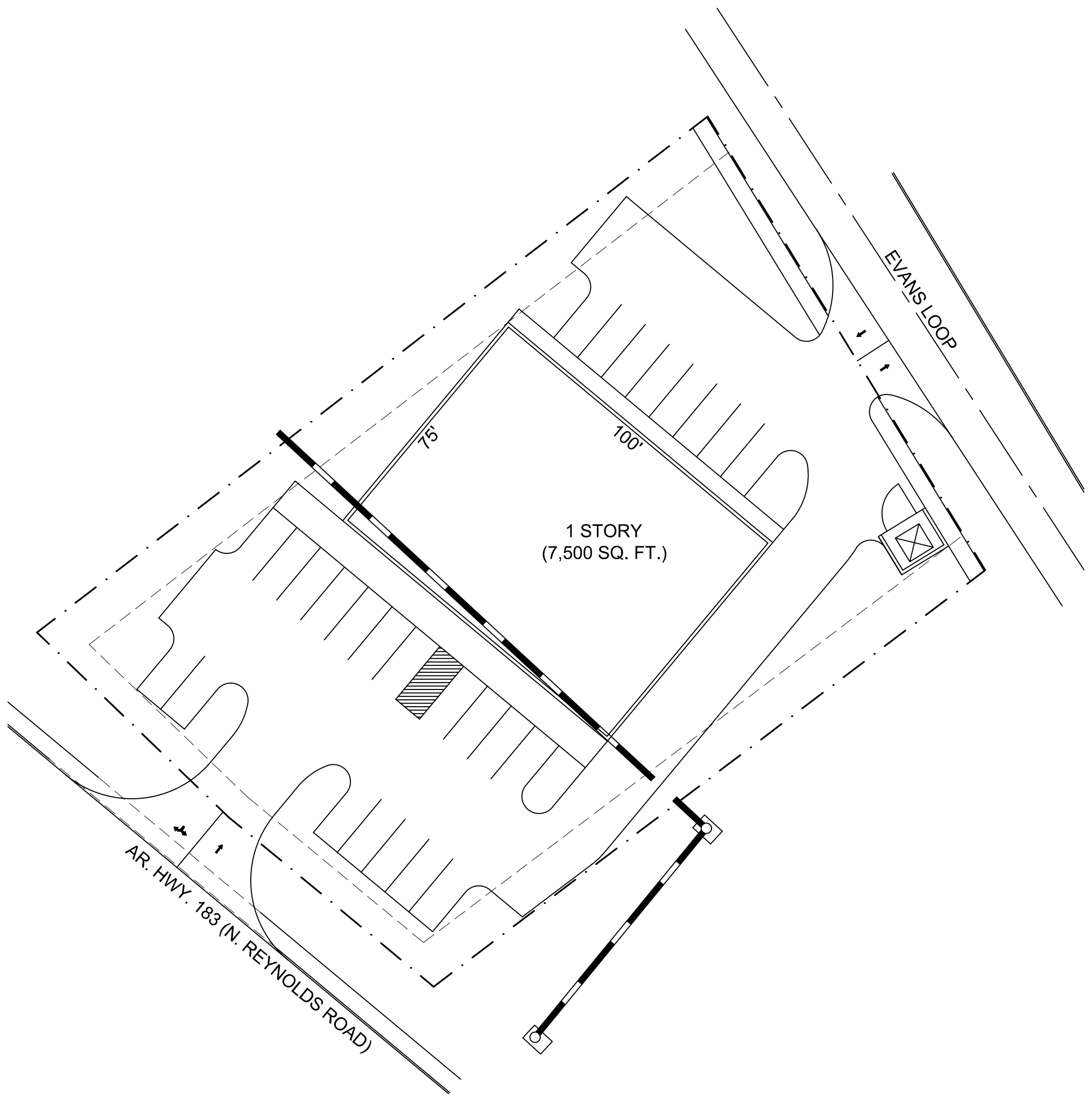
04/28/2022
A/E # 2215



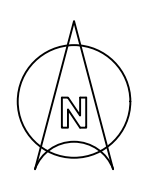
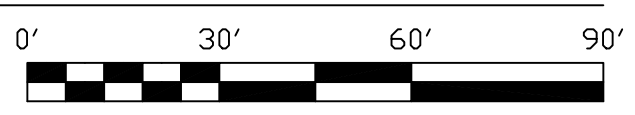
11912 KANIS ROAD, SUITE F-8
LITTLE ROCK, ARKANSAS 72211
501-376-3676 FAX 376-3766
design, planning and interiors

PRELIMINARY SITE PLAN FOR:
ABBY ROAD
1812 N. REYNOLDS ROAD
BRYANT, AR

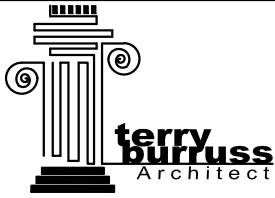
2
OF
5



SCHEME #2 ARCHITECTURAL SITE PLAN _____ SCALE: 1" = 30'-0"



04/28/2022
A/E # 2215

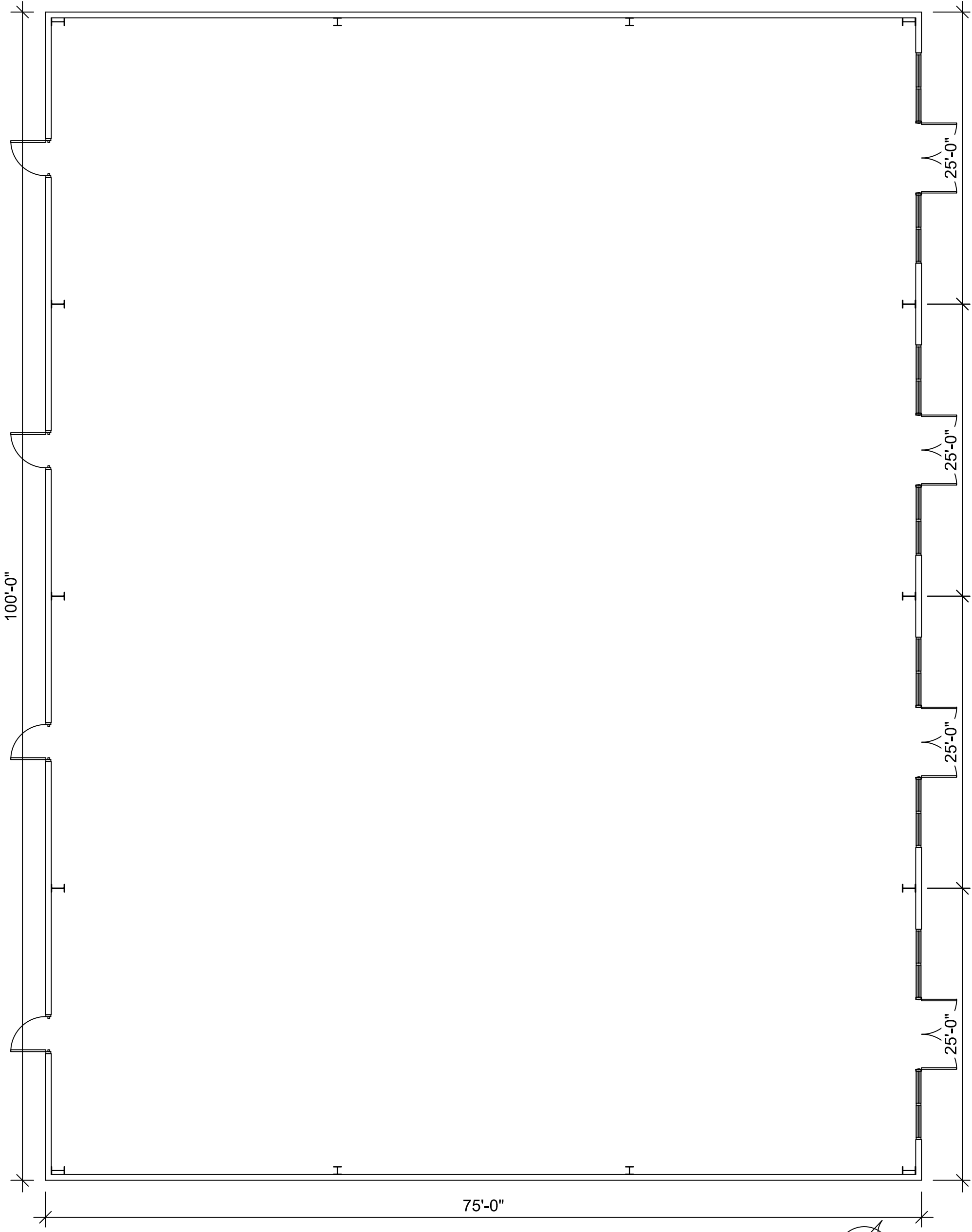


11912 KANIS ROAD, SUITE F-8
LITTLE ROCK, ARKANSAS 72211
501-376-3676 FAX 376-3766

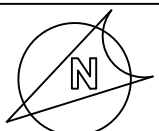
design, planning and interiors

PRELIMINARY SITE PLAN FOR:
ABBY ROAD
1812 N. REYNOLDS ROAD
BRYANT, AR

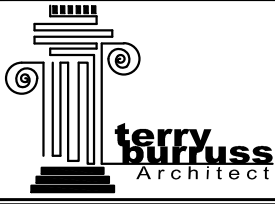
3
OF
5



PRELIMINARY FLOOR PLAN _____ SCALE: 1/8" = 1'-0"



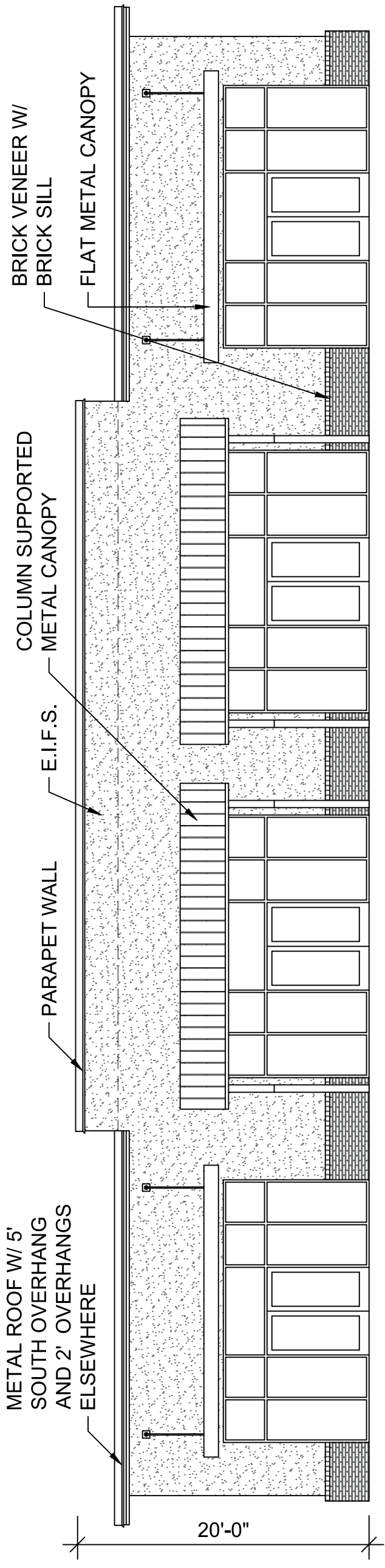
04/28/2022
A/E # 2215



11912 KANIS ROAD, SUITE F-8
LITTLE ROCK, ARKANSAS 72211
501-376-3676 FAX 376-3766

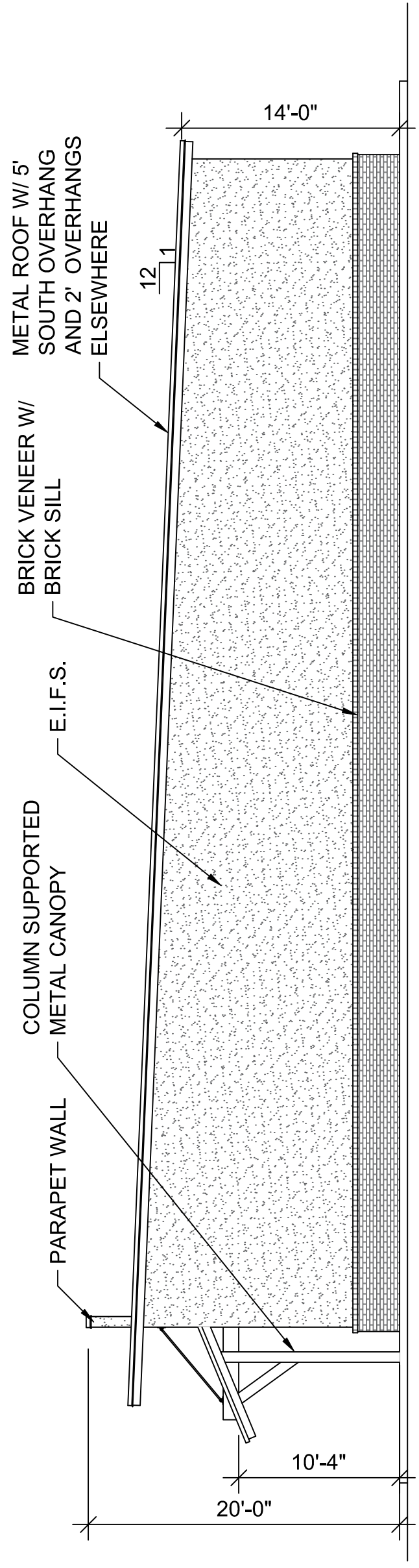
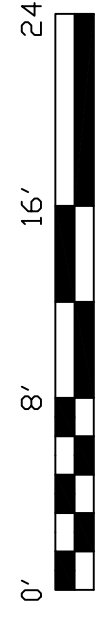
design, planning and interiors

PRELIMINARY SITE PLAN FOR:
ABBY ROAD
1812 N. REYNOLDS ROAD
BRYANT, AR



SCHEME # A SOUTH ELEVATION

SCALE: 1/8" = 1'-0"



SCHEME # A EAST ELEVATION

SCALE: 1/8" = 1'-0"

