

NORTH



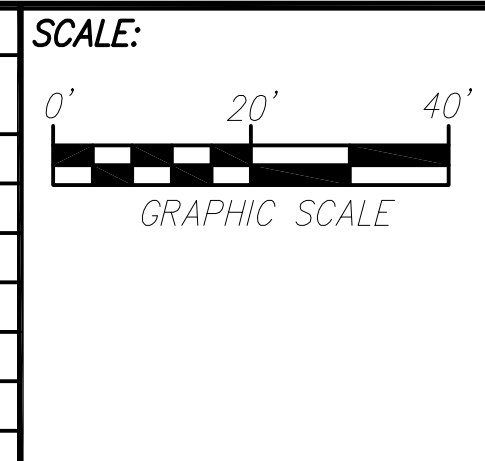
D  
C  
B  
A

XXX###XXX.DWG

APPROVED BY:		
TITLE	SIGNATURE	DATE
TITLE	SIGNATURE	DATE
TITLE	SIGNATURE	DATE

DESIGNED BY:	XYZ
DRAWN BY:	XYZ
CHECKED BY:	XYZ

REV	DESCRIPTION	BY	DATE
A	MOVED X	JSD	01/01/17



LOCATION:

ALCOA 40 PARK  
1180 SHOBE ROAD  
BRYANT, ARKANSAS  
72022

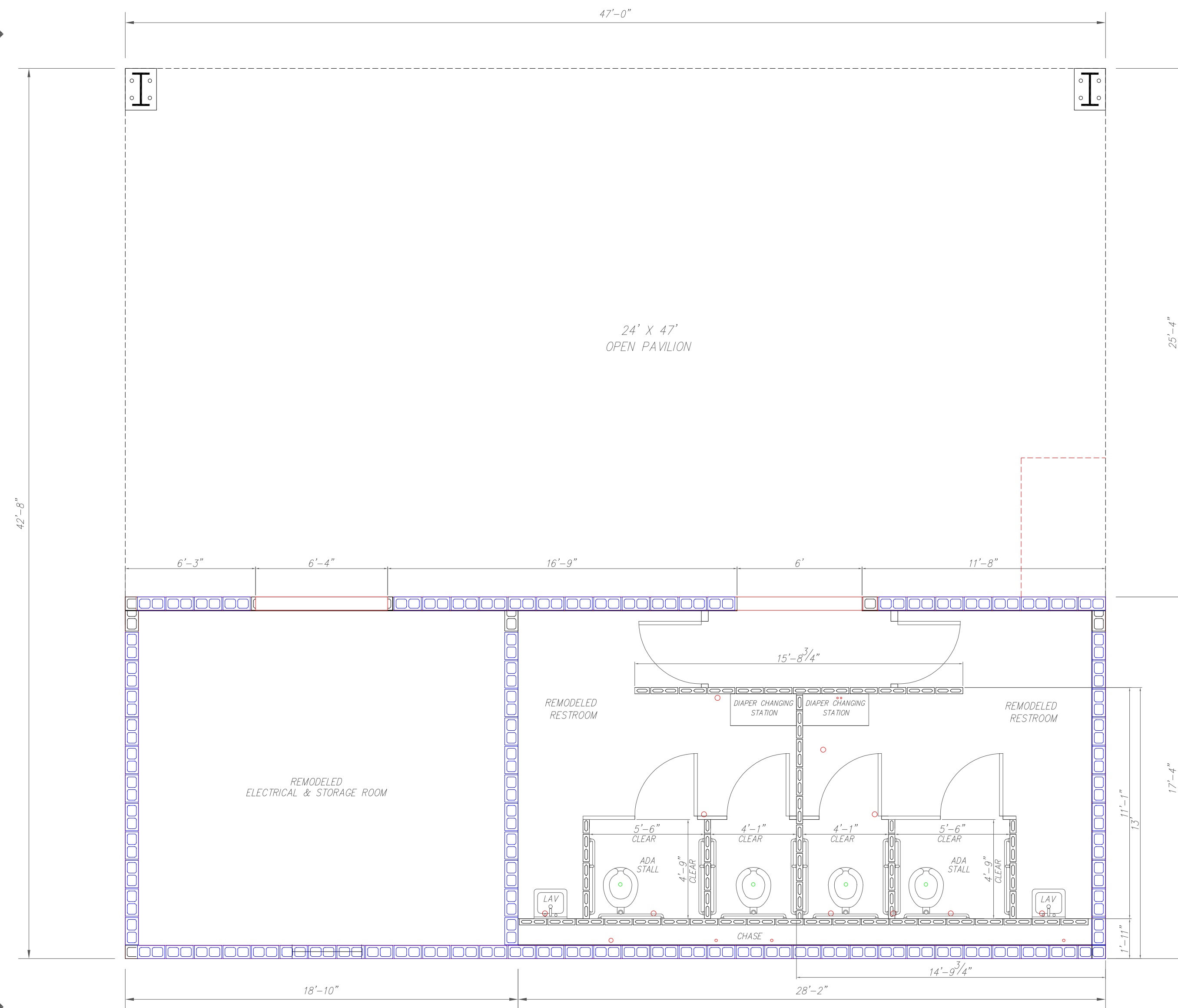
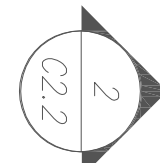


DWG. TITLE:

ALCOA 40 PARK  
REMODELED STRUCTURE  
GENERAL ARRANGEMENT  
SITE PLAN

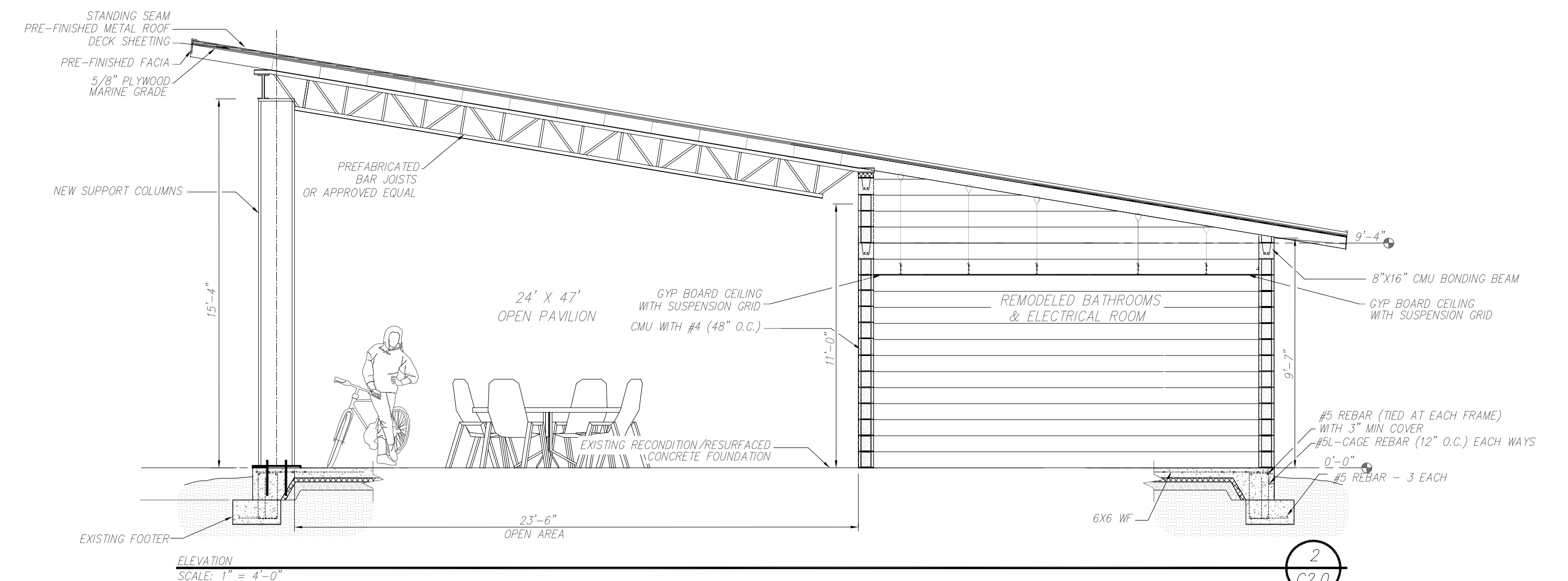
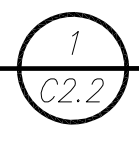
REVISION NO./DATE:	A - 11/15/19
PROJECT NO.:	
SHEET NO.:	C2.1

NORTH



REMODELED BATHROOM AND PAVILION - FLOOR PLAN

SCALE: 1" = 4'-0"



ELEVATION  
SCALE: 1" = 4'-0"



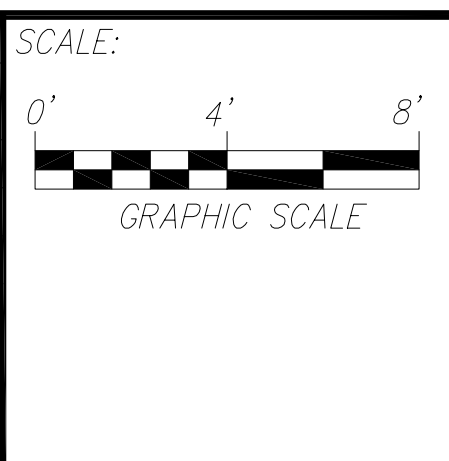
D  
C  
B  
A

XXX###XXX.DWG

APPROVED BY:		
TITLE	SIGNATURE	DATE
TITLE	SIGNATURE	DATE
TITLE	SIGNATURE	DATE

DESIGNED BY: XYZ
DRAWN BY: XYZ
CHECKED BY: XYZ

REV	DESCRIPTION	BY	DATE
A	MOVED X	JSD	01/01/17

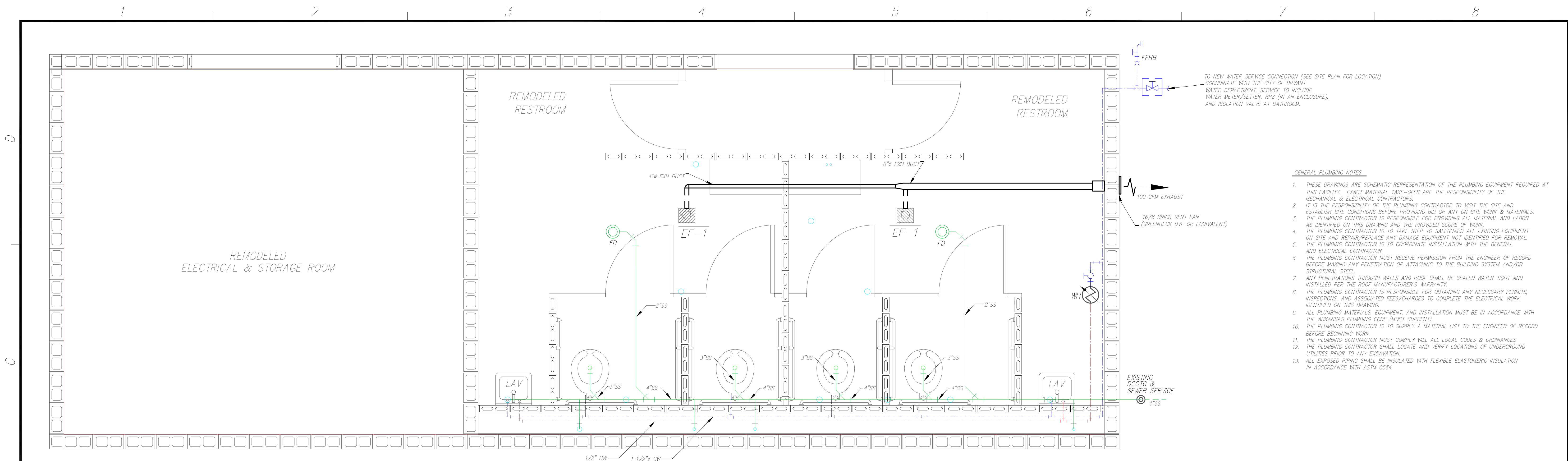


LOCATION:  
ALCOA 40 PARK  
1180 SHOBE ROAD  
BRYANT, ARKANSAS  
72022



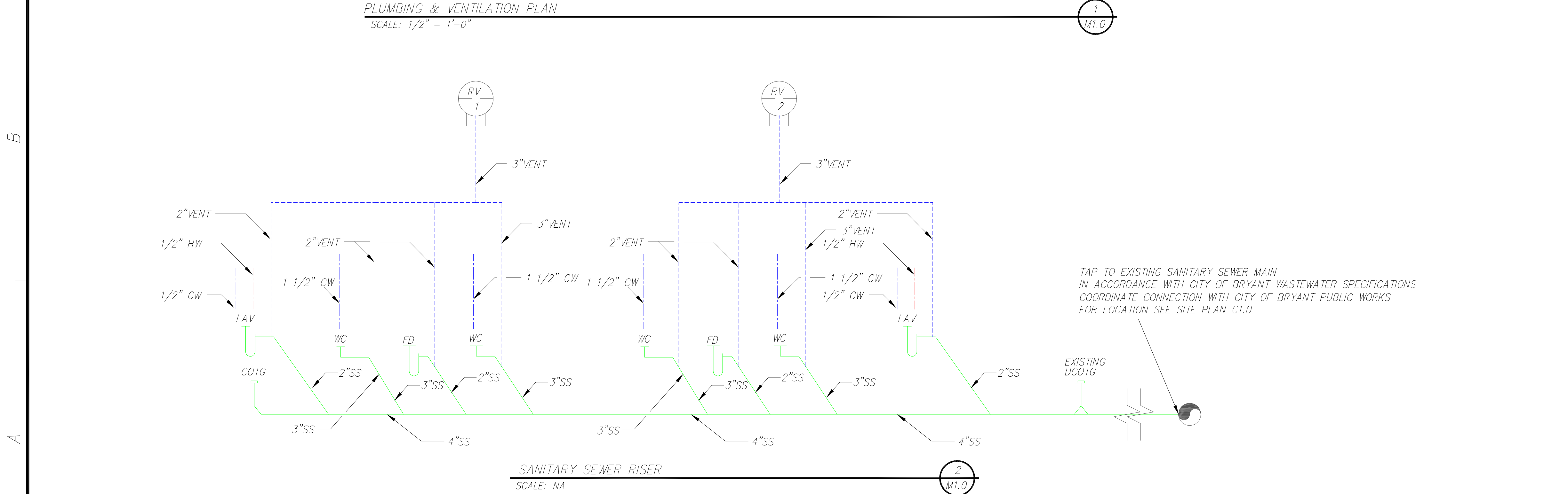
DWG. TITLE:  
ALCOA 40 PARK  
REMODELED STRUCTURE  
GENERAL ARRANGEMENT  
PLAN VIEW & DETAILS  
FLOOR PLAN

REVISION NO./DATE: A - 11/15/19
PROJECT NO.:
SHEET NO.:
C2.2



- GENERAL PLUMBING NOTES**
1. THESE DRAWINGS ARE SCHEMATIC REPRESENTATION OF THE PLUMBING EQUIPMENT REQUIRED AT THIS FACILITY. EXACT MATERIAL TAKE-OFFS ARE THE RESPONSIBILITY OF THE MECHANICAL & ELECTRICAL CONTRACTORS.
  2. IT IS THE RESPONSIBILITY OF THE PLUMBING CONTRACTOR TO VISIT THE SITE AND ESTABLISH SITE CONDITIONS BEFORE PROVIDING BID OR ANY ON SITE WORK & MATERIALS.
  3. THE PLUMBING CONTRACTOR IS RESPONSIBLE FOR PROVIDING ALL MATERIAL AND LABOR AS IDENTIFIED ON THIS DRAWING AND THE PROVIDED SCOPE OF WORK.
  4. THE PLUMBING CONTRACTOR IS TO TAKE STEP TO SAFEGUARD ALL EXISTING EQUIPMENT ON SITE AND REPAIR/REPLACE ANY DAMAGE EQUIPMENT NOT IDENTIFIED FOR REMOVAL.
  5. THE PLUMBING CONTRACTOR IS TO COORDINATE INSTALLATION WITH THE GENERAL AND ELECTRICAL CONTRACTOR.
  6. THE PLUMBING CONTRACTOR MUST RECEIVE PERMISSION FROM THE ENGINEER OF RECORD BEFORE MAKING ANY PENETRATION OR ATTACHING TO THE BUILDING SYSTEM AND/OR STRUCTURAL STEEL.
  7. ANY PENETRATIONS THROUGH WALLS AND ROOF SHALL BE SEALED WATER TIGHT AND INSTALLED PER THE ROOF MANUFACTURER'S WARRANTY.
  8. THE PLUMBING CONTRACTOR IS RESPONSIBLE FOR OBTAINING ANY NECESSARY PERMITS, INSPECTIONS, AND ASSOCIATED FEES/CHARGES TO COMPLETE THE ELECTRICAL WORK IDENTIFIED ON THIS DRAWING.
  9. ALL PLUMBING MATERIALS, EQUIPMENT, AND INSTALLATION MUST BE IN ACCORDANCE WITH THE ARKANSAS PLUMBING CODE (MOST CURRENT).
  10. THE PLUMBING CONTRACTOR IS TO SUPPLY A MATERIAL LIST TO THE ENGINEER OF RECORD BEFORE BEGINNING WORK.
  11. THE PLUMBING CONTRACTOR MUST COMPLY WITH ALL LOCAL CODES & ORDINANCES.
  12. THE PLUMBING CONTRACTOR SHALL LOCATE AND VERIFY LOCATIONS OF UNDERGROUND UTILITIES PRIOR TO ANY EXCAVATION.
  13. ALL EXPOSED PIPING SHALL BE INSULATED WITH FLEXIBLE ELASTOMERIC INSULATION IN ACCORDANCE WITH ASTM C534.

**PLUMBING & VENTILATION PLAN**  
SCALE: 1/2" = 1'-0"



**PLUMBING LEGEND**

	DOMESTIC COLD WATER		WC	WATER CLOSET (SEE SPECIFICATIONS)
	DOMESTIC HOT WATER		VENTILATION FAN W/16-8 BRICK VENT FAN (GREENHECK BVF) COORDINATE WITH ELECTRICAL CONTRACTOR	
	SANITARY SEWER		COTG	CLEAN OUT TO GRADE
	VENT LINE		DCOTG	DOUBLE CLEAN OUT TO GRADE
	BALL VALVE		CW	DOMESTIC COLD WATER
	ISOLATION VALVE IN A BURIED VAULT		HW	DOMESTIC HOT WATER
	FFHB		WH	WATER HEATER (SEE SPECIFICATION)
	ROOF VENT WITH FLASHING			
	FD			
	LAV			LAVATORY (SEE SPECIFICATION)

APPROVED BY:

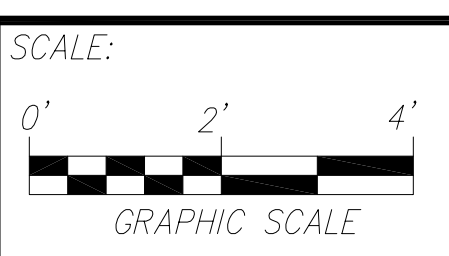
TITLE	SIGNATURE	DATE
TITLE	SIGNATURE	DATE
TITLE	SIGNATURE	DATE

DESIGNED BY: XYZ

DRAWN BY: XYZ

CHECKED BY: XYZ

REV	DESCRIPTION	BY	DATE
A	ISSUED FOR BIDS	JSD	01/01/20



LOCATION:

ALCOA 40 PARK  
1180 SHOBE ROAD  
BRYANT, ARKANSAS  
72022



DWG. TITLE:

ALCOA 40 PARK  
BATHROOM  
PLUMBING  
PLAN & RISER SCHEMATIC

REVISION NO./DATE:

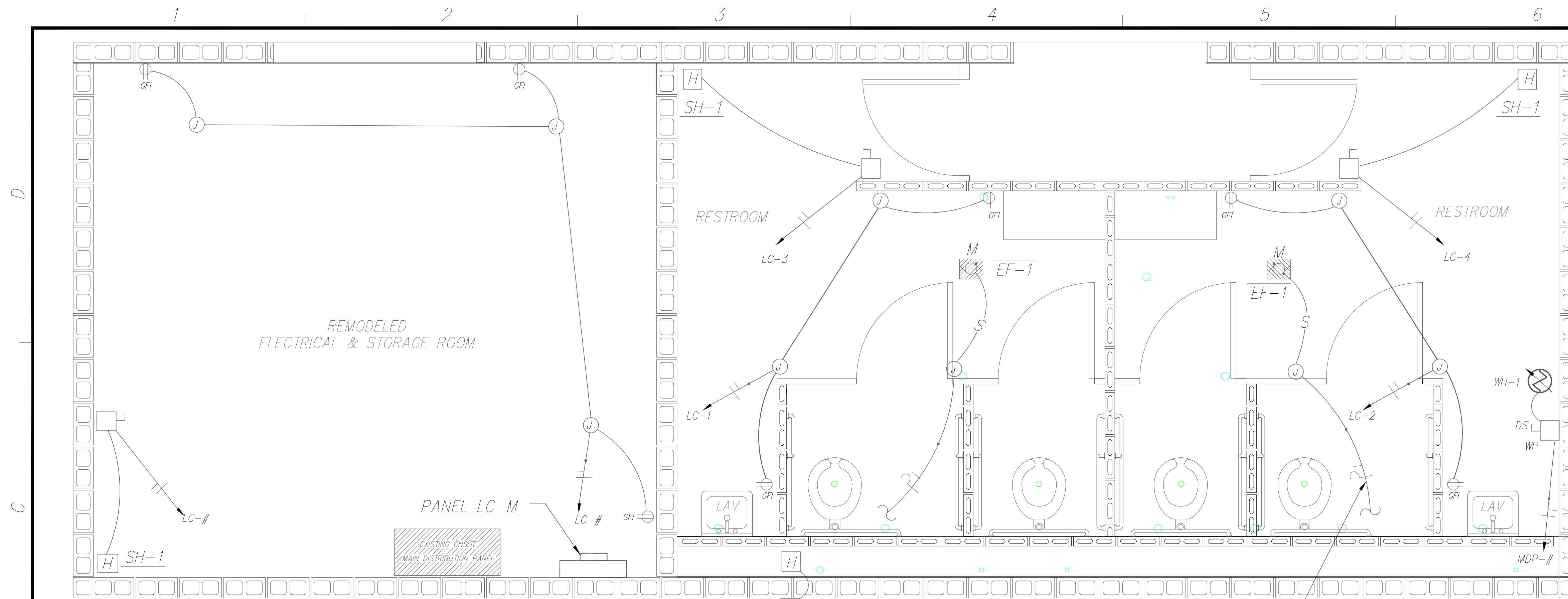
B - 6/28/22

PROJECT NO.:

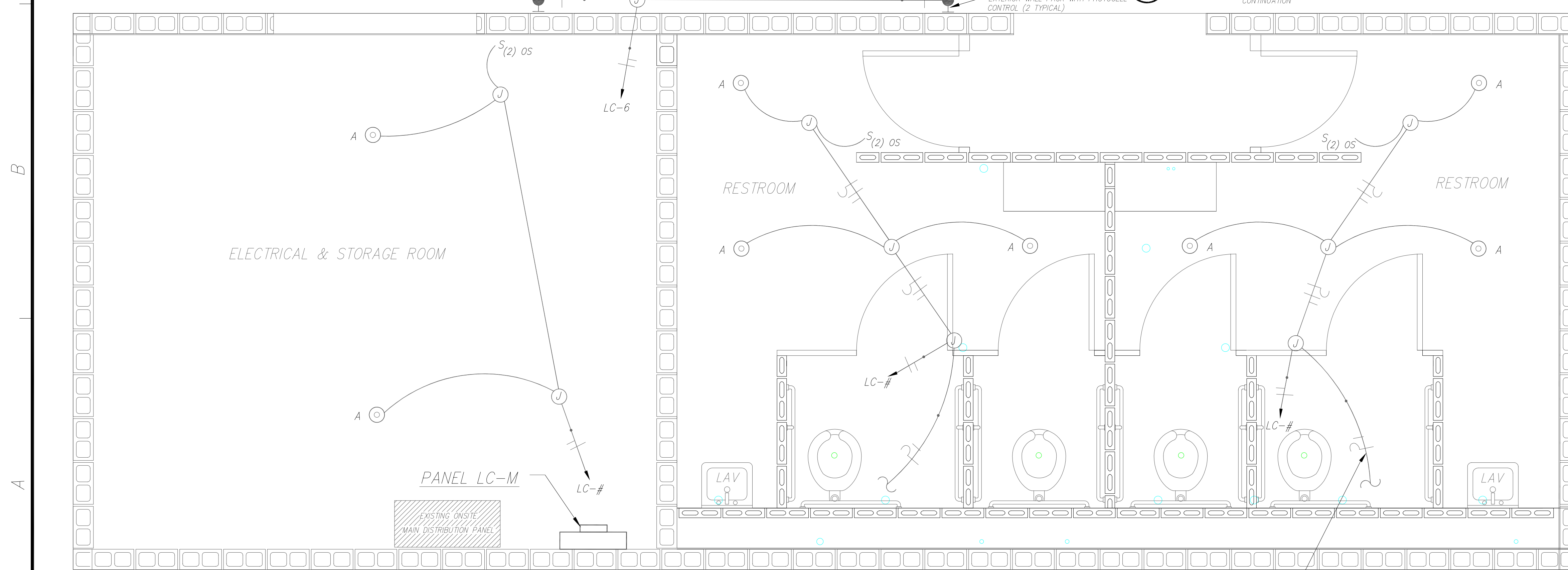
SHEET NO.:

M1.0

XXX##XXX.DWG



ELECTRICAL POWER PLAN  
SCALE: 1/2" = 1'-0"



ELECTRICAL POWER PLAN  
SCALE: 1/2" = 1'-0"

- GENERAL ELECTRICAL NOTES
- THESE DRAWINGS ARE SCHEMATIC REPRESENTATION OF THE ELECTRICAL EQUIPMENT REQUIRED AT THIS FACILITY. EXACT MATERIAL TAKE-OFFS ARE THE RESPONSIBILITY OF THE ELECTRICAL CONTRACTOR.
  - IT IS THE RESPONSIBILITY OF THE ELECTRICAL CONTRACTOR TO VISIT THE SITE AND ESTABLISH SITE CONDITIONS BEFORE PROVIDING BID OR ANY ON SITE WORK & MATERIALS.
  - THE ELECTRICAL CONTRACTOR IS RESPONSIBLE FOR PROVIDING ALL MATERIAL AND LABOR AS IDENTIFIED ON THIS DRAWING AND THE PROVIDED SCOPE OF WORK.
  - THE ELECTRICAL CONTRACTOR IS TO TAKE STEP TO SAFEGUARD ALL EXISTING EQUIPMENT ON SITE AND REPAIR/REPLACE ANY DAMAGE EQUIPMENT NOT IDENTIFIED FOR REMOVAL. THE ELECTRICAL CONTRACTOR IS TO COORDINATE INSTALLATION WITH THE GENERAL AND MECHANICAL CONTRACTOR.
  - THE ELECTRICAL CONTRACTOR MUST RECEIVE PERMISSION FROM THE ENGINEER OF RECORD BEFORE MAKING ANY PENETRATION OR ATTACHING TO THE BUILDING SYSTEM AND/OR STRUCTURAL STEEL.
  - ANY PENETRATIONS THROUGH WALLS AND ROOF SHALL BE SEALED WATER TIGHT AND INSTALLED PER THE ROOF MANUFACTURER'S WARRANTY.
  - THE ELECTRICAL CONTRACTOR IS RESPONSIBLE FOR OBTAINING ANY NECESSARY PERMITS, INSPECTIONS, AND ASSOCIATED FEES/CHARGES TO COMPLETE THE ELECTRICAL WORK IDENTIFIED ON THIS DRAWING.
  - ALL WIRE SHALL BE COPPER THHN/THWN, 600V INSULATION SIZED FOR APPLICATION ACCORDING TO CURRENT NEC (MOST CURRENT).
  - PROVIDE GROUNDING PER NEC (MOST CURRENT).
  - ALL EXPOSED EQUIPMENT, CONDUIT AND BOXES SHALL BE PAINTED AND FINISHED PER THE ARCHITECT.
  - COMPLY WITH ALL LOCAL CODES & ORDINANCES INCLUDING MOST CURRENT NFPA 70 (NEC). NO COMMON NEUTRALS SHALL BE ALLOWED.
  - THE ELECTRICAL CONTRACTOR SHALL LOCATE AND VERIFY LOCATIONS OF UNDERGROUND UTILITIES PRIOR TO ANY EXCAVATION.

ELECTRICAL LEGEND

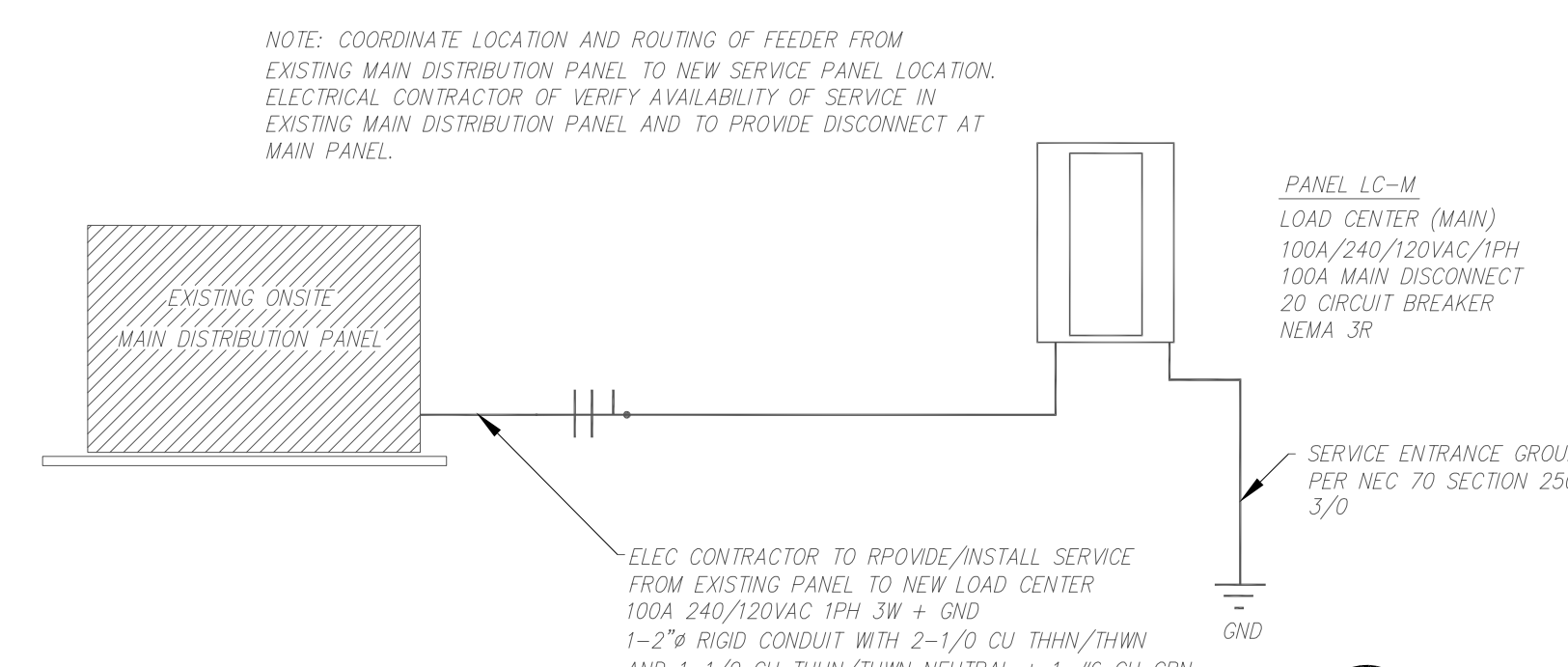
	JUNCTION BOX - CONNECT EQUIPMENT AS REQUIRED		120V RECEPTACLE, DUPLEX - 18" AFF UNLESS OTHERWISE NOTED
	MAIN LOAD CENTER		120V RECEPTACLE, GROUND FAULT INTERRUPTING
	DISCONNECT SWITCH - SIZE AS NOTED ON PLANS AMPS/POLE		LED FIXTURE - WALL MOUNT - LETTER DENOTES TYPE SEE LEGEND THIS SHEET FOR MODEL#
	SWITCH - SINGLE POLE, 4" AFF, LOWER CASE LETTER AND CIRCUIT SWITCHING, SEE SWITCHING LEGEND THIS SHEET FOR MODEL #		LED FIXTURE - CEILING MOUNT - LETTER DENOTES TYPE SEE LEGEND THIS SHEET FOR MODEL #
	SWITCH - DUAL CIRCUIT OCC/VAC H, 4" AFF SEE SWITCH LEGEND THIS SHEET FOR MODEL #		WATER HEATER AS NOTED
	MANUAL MOTOR STARTER - SQUARE D CLASS 1510 W/OVERLOAD PROTECTION IN ALL LEGS		NOTE: COUNTER TOP - 8" ON CENTER ABOVE FINISHED COUNTER
	WIRE AND CONDUIT		NOTE: DISCONNECT SWITCH
	HOMERUN TO MAIN PANEL - SYMBOL DENOTES PHASE, SW PHASE, NEUTRAL, RUN, GROUND		NOTE: FURNISHED BY OTHERS
	ELECTRICAL EQUIPMENT AS NOTED		NOTE: WEATHER PROOF PHASE, NEUTRAL, RUN, GROUND
	MOTOR		NOTE: WATER HEATER

LIGHTING AND FIXTURE SCHEDULE

NOTE	DESCRIPTION	MANUFACTURER	MODEL #	QUANTITY	TEMPERATURE
A	CEILING SURFACE MOUNT WET LOCATION LED POLYCARBONATE RESTROOM FIXTURE	BROWLEE LTD	1005-CRLED-40K-T	4 EA	4000K
H	EXTERIOR LED WALL PACK FIXTURE W/PHOTO CONTROL	BROWLEE LTD	1005-CRLED-40K-T	2 EA	4000K
EF-1	EXHAUST FAN MATCH EXISTING	MATCH	MATCH	2 EA	
SH-1	RESISTANCE HEATER MATCH EXISTING	MATCH	MATCH	2 EA	

PANEL SCHEDULE

NOTE	DESCRIPTION	CIRCUIT BREAKERS	EQUIPMENT/DEVICE
LC-M	LOAD CENTER (MAIN) - SQUARE D MODEL NO. HOM2040M100R8B OR APPROVED EQUIVALENT - 100A/240/120VAC/1PH NEMA 3R SURFACE MOUNT ENCLOSURE WITH 1-100A MAIN CIRCUIT BREAKER AND 20 CIRCUIT BREAKER SPACES	(1) - 100A/20 (14) - 20A/1P (3) - 20A/1P/GFI (1) - 30A/1P/GFI	MAIN CB (PANEL LC-1) EF-1, LIGHTS, HEAT TAPE, RECEPT, SPARES, ETC. SH-1 (2 REQD) WH-1 (1 REQD)



ELECTRICAL SERVICE RISER  
SCALE: N/A

APPROVED BY:

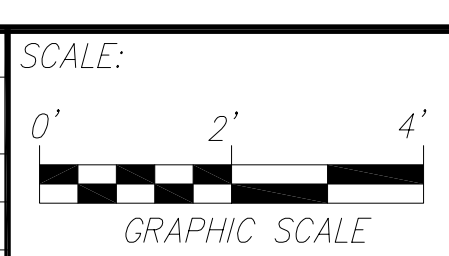
TITLE	SIGNATURE	DATE
TITLE	SIGNATURE	DATE
TITLE	SIGNATURE	DATE

DESIGNED BY: XYZ

DRAWN BY: XYZ

CHECKED BY: XYZ

REV	DESCRIPTION	BY	DATE
A	ISSUED FOR BIDS	JSD	01/01/20



LOCATION:

ALCOA 40 PARK  
1180 SHOBE ROAD  
BRYANT, ARKANSAS  
72022



DWG. TITLE:

ALCOA 40 PARK  
BATHROOM  
ELECTRICAL  
POWER AND LIGHTING

REVISION NO./DATE:  
B - 6/28/22

PROJECT NO.:

SHEET NO.:  
E1.0

XXX###XXX.DWG