

6X6 TAPPING SLEEVE  
AND 6" GATE VALVE

60 LF 12" STEEL  
ENCASEMENT

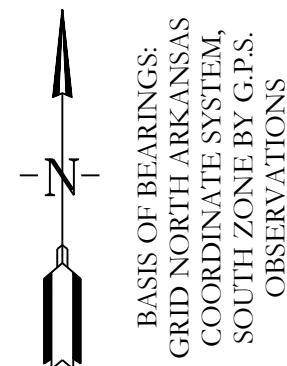
DUPLEX GRINDER  
PUMP STATION AND  
1-1/4" FORCE MAIN  
*There will be check valves in the forcemain*

PROPOSED  
MONTESSORI  
SCHOOL

NEW GRAVEL DRIVE AND PARKING

8X2 TAPPING SLEEVE  
AND 2" GATE VALVE  
AND 2X1-1/4 REDUCER

Notes: New grinder pump and sewer service will remain private



BASIS OF BEARINGS:  
GRID NORTH ARKANSAS  
COORDINATE SYSTEM,  
SOUTH ZONE BY G.P.S.  
OBSERVATIONS

UTILITY PLAN LEGEND

- WATER METER
- WATER VALVE
- FIRE HYDRANT
- SANITARY SEWER LINE
- WATER LINE
- SEWER MANHOLE
- SANITARY SEWER CLEANOUT

**HOPE**  
CONSULTING  
ENGINEERS - SURVEYORS

117 S. Market Street,  
Benton, Arkansas 72015  
PH. (501)315-2626  
FAX (501) 315-0024  
www.hopeconsulting.com

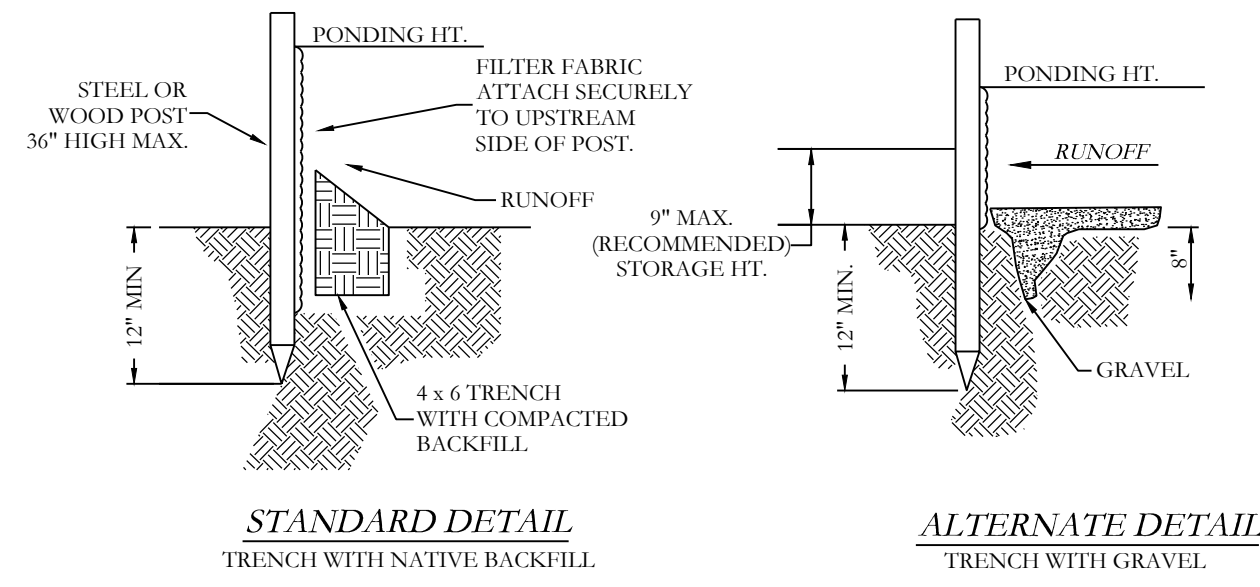
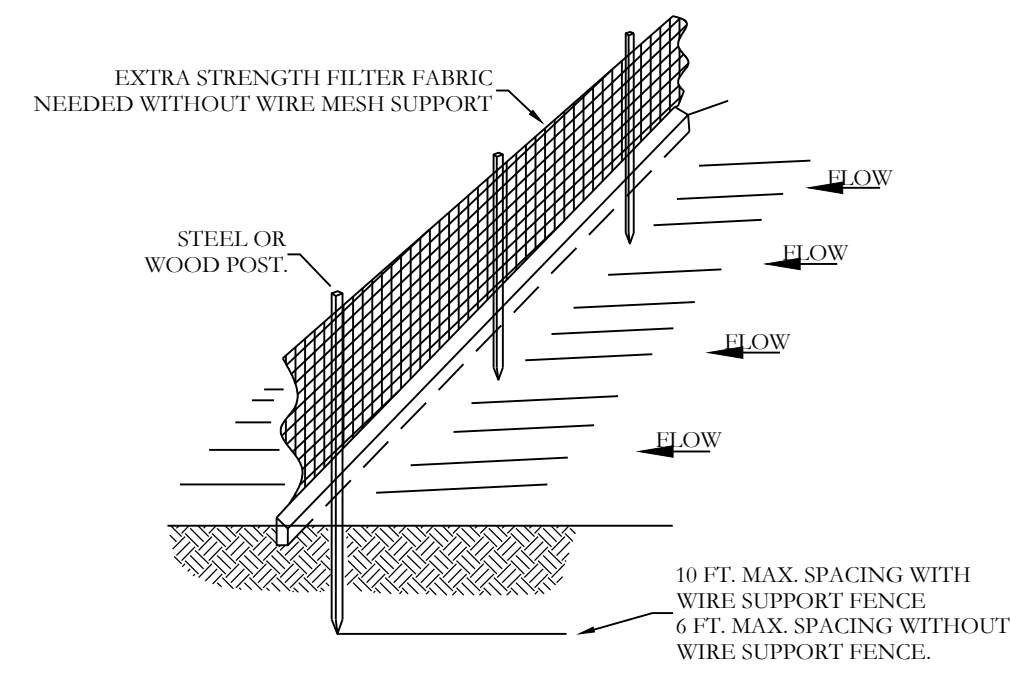
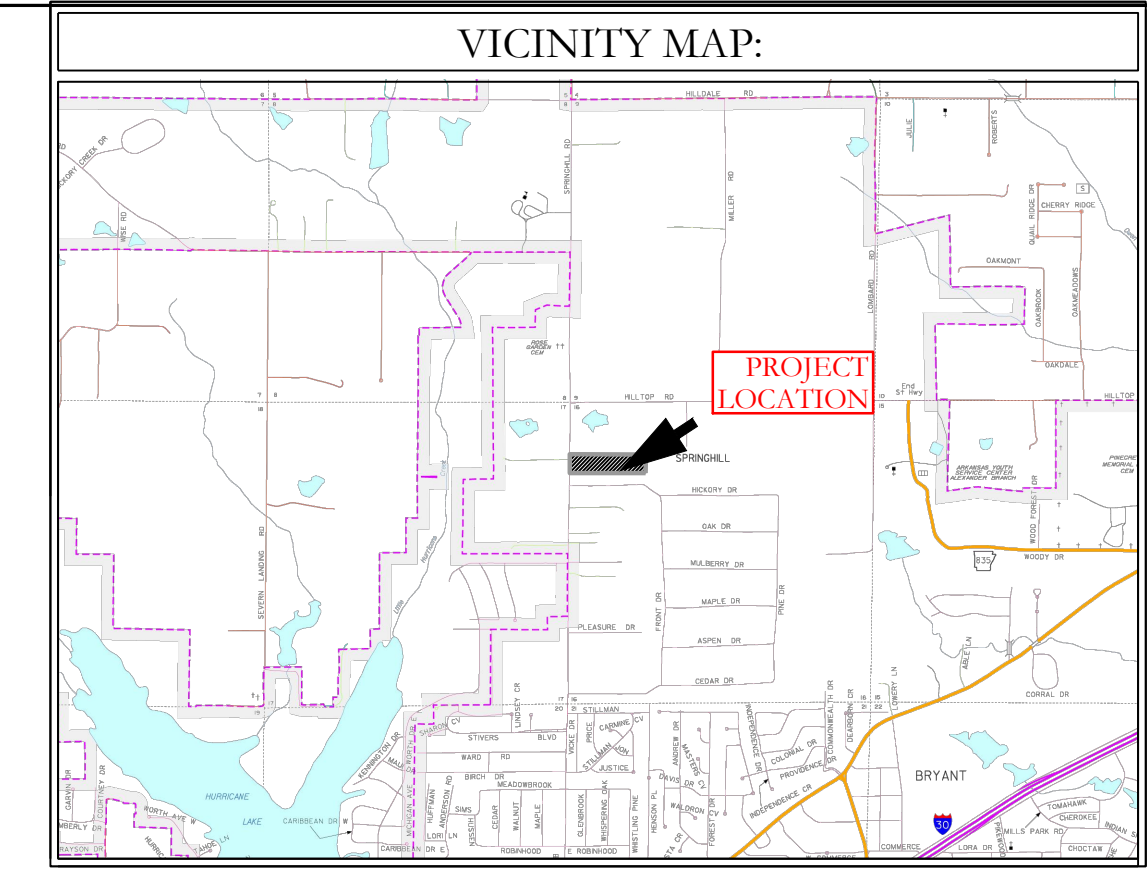
FOR USE AND BENEFIT OF:  
**SHANNON NUCKOLS**

UTILITY PLAN  
NUCKOLS ESTATES  
BRYANT, SALINE COUNTY, ARKANSAS

DATE:	08/10/2022	C.A.D. BY:	B. JOHNSON	DRAWING NUMBER:	
REVISED:		CHECKED BY:		20-0673	
SHEET:	500	SCALE:	1" = 100'		
	01S	14W	0 16	400	62 1762

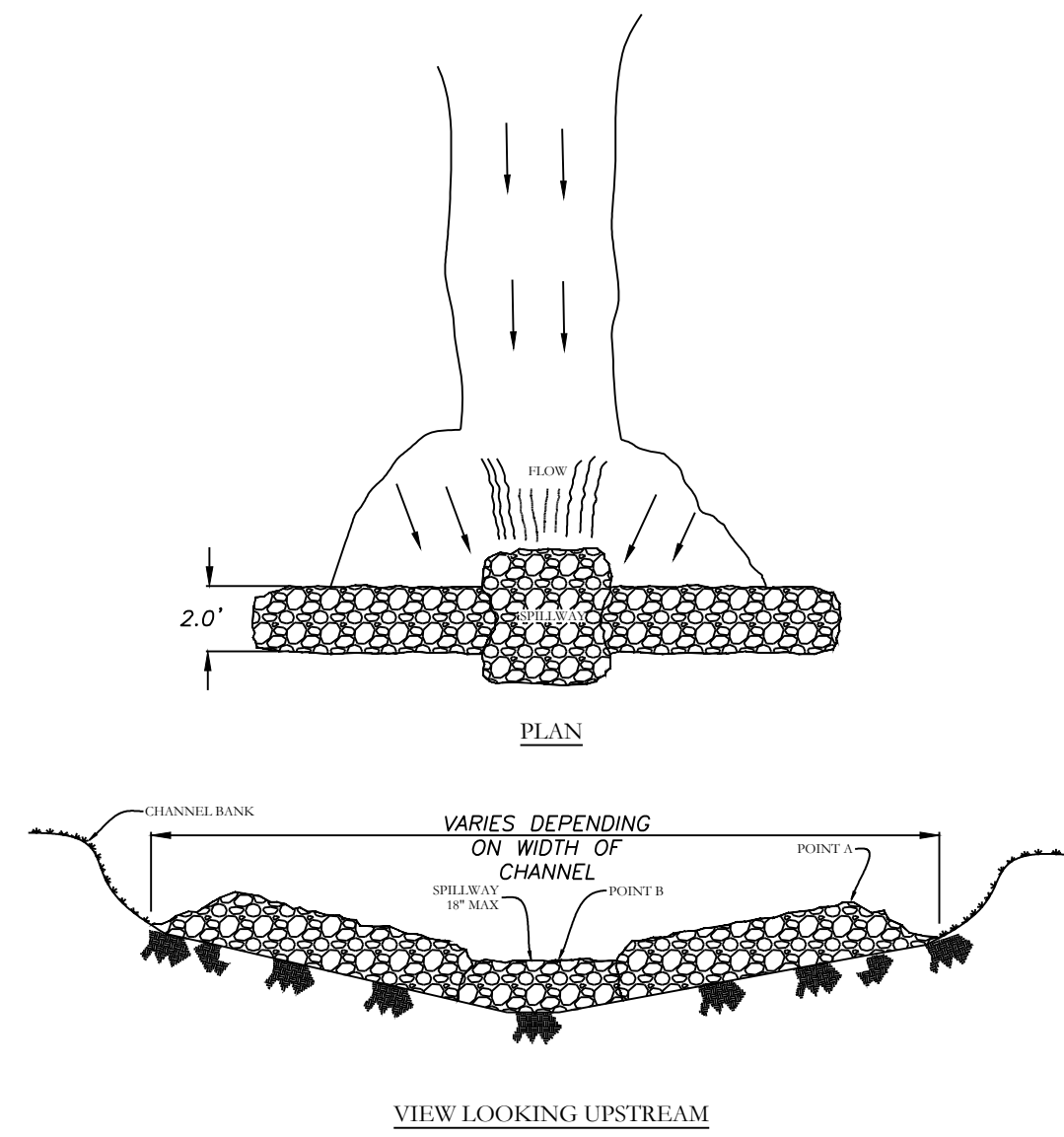
K:\Land Projects\2010\20100673 Springhill road Construction\20100673Site Plan 06-28-22 phase 1.dwg





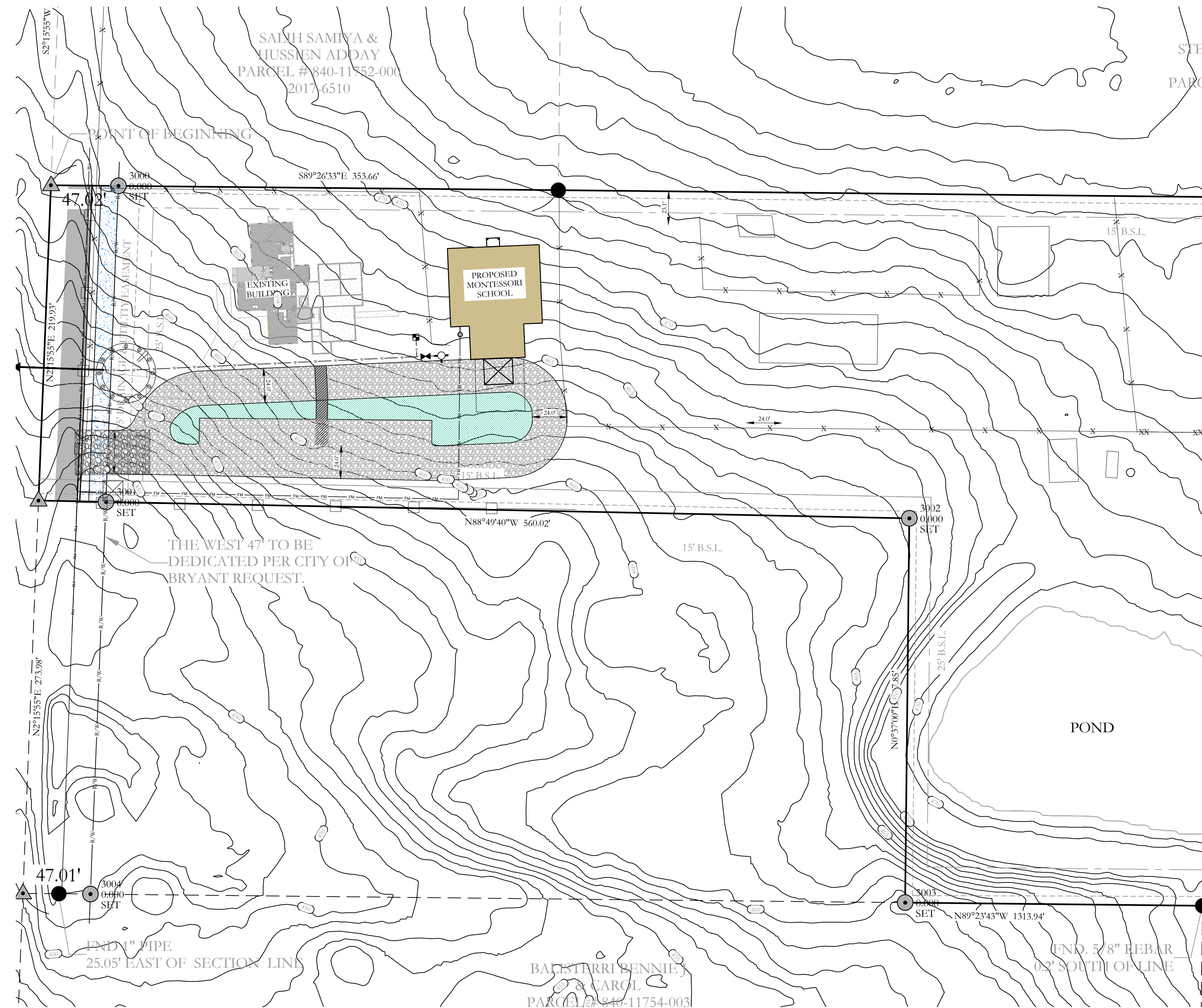
- NOTE:
- 1) INSPECT AND REPAIR FENCE AFTER EACH STORM EVENT AND REMOVE SEDIMENT WHEN NECESSARY.
  - 2) REMOVED SEDIMENT SHALL BE DEPOSITED TO AN AREA THAT WILL NOT CONTRIBUTE SEDIMENT OFF-SITE AND CAN BE PERMANENTLY STABILIZED.
  - 3) SILT FENCE SHALL BE PLACED ON SLOPE CONTOURS TO MAXIMIZE PONDING EFFICIENCY.

**SILT FENCE**



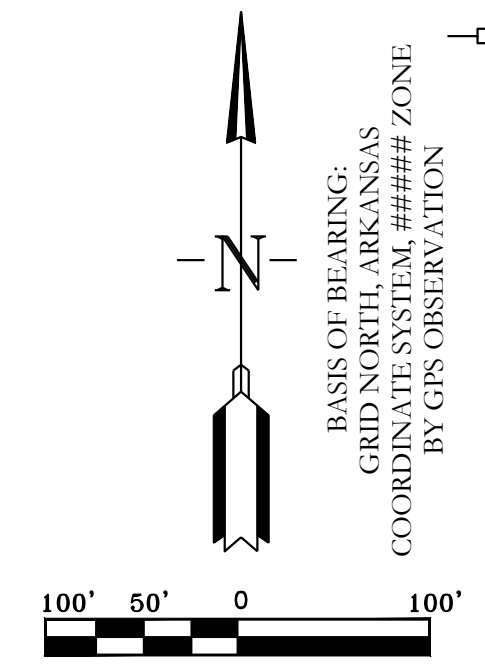
- NOTES:
- 1) POINT 'C' MUST BE HIGHER THAN POINT 'B' (SLEW WAY HEIGHT).
  - 2) TO USE RIP-RAP CHECK DAMS EFFECTIVELY, THEY MUST BE BUILT WITH SLEW WAY SPACING.
  - 3) USE STRAW, ROCKS, OR FILTER FABRIC TO FILL SLEW WAY AND POINT 'B'.
  - 4) BACKFILL MATERIAL TO PREVENT EROSION OF SLEW WAY CHECK DAM.
  - 5) SLEW WAY HEIGHT SHALL NOT EXCEED 18\"/>

**RIP-RAP CHECK DAM**



**ERC LEGEND**

- SITE POSTING
- CONC. WASHOUT DETENTION AREA
- SILT FENCE
- RIP RAP CHECK DAM
- CONSTRUCTION ENTRANCE
- DISTURBED AREA



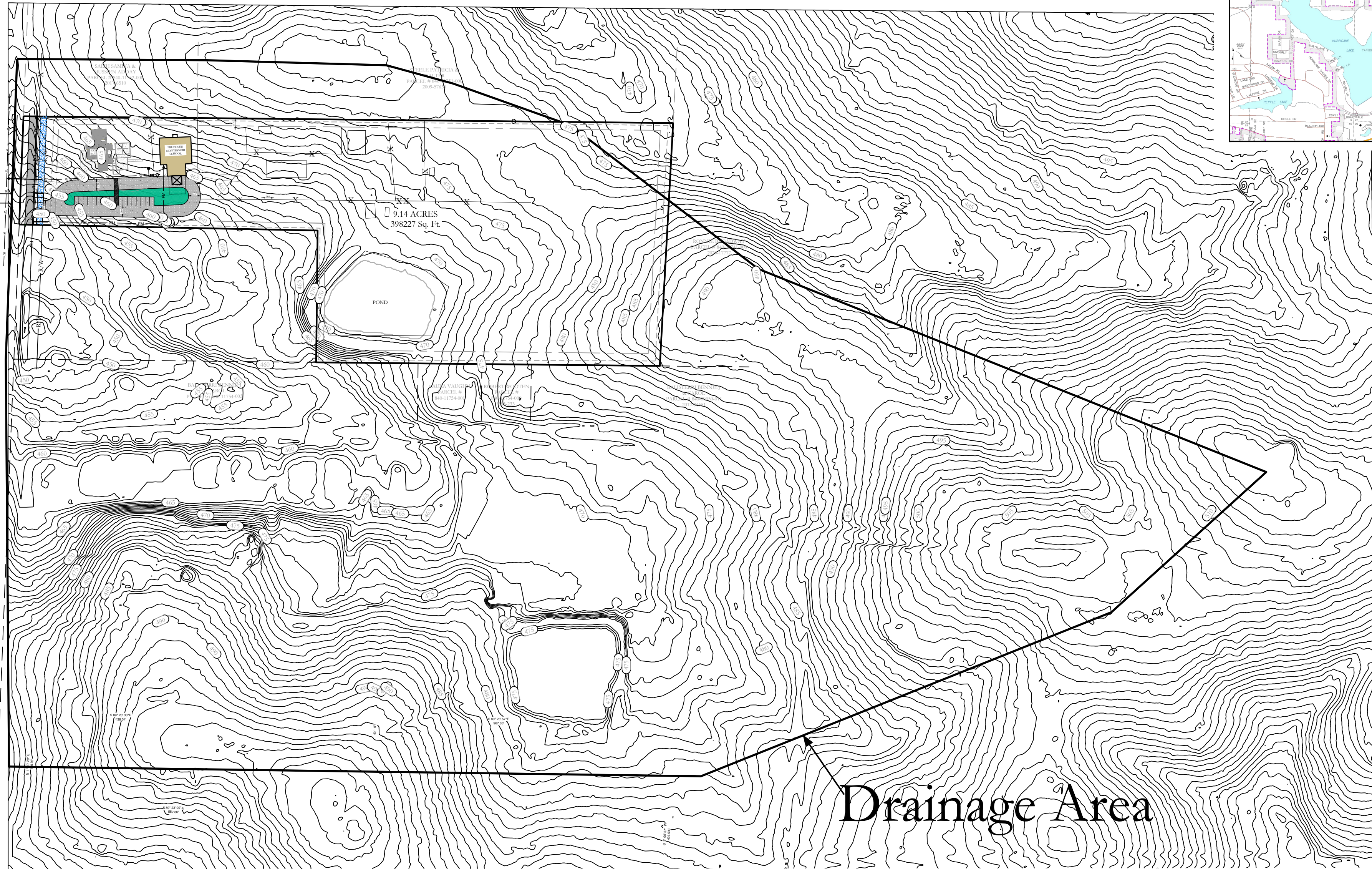
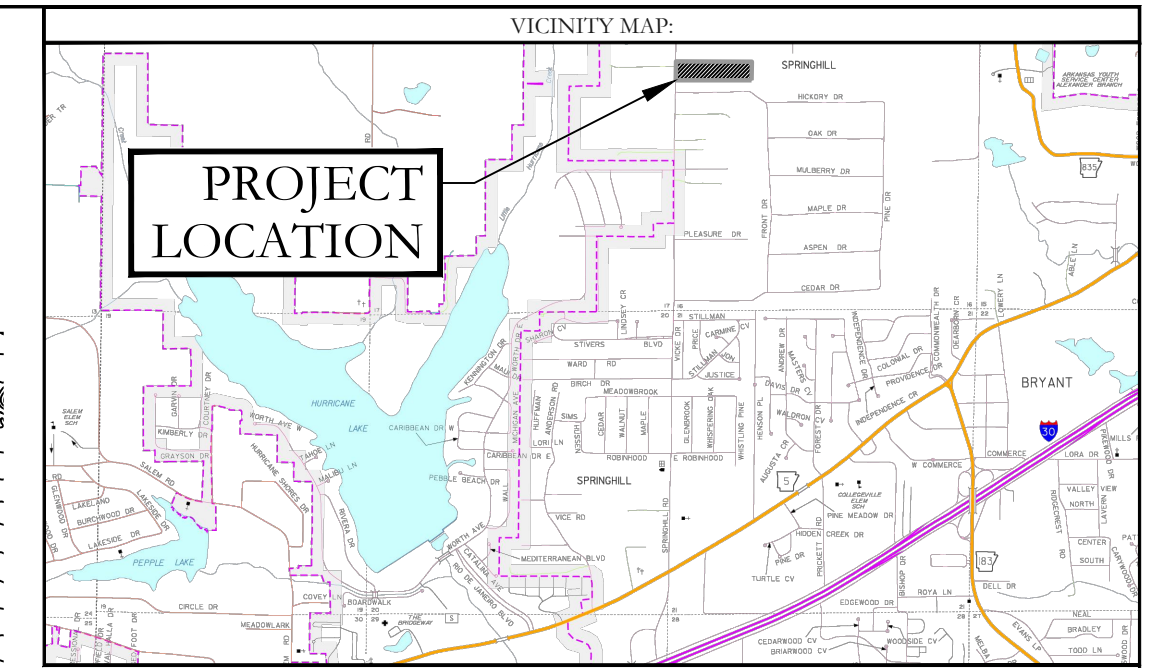
**HOPE CONSULTING**  
ENGINEERS - SURVEYORS

117 S. Market Street,  
Benton, Arkansas 72015  
PH. (501)315-2626  
FAX (501) 315-0024  
www.hopeconsulting.com

FOR USE AND BENEFIT OF: <b>SHANNON NUCKOLS</b>					
EROSION CONTROL PLAN BRYANT, SALINE COUNTY, ARKANSAS					
DATE:	08/10/2022	C.A.D. BY:	###	DRAWING NUMBER:	20-0673
REVISION:		CHECKED BY:			
SHEET:	C-4.0	SCALE:	1" = 100'		
500	01S	14W	0	16	400
				62	1762

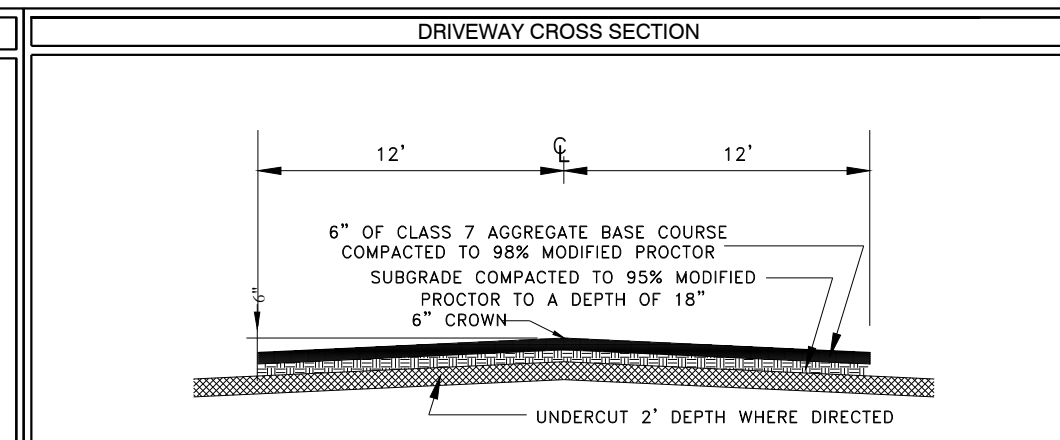
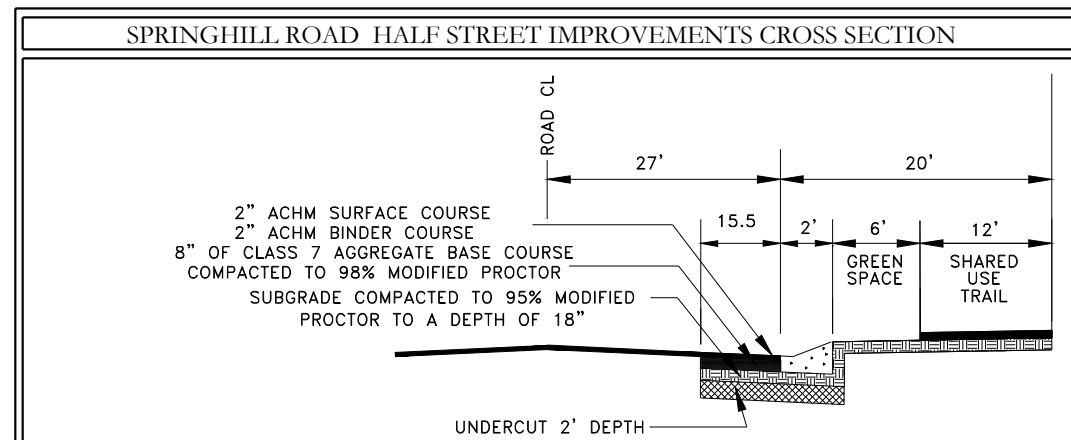
K:\LAND PROJECTS\2004\COMMERCIAL\2020\20-0673\SPRIN HILL ROAD\CONCRESTONE MONTESSORI\30-0673 SITE PLAN-06-28-22 PHASE 1.DWG





Drainage Area

BASIS OF BEARINGS:  
 GRID NORTH ARKANSAS  
 COORDINATE SYSTEM,  
 SOUTH ZONE BY G.P.S.  
 OBSERVATIONS



**HOPE**  
 CONSULTING  
 ENGINEERS - SURVEYORS

117 S. Market Street,  
 Benton, Arkansas 72015  
 PH. (501)315-2626  
 FAX (501) 315-0024  
 www.hopeconsulting.com

FOR USE AND BENEFIT OF:  
 SHANNON NUCKOLS

DRAINAGE AREA EXHIBIT  
 NUCKOLS ESTATES  
 BRYANT, SALINE COUNTY, ARKANSAS

DATE:	08/10/2022	C.A.D. BY:	B.JOHNSON	DRAWING NUMBER:	
REVISED:	08/24/2022	CHECKED BY:		20-0673	
SHEET:		SCALE:	1" = 150'		
500	01S	14W	0 16	400	62 1762