

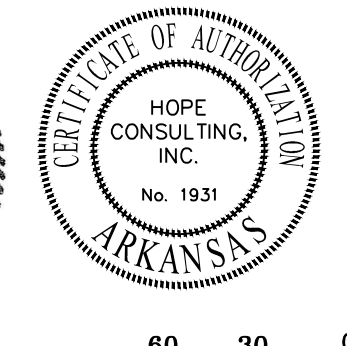
**WATER UTILITY NOTES:**  
 ALL WATER CONSTRUCTION SHALL BE DONE IN ACCORDANCE WITH BENTON UTILITIES' MASTER SPECIFICATIONS FOR DESIGN AND CONSTRUCTION OF WATER AND SEWER UTILITIES' 2015 EDITION.

**SEWER CONSTRUCTION NOTES:**  
 ALL SEWER CONSTRUCTION SHALL BE DONE IN ACCORDANCE WITH BENTON UTILITIES' MASTER SPECIFICATIONS FOR DESIGN AND CONSTRUCTION OF WATER AND SEWER UTILITIES' 2015 EDITION.

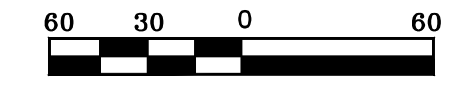
--- FUTURE COLLECTOR ROAD

LEGEND			
	COMPUTED POINT		FIRE HYDRANT
	FOUND MONUMENT		WATER VALVE
	SET 1/2" REBAR		POWER POLE
	MEASURED		STORM DRAIN/MANHOLE
	PLAT/DEED		GAS METER
	WATER METER		TELEPHONE PEDESTAL
	SEWER MANHOLE		SANITARY SEWER LINE
	OVERHEAD POWER LINE		TELEPHONE LINE
	12" WATER LINE		8" WATER LINE
	MISC FENCE LINE		GRASS
			CONCRETE
			B.S.L. = BUILDING SETBACK LINE
			P.L.S. = PERIMETER LANDSCAPE SETBACK

LEGEND	
	Found Aliquot Corner
	Found monument
	Set 1/2" Rebar
	Computed point
	Measured
	Plat/Deed
	Fence



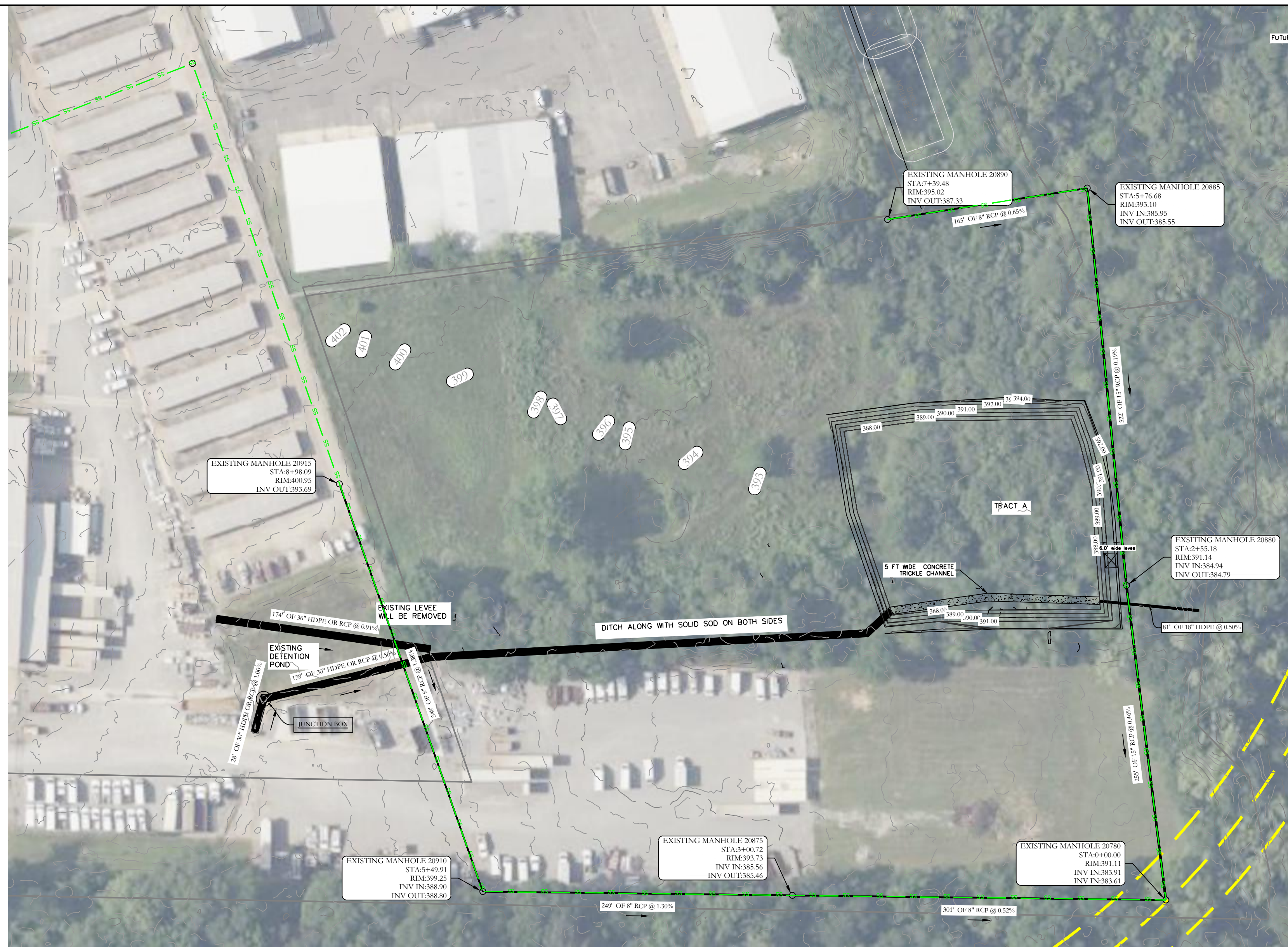
BASIS OF BEARING:  
 GRID NORTH, ARKANSAS  
 COORDINATE SYSTEM, SOUTH ZONE  
 BY GPS OBSERVATION



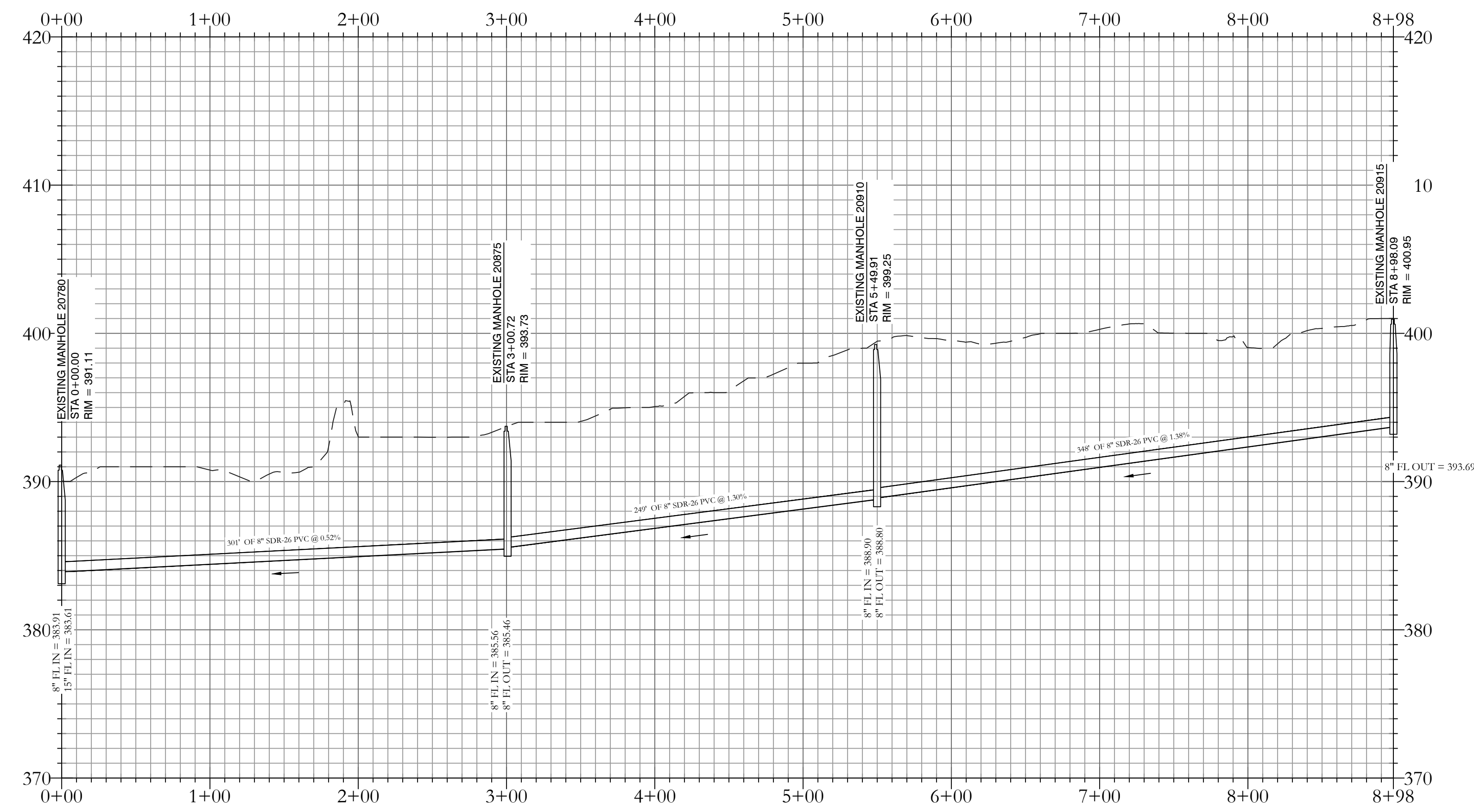
**HOPE CONSULTING**  
 ENGINEERS - SURVEYORS

117 S. Market Street,  
 Benton, Arkansas 72015  
 PH. (501)315-2626  
 FAX (501) 315-0024  
 www.hopeconsulting.com

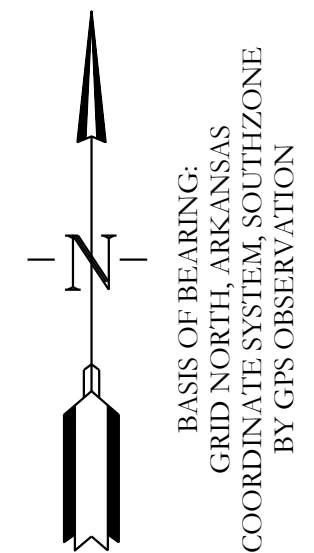
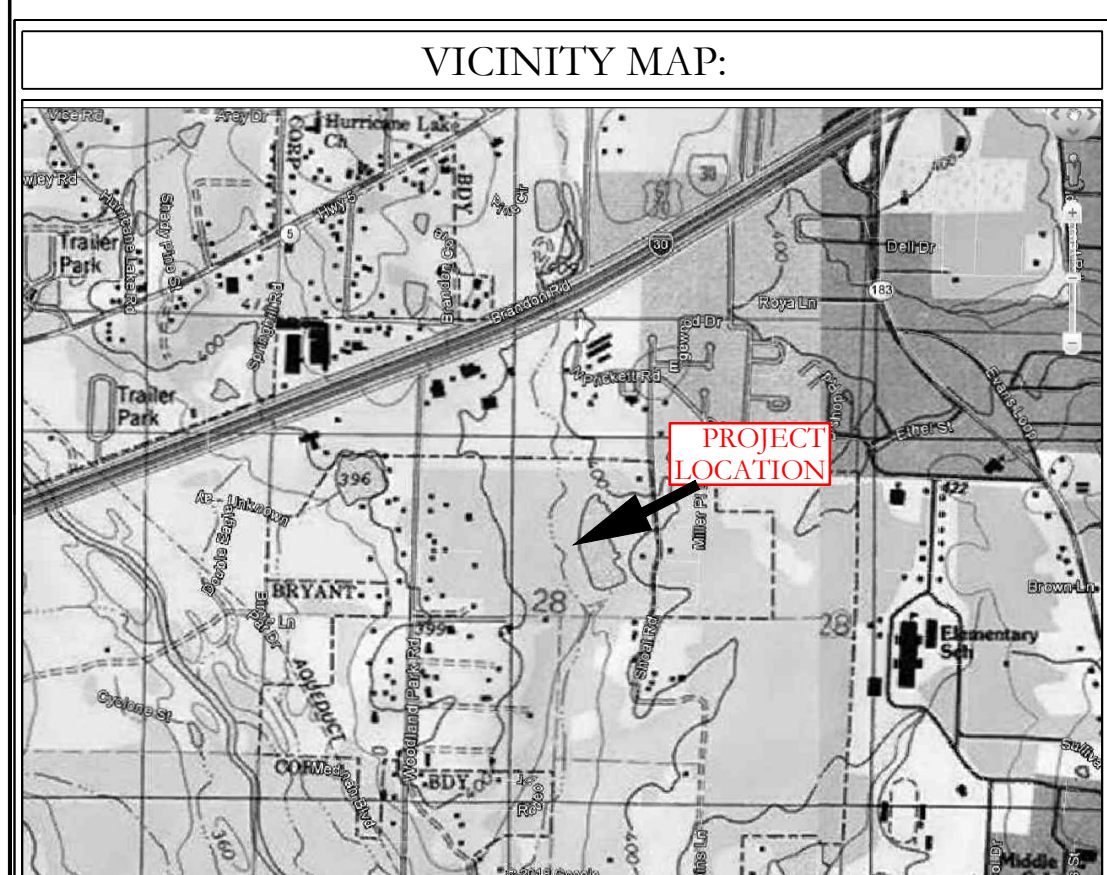
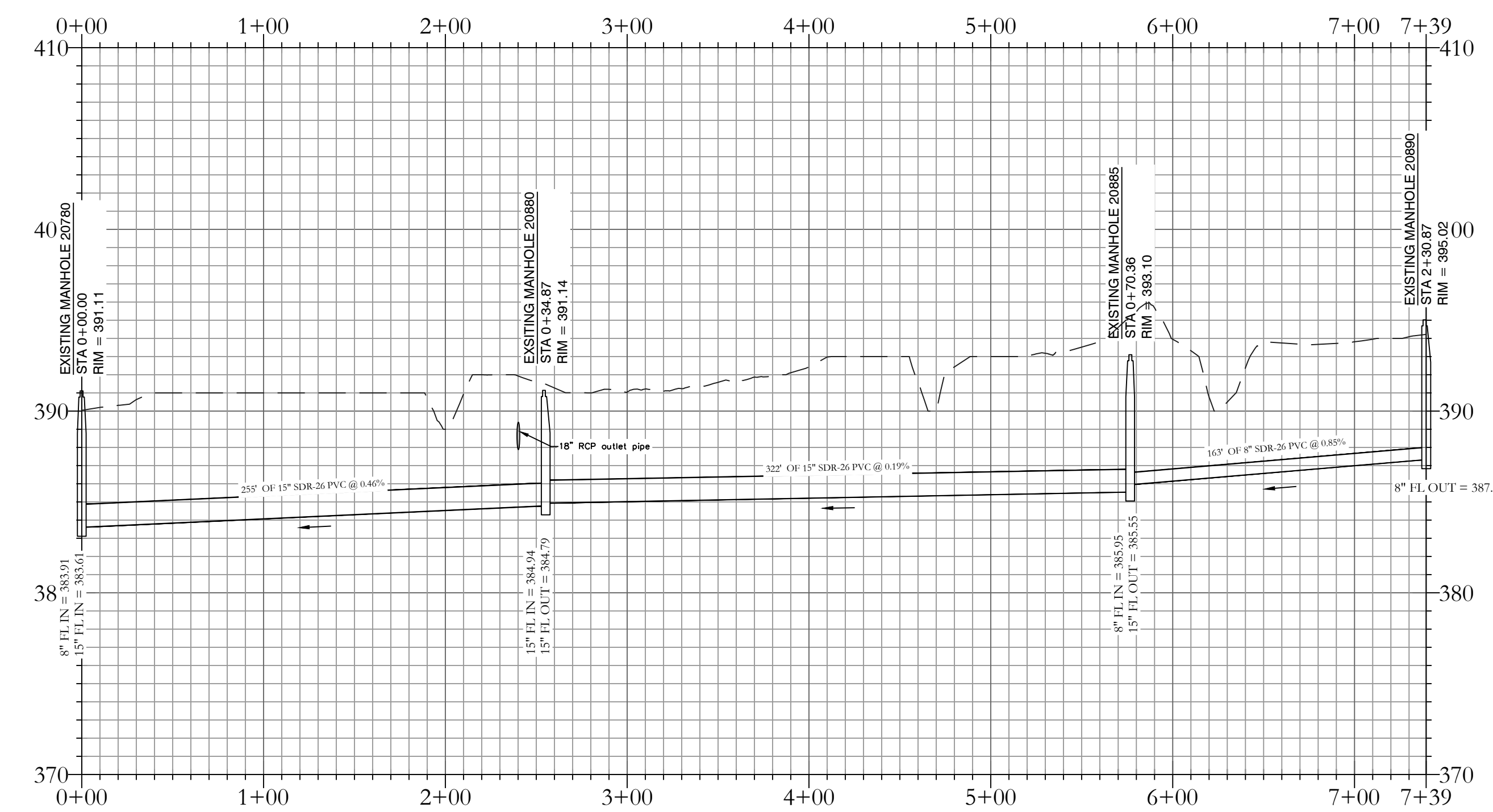
FOR USE AND BENEFIT OF: MIDDLETON DETENTION POND			
CEM PROPERTIES LIMITED PARTNERSHIP SITE PLAN 1800 WOODLANDS PARK, BRYANT, ARKANSAS			
DATE:	12/15/2022	C.A.D. BY:	###
REVISED:	##	CHECKED BY:	
SHEET:	C-1.0	SCALE:	1" = 60'
500	01S	14W	0 27 430 62 1664
			DRAWING NUMBER: <b>22-1258</b>



Existing Sewer 1 PROFILE



Existing Sewer 2 PROFILE



BASIS OF BEARING:  
GRID NORTH, ARKANSAS  
COORDINATE SYSTEM, SOUTH ZONE  
BY GPS OBSERVATION

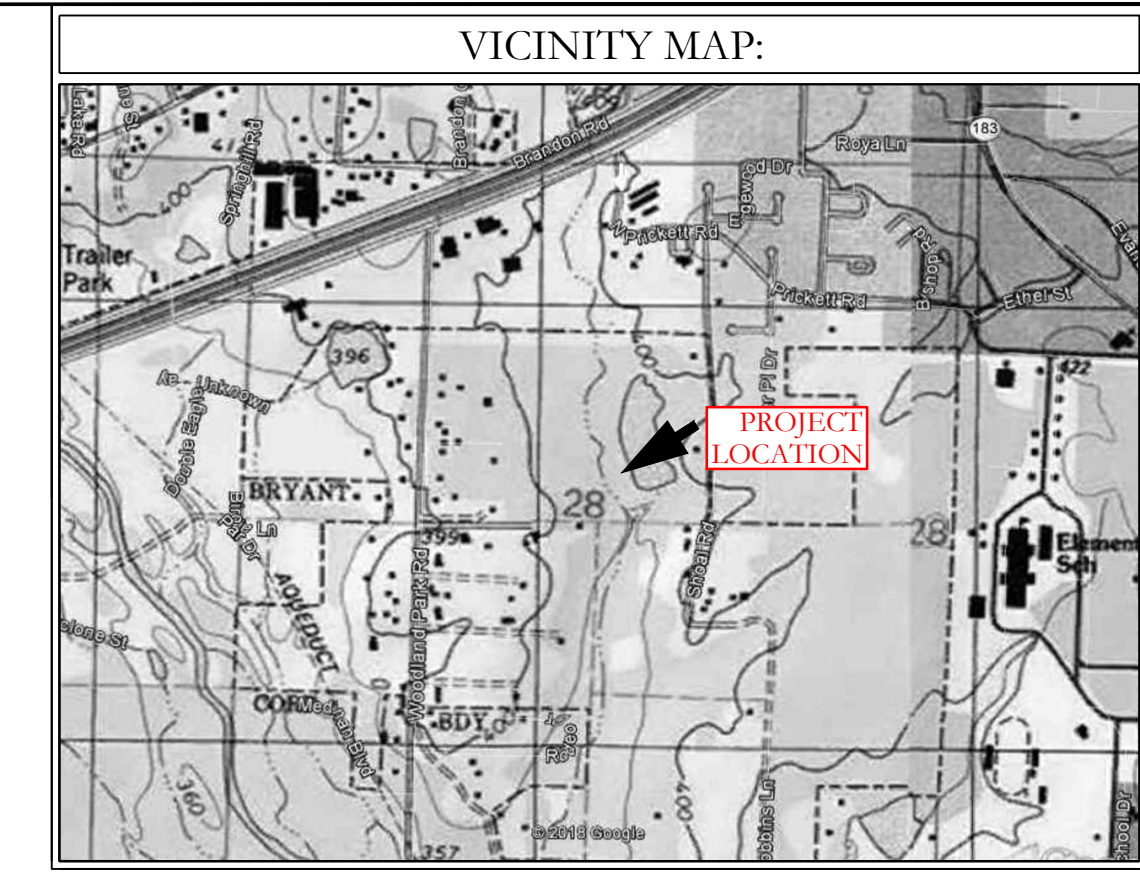
**HOPE CONSULTING**  
ENGINEERS - SURVEYORS

117 S. Market Street,  
Benton, Arkansas 72015  
PH. (501)315-2626  
FAX (501) 315-0024  
www.hopeconsulting.com

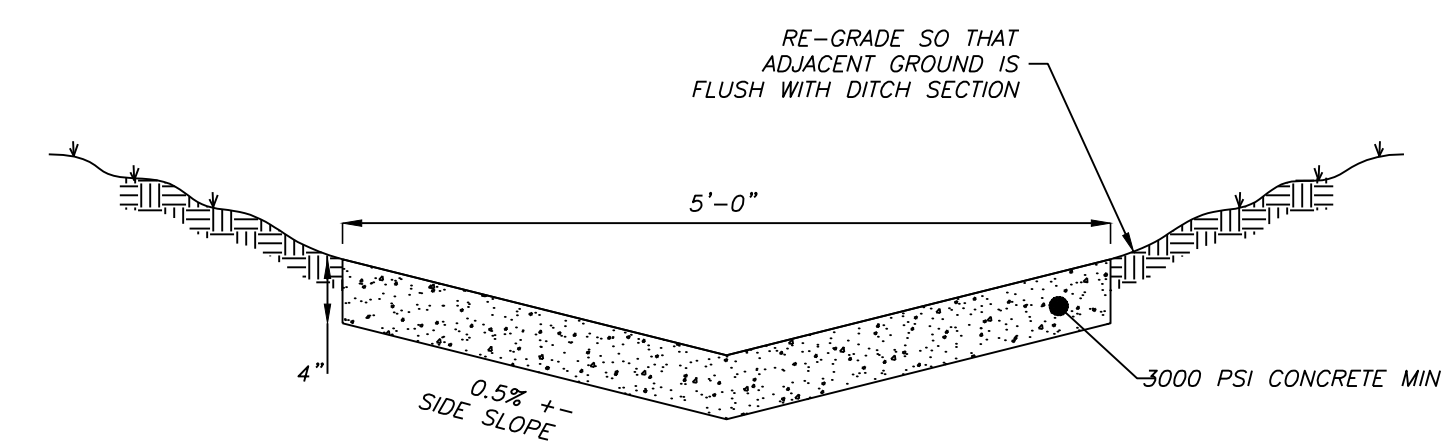
FOR USE AND BENEFIT OF:  
**MIDDLETON DETENTION POND**

**CEM PROPERTIES LIMITED PARTNERSHIP**  
UTILITY PLAN  
1800 WOODLANDS PARK, BRYANT, ARKANSAS

DATE:	12/15/2022	C.A.D. BY:	###	DRAWING NUMBER:
REVISED:	##	CHECKED BY:		<b>22-1258</b>
SHEET:	C-2.0	SCALE:	1" = 60'	
500	01S	14W	0 27 430	62 1664



- EARTHEN SLOPE NOTE:**  
ALL EARTHEN DETENTION POND SLOPES ON BOTH THE INTERIOR AND EXTERIOR OF THE POND SHALL HAVE A MAXIMUM SLOPE OF 3:1.
- NOTE:**
1. DETENTION POND WILL BE REQUIRED TO BE STABILIZED WITH SOLID SOD STABILIZATION PER THE STORM WATER MANAGEMENT MANUAL.
  2. DETENTION POND WILL HAVE A 6' WIDE LEVEE.
  3. DRAINAGE DITCH LEADING TO NEW DETENTION POND WILL REQUIRE SOLID SOD STABILIZATION PER THE STORM WATER MANAGEMENT MANUAL.
  4. DETENTION POND WILL REQUIRE CONCRETE TRICKLE CHANNELS.



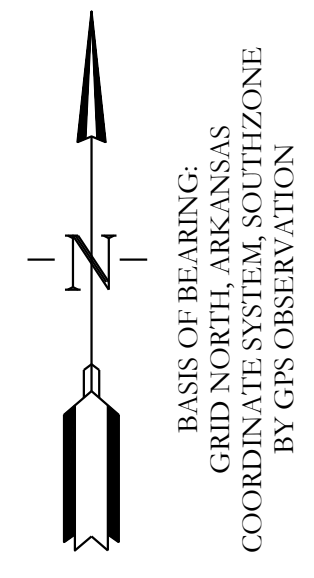
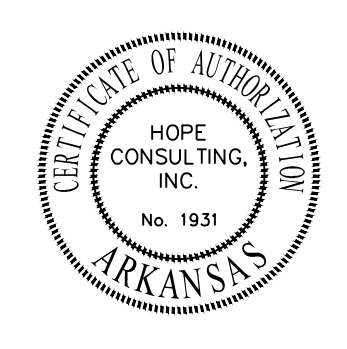
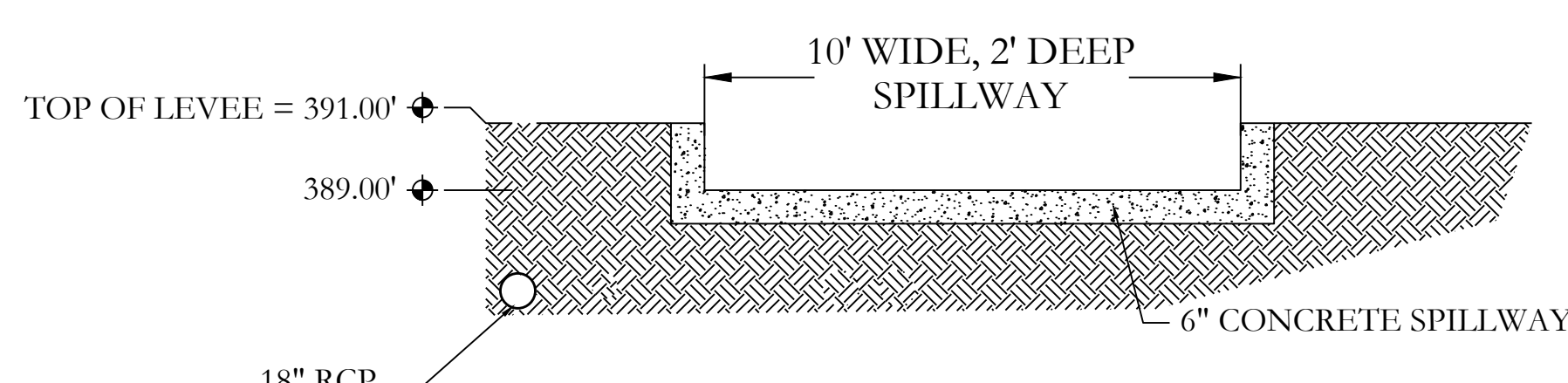
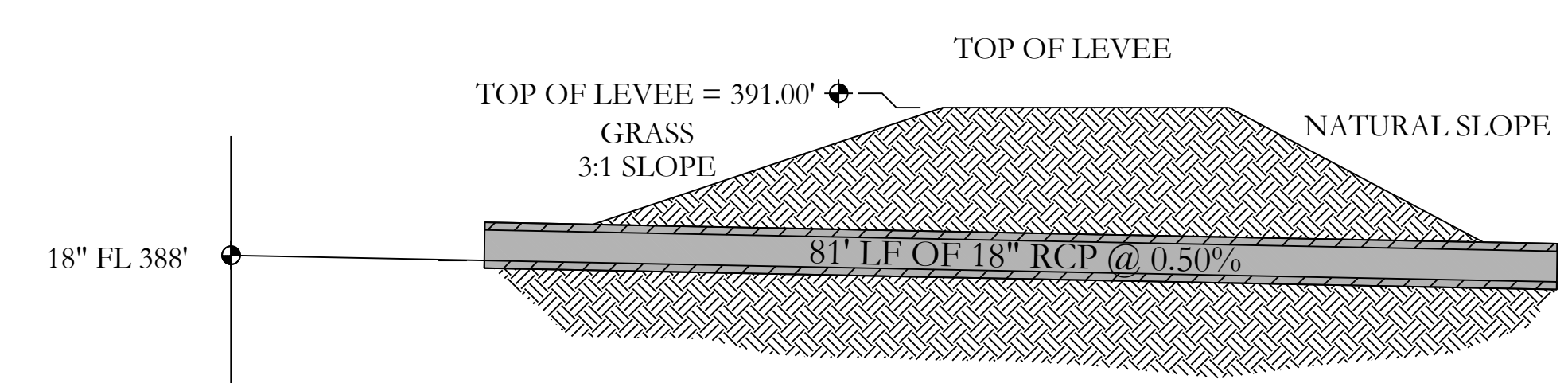
**DETENTION POND MAINTENANCE PLAN**

**Background**  
The detention pond is located on the southeast side of the property. It is designed to temporarily detain stormwater to meet water quantity criteria before discharging off the property.

**Routine Maintenance**  
The property owners association will maintain the drainage easements located in Tract "A". Routine maintenance will include but not be limited to:  
-Mowing of the bank slopes and area around the pond on a monthly basis during the growing season and as needed during the cooler months.  
-The outlet pipe from the pond and other areas will be inspected monthly for debris which could inhibit the proper flow of discharge. Any debris will be removed immediately and disposed of or placed in a location to prevent future maintenance and to not cause impact up or downstream of the structure.  
-Trash will be removed from around the pond to prevent entering the pond. Generally, the site should be kept free of loose trash which could be carried off site by wind or rain.  
-Inspect the pond and outlet pipe for non-routine maintenance need.

**Periodic or Non-Routine Maintenance**  
The routine inspection of the pond area and discharge pipe will identify needed repairs and non-routine maintenance. These items may include but not be limited to:  
-Re-growth of trees on or around the pond bank. These should be cut and removed from the pond area.  
-Sediment from the site may accumulate in the pond bottom and reduce the pond to below design volume requirements. The pond should be excavated if the pond bottom elevation reached a level that allows excessive aquatic growth or reduces the pond efficiency such, that the sediments are passing the discharge structure and release off site.  
-Stabilization or re-grading of side slopes may be required periodically or after excessive rain events. Any disturbance of slopes should be reseeded or may require installation of erosion control materials until seeding can reestablish adequate grasses to prevent future erosion.  
-Any other maintenance or repairs which would minimize other maintenance to the pond or outfall structures.

**DETENTION POND**



**DETAIL (NTS) TRICKLE CHANNEL SECTION**

<b>HOPE CONSULTING</b> ENGINEERS - SURVEYORS		117 S. Market Street, Benton, Arkansas 72015 PH. (501)315-2626 FAX (501) 315-0024 www.hopeconsulting.com	
FOR USE AND BENEFIT OF: <b>MIDDLETON DETENTION POND</b>			
<b>CEM PROPERTIES LIMITED PARTNERSHIP DETENTION POND</b> 1800 WOODLANDS PARK, BRYANT, ARKANSAS			
DATE: 12/15/2022	C.A.D. BY: ###	DRAWING NUMBER: <b>22-1258</b>	
REVISED: ##	CHECKED BY:		
SHEET: C-3.0	SCALE:		
500	01S	14W	0 27 430 62 1664