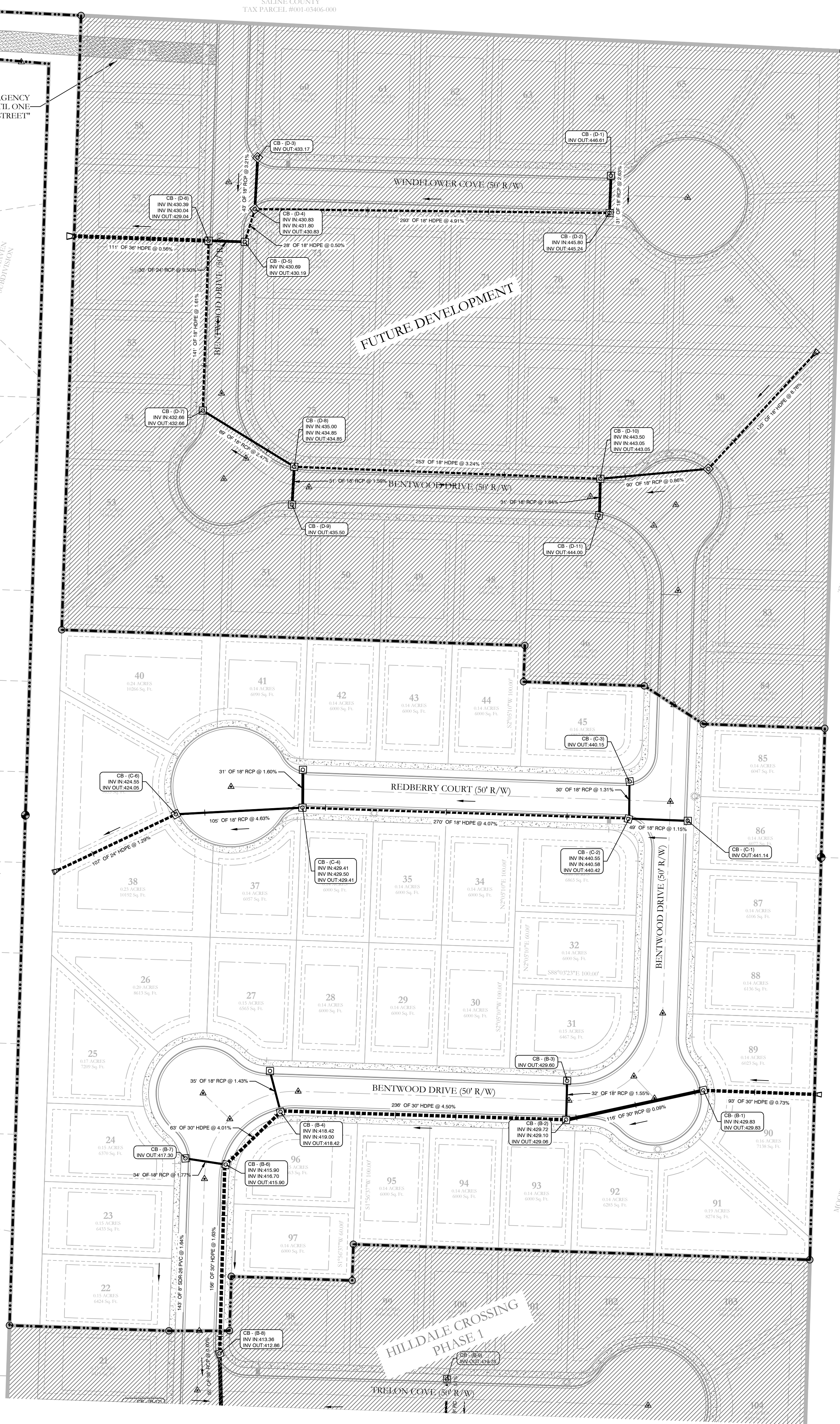


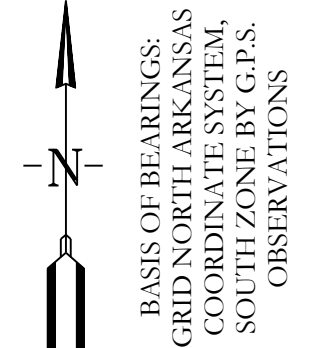
BOSSHART MARGARET
ALANNA S & KIMBERLY C.
SALINE COUNTY
TAX PARCEL #001-03406-000

LOT 59 RESERVED FOR TEMPORARY EMERGENCY VEHICLE ACCESS FROM RUDOLPH LANE UNTIL ONE STUB STREET OPENS TO A PUBLIC ACCESS STREET



TUCKER CREEK & MEGAN
SALINE COUNTY
TAX PARCEL #001-03404-002

MOORE REDD LAGUE
SALINE COUNTY
TAX PARCEL #001-03412-004



DRAINAGE AS-BUILTS HILLDALE CROSSING PHASE 2 A SUBDIVISION IN SALINE COUNTY, ARKANSAS



HOPE CONSULTING
ENGINEERS - SURVEYORS

117 S. Market Street,
Benton, Arkansas 72015
PH. (501)315-2626
FAX (501) 315-0024
www.hopeconsulting.com

FOR USE AND BENEFIT OF: HAVENS DEVELOPMENT, LLC		
DRAINAGE AS-BUILTS PLAN HILLDALE CROSSING PHASE 2 A SUBDIVISION IN SALINE COUNTY, ARKANSAS		
DATE: 05/10/2023	C.A.D. BY: BJOHNSON	DRAWING NUMBER: 20-0169
REVISED:	CHECKED BY:	SCALE: 1"=50'
500	01S	14W 0 03 330 62 1762

K:\CAD PROJECTS\2020\HILLDALE CROSSING\PHASE 2\HILLDALE CROSSING PHASE 2 AS-BUILTS 15-05-2023.DWG