

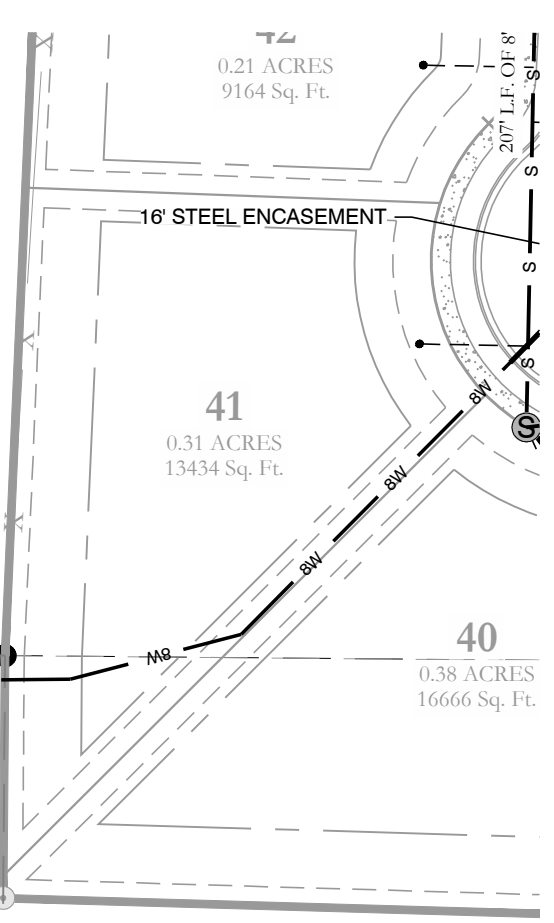
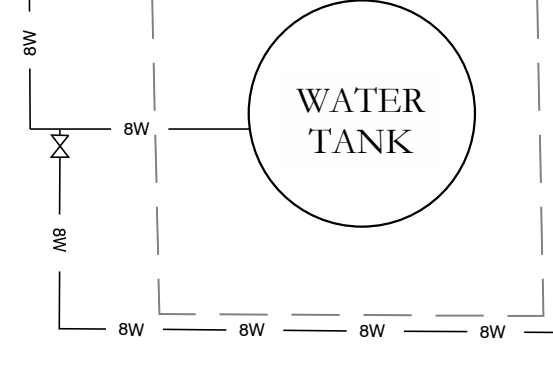
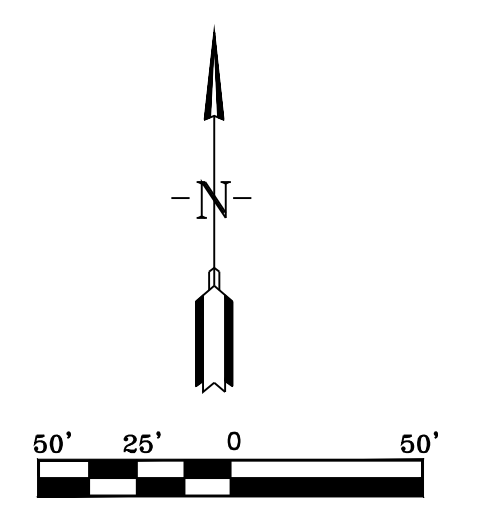
TRACT B
DRAINAGE & UT
EASEMENT

PROPOSED
DETENTION
AREA (DRY)

LOMBARD HEIGHTS
PHASE 1

TRACT A
2.13 ACRES
95485 Sq. Ft.

DETENTION AREA



WATER LEGEND:

	2" BLOW OFF
	WATER MAIN
	GATE VALVE
	REDUCER
	FIRE HYDRANT
	DOUBLE WATER SERVICE
	SINGLE WATER SERVICE

NOTE:
ALL FIRE HYDRANT LEADERS HAVE A GATE VALVE BETWEEN MAIN AND FIRE HYDRANT.

TYPICAL FIRE HYDRANT:

FIRE HYDRANT
(2 TO 6 FEET FROM
EDGE OF PAVEMENT)

SEWER LEGEND:

	SEWER SERVICE
	SEWER MAIN
	SEWER MANHOLE

NOTE:
USE SDR-26 PVC SEWER PIPE EXCEPT WHERE DUCTILE IRON PIPE REQUIRED FOR COVER. USE DUCTILE IRON PIPE WHERE 3" MINIMUM COVE CANNOT BE MAINTAINED.

CONTRACTOR IS RESPONSIBLE FOR LOCATING ALL BURIED UTILITIES PRIOR TO CONSTRUCTION.

HOPE CONSULTING
ENGINEERS - SURVEYORS

117 S. Market Street,
Benton, Arkansas 72015
PH. (501)315-2626
FAX (501) 315-0024
www.hopeconsulting.com

FOR USE AND BENEFIT OF:
LOMBARD HEIGHTS

WATER & SEWER AS-BUILTS
LOMBARD HEIGHTS, PHASE 2
A SUBDIVISION IN THE CITY OF BRYANT, SALINE COUNTY, ARKANSAS

DATE: 06/20/2023	C.A.D. BY: B. JOHNSON	DRAWING NUMBER:
REVISED:	CHECKED BY:	20-1388
SHEET:	SCALE: AS SHOWN	

500 01S 14W 16 201 62 128