

FRONT ELEVATION-% OF AREA MATERIALS LISTED

1. TOP-CHARCOAL COLOR -METAL PANELS WITH SINE WAVE=4,683 SF
2. RED COLOR -FLUSH METAL PANELS =2,941 SF
3. BLUE COLOR- GLASS AND DOORS=620 SF
4. DARK GRAY COLOR - EIFS TYPE STUCCO=2,964 SF
5. BASE-CHARCOAL COLOR -SPLIT FACE BLOCK=990 SF

TOTAL SF FRONT ELEVATION=12,198 SF
 CHARCOAL COLOR SINE WAVE METAL =38% OF AREA
 RED COLOR FLUSH METAL PANEL= 24% OF AREA
 GLASS= 6.0% OF AREA

**SIDE ELEVATIONS -% OF AREA MATERIALS LISTED
 EAST AND WEST ELEVATIONS ARE IDENTICAL BUT MIRRORED**

1. TOP-CHARCOAL COLOR -METAL PANELS WITH SINE WAVE=1,772 SF
2. RED COLOR -FLUSH METAL PANELS = 778 SF
3. LIGHT GRAY COLOR - EIFS TYPE STUCCO=1328 SF
5. BASE-CHARCOAL COLOR -SPLIT FACE BLOCK=443 SF

TOTAL SF SIDE ELEVATION=4,321 SF
 TOP-CHARCOAL SINE WAVE METAL =41% OF AREA
 RED COLOR FLUSH METAL PANEL = 18.0% OF AREA

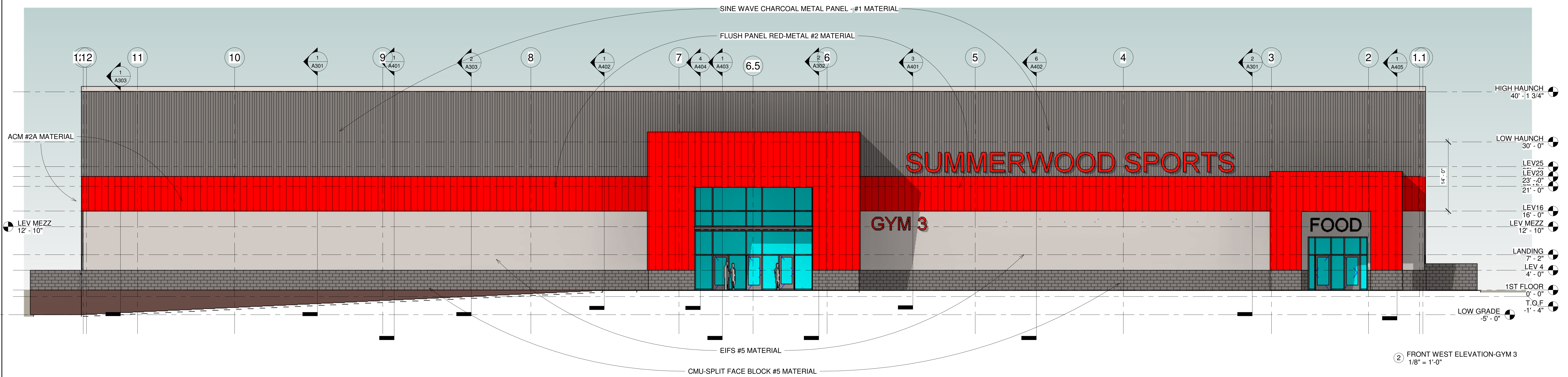
EXTERIOR MATERIALS LISTED FROM TOP OF BUILDING TO FLOOR-ALL METAL SIDING HAS CONCEALED FASTENERS

1. TOP-CHARCOAL COLOR -METAL PANELS WITH SINE WAVE AND W/CONCEALED FASTENERS AT TOP OF WALL
2. RED COLOR WALL STRIPE -FLUSH METAL PANELS W/CONCEALED FASTENERS AT 16' TO 23' ABOVE FLR.
3. RED COLOR AT COVERED ENTRY FEATURES-FLUSH METAL PANELS W/CONCEALED FASTENERS
4. BLUE COLOR=INSULATED GLASS AND STOREFRONT TYPE DOORS
5. LIGHT GRAY COLOR - EIFS TYPE STUCCO-FROM 4'-0" TO 16' ABOVE FLR.
6. BASE-CHARCOAL COLOR -SPLIT FACE BLOCK AT BASE OF WALL TO 4'-0" ABOVE FLR.
7. LIGHT GRAY COLOR-PAINTED METAL EXIT DOORS

**REAR ELEVATION -% OF AREA MATERIALS LISTED
 RECESSED MATERIALS ARE COUNTED AS SF**

1. TOP-CHARCOAL COLOR -METAL PANELS WITH SINE WAVE=1070 SF
4. DARK GRAY COLOR - EIFS TYPE STUCCO=2128 SF
5. BASE-CHARCOAL COLOR -SPLIT FACE BLOCK=418 SF

TOTAL SF REAR ELEVATION=3616 SF
 TOP-CHARCOAL SINE WAVE METAL =29.5% OF AREA



② FRONT WEST ELEVATION-GYM 3
 1/8" = 1'-0"

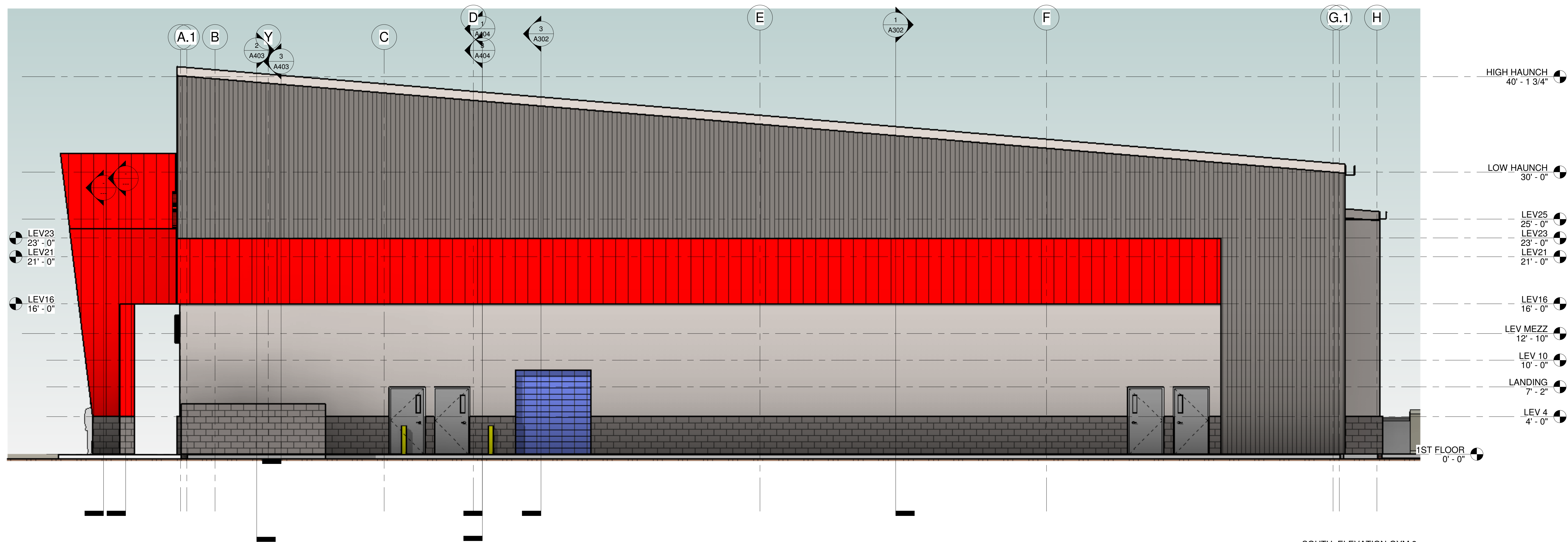
REVISIONS	DATE	NO.	NO.	NO.	NO.	NO.	NO.

andrew hicks | architect
AHA
 333 W. Poplar
 Fayetteville, Arkansas 72703
 O - 479-332-5050
 M - 501-680-0789
 www.andrewhicksarchitect.com

GYM #3
 AND RELATED SITE WORK
 FOR
 SUMMERWOOD PARTNERS
 VERNIA OFFICE PARK, BRYANT PARKWAY
 BRYANT, ARKANSAS

ARCHITECT OF RECORD
 ANDREW HICKS ARCHITECT INC.
 ISSUE DATE: 8/29/2023
 ELEVATIONS-GYM 3

A200



1 SOUTH ELEVATION-GYM 3
3/16" = 1'-0"

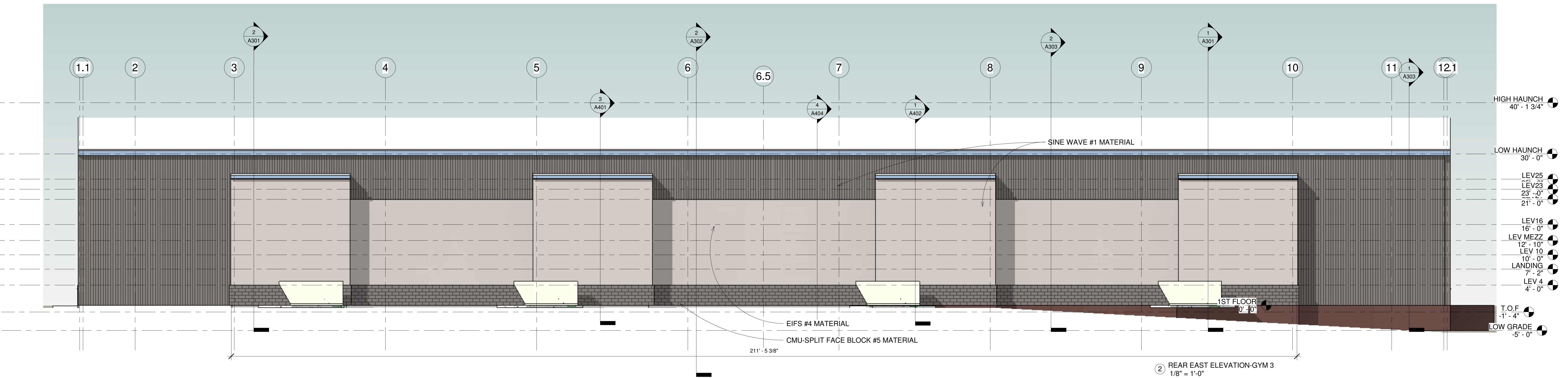
EXTERIOR MATERIALS LISTED FROM TOP OF BUILDING TO FLOOR-ALL METAL SIDING HAS CONCEALED FASTENERS

1. TOP-CHARCOAL COLOR -METAL PANELS WITH SINE WAVE AND W/CONCEALED FASTENERS AT TOP OF WALL
2. RED COLOR WALL STRIPE -FLUSH METAL PANELS W/CONCEALED FASTENERS AT 16' TO 23' ABOVE FLR.
3. RED COLOR AT COVERED ENTRY FEATURES-FLUSH METAL PANELS W/CONCEALED FASTENERS
4. BLUE COLOR=INSULATED GLASS AND STOREFRONT TYPE DOORS
5. LIGHT GRAY COLOR - EIFS TYPE STUCCO-FROM 4'-0" TO 16' ABOVE FLR.
6. BASE-CHARCOAL COLOR -SPLIT FACE BLOCK AT BASE OF WALL TO 4'-0" ABOVE FLR.
7. LIGHT GRAY COLOR-PAINTED METAL EXIT DOORS

**REAR ELEVATION -% OF AREA MATERIALS LISTED
RECESSED MATERIALS ARE COUNTED AS SF**

1. TOP-CHARCOAL COLOR -METAL PANELS WITH SINE WAVE=3,690 SF
2. DARK GRAY COLOR - EIFS TYPE STUCCO=3,189 SF
3. BASE-CHARCOAL COLOR -SPLIT FACE BLOCK=848 SF

TOTAL SF REAR ELEVATION=7,727 SF
TOP-CHARCOAL SINE WAVE METAL =47.7% OF WALL AREA



2 REAR EAST ELEVATION-GYM 3
1/8" = 1'-0"

REVISIONS	DATE	NO.	NO.	NO.	NO.	NO.	NO.

andrew hicks | architect
AHA
 333 W. Poplar
 Fayetteville, Arkansas 72703
 O - 479.332.5050
 M - 501.680.0789
 www.andrewhicksarchitect.com

8/29/2023

GYM #3
 AND RELATED SITE WORK
 FOR
 SUMMERWOOD PARTNERS
 VERNIA OFFICE PARK, BRYANT PARKWAY
 BRYANT, ARKANSAS

ELEVATIONS-GYM 3

ARCHITECT OF RECORD
 ANDREW HICKS ARCHITECT INC.
 ISSUE DATE: 8/29/2023
A201