

BOSSHART MARGARET
ALANNA S & KIMBERLY C
SALINE COUNTY
TAX PARCEL #001-03406-000

NE CORNER
E 1/2 S 1/2 NW 1/4 SE 1/2
SECTION 03, T-01-S, R-14-W

*LOT 59 RESERVED FOR TEMPORARY EMERGENCY
VEHICLE ACCESS FROM RUDOLPH LANE UNTIL ONE
STUB STREET OPENS TO A PUBLIC ACCESS STREET*

NORTH HAVEN
SUBDIVISION

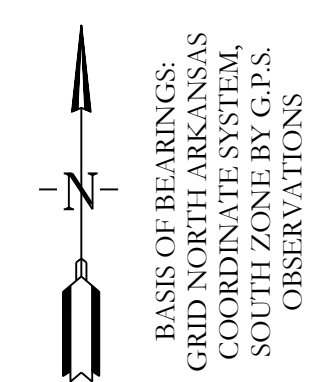
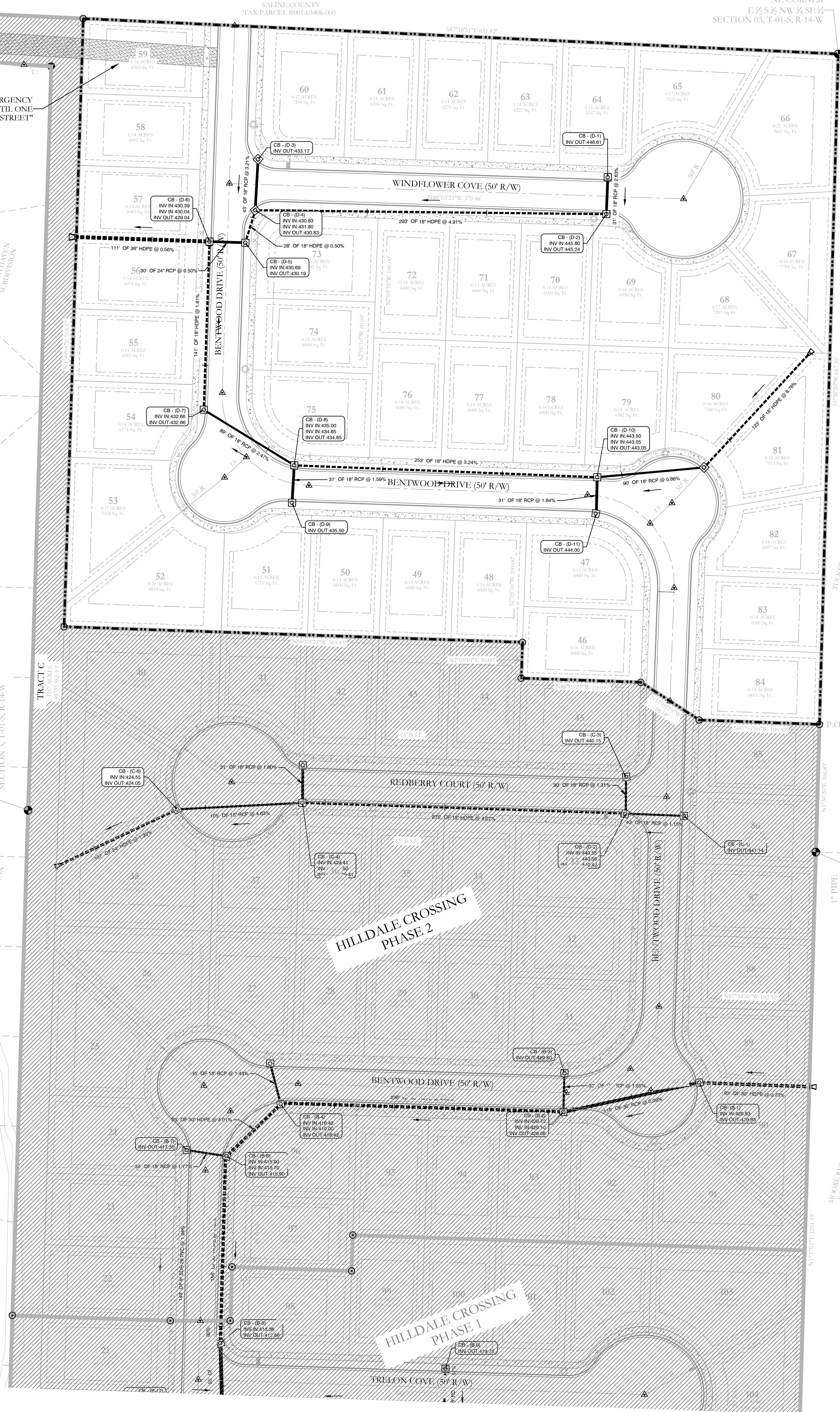
SW CORNER 1/2 NW 1/4 SE 1/4
SECTION 3, T-01-S, R-14-W

NORTH HAVEN
SUBDIVISION

TUCKER GREEN MORGAN
SALINE COUNTY
TAX PARCEL #001-03404-002

NE CORNER 1/2 SW 1/4 SE 1/4
SECTION 3, T-01-S, R-14-W

MEKBER DEBA CALLE
SALINE COUNTY
TAX PARCEL #001-03412-004



BASE OF BEARINGS:
GRID NORTH ARKANSAS
COORDINATE SYSTEM
SOUTH ZONE BY G.P.S.
OBSERVATIONS

DRAINAGE AS-BUILTS HILDALE CROSSING PHASE 2 A SUBDIVISION IN SALINE COUNTY, ARKANSAS



HOPE CONSULTING ENGINEERS - SURVEYORS 117 S. Market Street, Benton, Arkansas 72015
PH. (501) 315-2626 FAX (501) 315-0024 www.hopeconsulting.com

FOR USE AND BENEFIT OF: HAVENS DEVELOPMENT, LLC			
DRAINAGE AS-BUILT'S PLAN HILDALE CROSSING PHASE 2 A SUBDIVISION IN SALINE COUNTY, ARKANSAS			
DATE:	09/27/2023	C.A.D. BY:	BJOHNSON
REVISION:		CHECKED BY:	
500	01S	14W	0 03 330 62 1762
DRAWING NUMBER: 20-0169		SCALE: 1"=50'	

LAND PROJECTS 3040 E. BENTON RD. #200 BENTON AR 72015 TEL: 501-315-2626 FAX: 501-315-0024