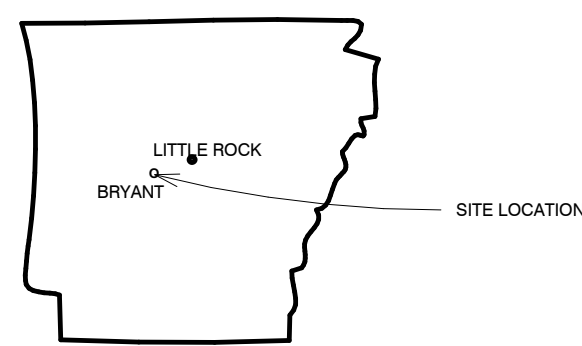


① FRONT WEST ELEVATION-GYM 3-TITLE
1/8" = 1'-0"



APPROXIMATE SITE BOUNDARY

SITE AREA MAP



STATE MAP

APPROXIMATE PROJECT LOCATION

GYM #3
SUMMERWOOD PARTNERS
VERNIA OFFICE PARK, BRYANT PARKWAY
BRYANT, ARKANSAS

ISSUED 8/29/2023

NOT FOR CONSTRUCTION

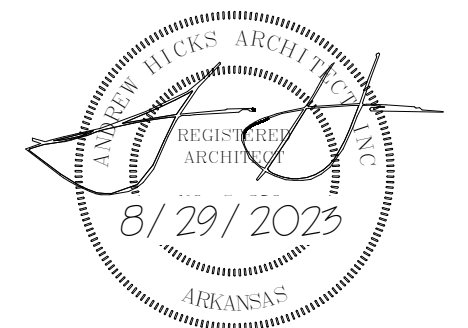
andrew hicks | architect
AHA

600 N Mission Blvd.
Fayetteville, Arkansas 72701

voice - 479.332.5050
mob - 501.680.0789
www.andrehicksarchitect.com

I HEREBY CERTIFY THAT THESE PLANS AND SPECIFICATIONS HAVE BEEN PREPARED BY ME OR UNDER MY SUPERVISION. I FURTHER CERTIFY THAT TO THE BEST OF MY KNOWLEDGE THESE PLANS AND SPECIFICATIONS ARE AS REQUIRED BY LAW AND IN COMPLIANCE WITH THE ARKANSAS FIRE PREVENTION CODE FOR THE STATE OF ARKANSAS

ANDREW E. HICKS, ARCHITECT INC
ARKANSAS REGISTRATION NO. C-250



CODE DATA

SUMMERWOOD SPORTS-GYM #3
PRACTICE AND TOURNAMENT GYMNASIUM
CHRISTY DRIVE, BRYANT, AR

DESIGN DATA
BUILDING CODES
INTERNATIONAL BUILDING CODE (IBC) 2021
ARKANSAS FIRE PREVENTION CODE (AFPC) 2021 EDITION

GENERAL CODES
SEISMIC USE GROUP 2 2021 IBC
SEISMIC DESIGN CATEGORY "C" AFPC REVISIONS

SALINE COUNTY - BUILDING LOCATION

HANDICAPPED GUIDELINES AND CODES
AMERICAN DISABILITIES ACT (ADA) 2010 EDITION
ARKANSAS ARCHITECTURAL BARRIERS ACT ACT 122-1967
ARKANSAS STATE BUILDING AUTHORITY SECTION 3-600
1979 HANDICAPPED ACCESSIBILITY STANDARDS

BUILDING CRITERIA / OCCUPANCY CLASSIFICATION

GYMNASIUM-GROUP "A-4" ASSEMBLY 39,168 SQUARE FEET TOTAL

BUILDING HAS A NON ACCESSIBLE MEZZANINE:
ALL BUILDING SERVICES ARE AVAILABLE ON THE MAIN FLOOR.

ALLOWABLE OCCUPANCY

- FIRST FLOOR - AREA - 33,860 SF
1. OCCUPANCY LOAD (NORMAL)
PLAYING COURTS SHALL BE LIMITED TO 15 PERSONS EACH
FOR PRACTICE AND TOURNAMENTS-
PLAYING COURTS ARE 30' X 60' WITH A 12' DEEP "RUN-OFF" AREA AROUND ALL COURTS-
NO VIEWING ALLOWED IN RUN-OFF AREAS
A 3' WIDE CONTINUOUS VIEWING AREA IS PROVIDED OUTSIDE THE "RUN-OFF" AREA
2. VOLLEYBALL PLAYING COURTS-6 PROVIDED-15 PERSONS EACH- OCCUPANCY = 90 PERSONS
3. VIEWING AREA AROUND ALL COURTS- 2,934 SF-5 SF/PER OCCUPANCY = 587 PERSONS
4. FOYER- 607 SF-15 SF/PER OCCUPANCY = 40 PERSONS
5. MENS REST RM AND DRESSING-630 SF - 50 SF/PER OCCUPANCY = 13 PERSONS
6. WOMENS REST RM AND DRESSING- 1276 SF-50 SF/PER OCCUPANCY = 18 PERSONS
7. CONCESSION SALES-KITCHEN-574 SF-200 SF/PER OCCUPANCY = 3 PERSONS
8. CONCESSION BREAKROOMS/TABLES-479 SF-15 SF/PER OCCUPANCY = 32 PERSONS
9. OUTSIDE CONCESSION -261 SF- 7 SF/PER OCCUPANCY = 37 PERSONS
10. STORAGE/MECH/UTIL -814 SF-300 SF/PER OCCUPANCY = 3 PERSONS

MEZZANINE FLOOR- AREA- 5,169 SF

11. MENS REST RM AND DRESSING-630 SF - 50 SF/PER OCCUPANCY = 13 PERSONS
12. WOMENS REST RM AND DRESSING-834 SF - 50 SF/PER OCCUPANCY = 19 PERSONS
13. BLEACHER VIEWING -18' PER SEATING OCCUPANCY = 192 PERSONS
14. LOUNGE AREAS WITH SEATS 1346 SF- 15 SF/PER OCCUPANCY = 90 PERSONS
11. OFFICE - 386 SF- 150 SF/PER OCCUPANCY = 3 PERSONS
10. STORAGE/MECH/UTIL -200 SF-300 SF/PER OCCUPANCY = 1 PERSONS

OCCUPANCY ON MAIN FLOOR =823

OCCUPANCY ON MEZZANINE=318

TOTAL A-4 ASSEMBLY SF=31,100 SF

TOTAL OCCUPANCY = 1,141 PERSONS

A-4 ASSEMBLY-EGRESS REQUIREMENTS

GYMNASIUM OCCUPANCY LIMITED BY CODE TO 1,141 PERSONS
GYMNASIUM SHALL BE FIRE SPRINKLERED.

GYMS SHALL HAVE TOTAL MAXIMUM OCCUPANCY 1,141 PERSONS
MAXIMUM SHALL BE POSTED ON ENTRY DOORS

1. CONSTRUCTION TYPE CLASSIFICATION
TYPE 2-B CONSTRUCTION IBC TABLE 601
ALLOWABLE BUILDING HEIGHT - 55' IBC TABLE 503
ALLOWABLE SQUARE FOOTAGE - UNLIMITED IBC TABLE 503

2. BUILDING HEIGHT
ACTUAL - 40'-0"
ALLOWED - 55'-0"

3. NUMBER OF STORIES
ACTUAL (2) 2ND FLOOR IS A PARTIAL MEZZANINE FOR VIEWING AND STORAGE
ALLOWED (2) TWO

4. HORIZONTAL SEPARATION - OPEN SPACE DISTANCE TO PROPERTY LINE OR ADJACENT BUILDING
NORTH - VARIES -40' MINIMUM
WEST - VARIES -40' MINIMUM
SOUTH - VARIES -40' MINIMUM
EAST - VARIES -40' MINIMUM

5. ALLOWABLE FLOOR AREA
GROUP A-4 - ALLOWED = UNLIMITED BY FULLY SPRINKLED BUILDING

6. ACTUAL BUILDING AREA 39,168 SF

7. EXIT DOORS- ASSUME MAX OCCUPANCY OF 1,141 PERSONS /4 = 286 PERSONS PER EXIT
286 PERSONS X .2 INCHES = 57.2 INCHES = REQUIRED EACH EXIT
(2) QTY 36" DOORS MINIMUM PROVIDED AT EACH EXIT = 72" WIDTH PROVIDED
(4) EXIT LOCATIONS PROVIDED

8. EXIT STAIRS FROM MEZZANINE- (2) EXIT STAIRS PROVIDED -318 PERSONS MEZZANINE OCCUPANCY
318/2 = 159 PERSONS EACH STAIR X .2 INCHES PER PERSON=32" REQUIRED/ 3'-6" MINIMUM WIDTH
REQUIRED.
MINIMUM 48" WIDE STAIRS PROVIDED AT 2 LOCATIONS

MEANS OF EGRESS * CODE REQUIREMENT PROVIDED
NUMBER OF EXITS 4 EXIT AREAS MIN. 4 LOCATIONS/2 DOORS AT EACH LOCATION -
FRONT GLASS DOORS ARE NOT REQUIRED AND
ARE NOT INCLUDED IN EXIT DOOR COUNT.

TRAVEL DISTANCE 250 FEET MAXIMUM 135 +30 +20 FEET= 185 MAXIMUM FROM MEZZ.

DEAD END CORRIDOR 20 FEET MAXIMUM 15' OR SHORTER INCLUDED

CORRIDOR WIDTH 44 INCH WIDE MINIMUM 48" PROVIDED

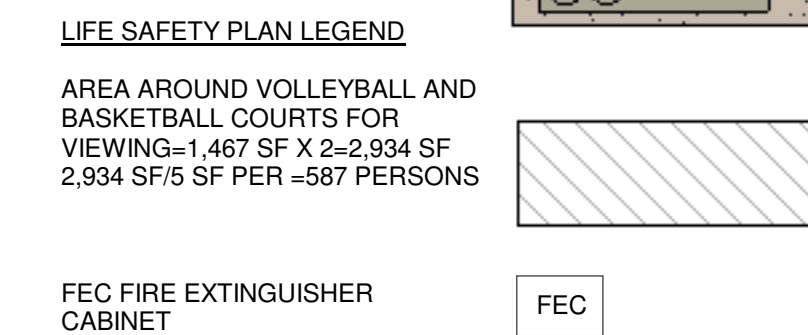
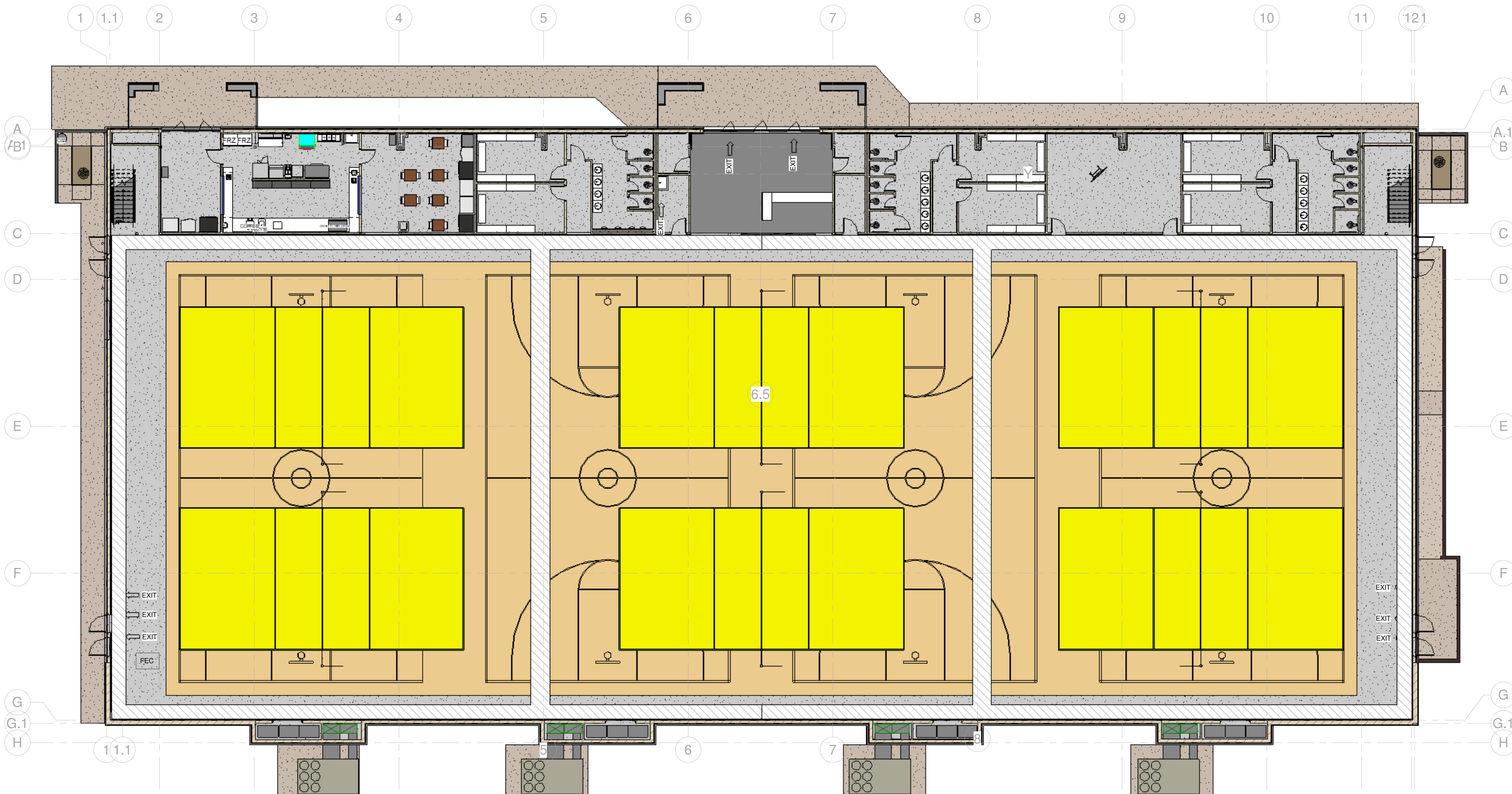
STAIR WIDTH 44 INCH WIDE MINIMUM 48" PROVIDED

(2) 48" STAIRS PROVIDED TO MEZZANINE

FIRE PROTECTION -AUTOMATIC SPRINKLER SYSTEM AND PORTABLE FIRE EXTINGUISHERS

BUILDING DESCRIPTION

- A 1 STORY METAL RIGID FRAME ROOF STRUCTURE WITH NON-COMBUSTIBLE METAL STUD WALLS
- THE BUILDING SHALL NOT BE FIRE PROTECTED.
- THE BUILDING SHALL BE FIRE SPRINKLED WITH AN AUTOMATIC SYSTEM.
- THE BUILDING SHALL BE USED AS GYMNASIUM WITH PLAYING COURTS FOR VOLLEYBALL AND BASKETBALL TYPE SPORTS ACTIVITIES.
- BUILDING TO BE CONSTRUCTED BY A GENERAL CONTRACTOR



1 FLOOR PLAN-LIFE SAFETY
3/32" = 1'-0"

TOTAL FIRST FLOOR BUILDING FLOOR AREA =33,860 SF
TOTAL MEZZANINE BUILDING FLOOR AREA = 5,308 SF
TOTAL BUILDING FLOOR AREA =39,168 SF

REVISIONS	DATE
NO.	
NO.	
NO.	
NO.	
NO.	
NO.	
NO.	

andrew hicks | architect

AHA

333 W. Poplar
Fayetteville, Arkansas 72703

O - 479-332-5050
M - 501-680-0789
www.andrewhicksarchitect.com

GYM #3
AND RELATED SITE WORK
FOR
SUMMERWOOD PARTNERS

8/29/2023

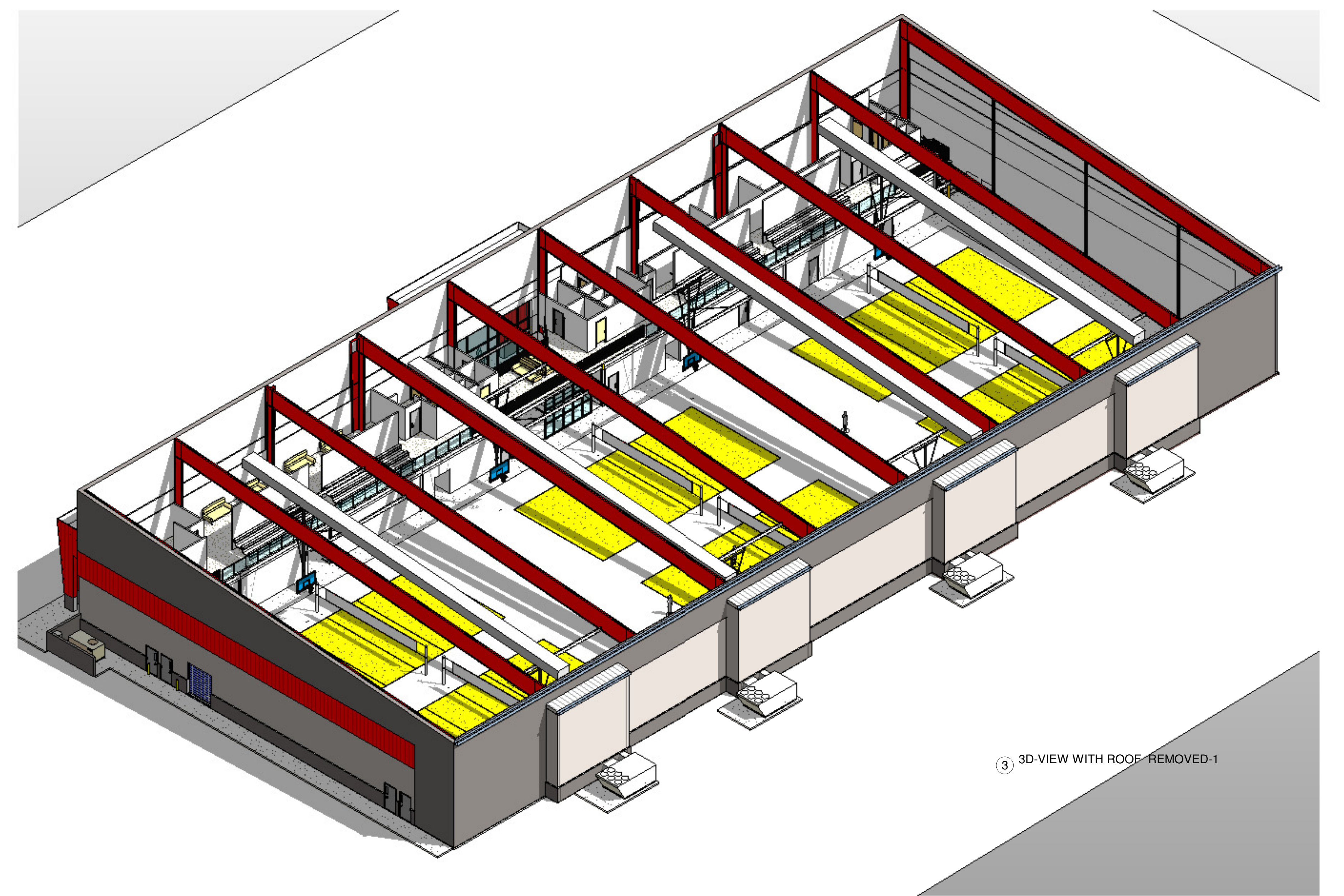
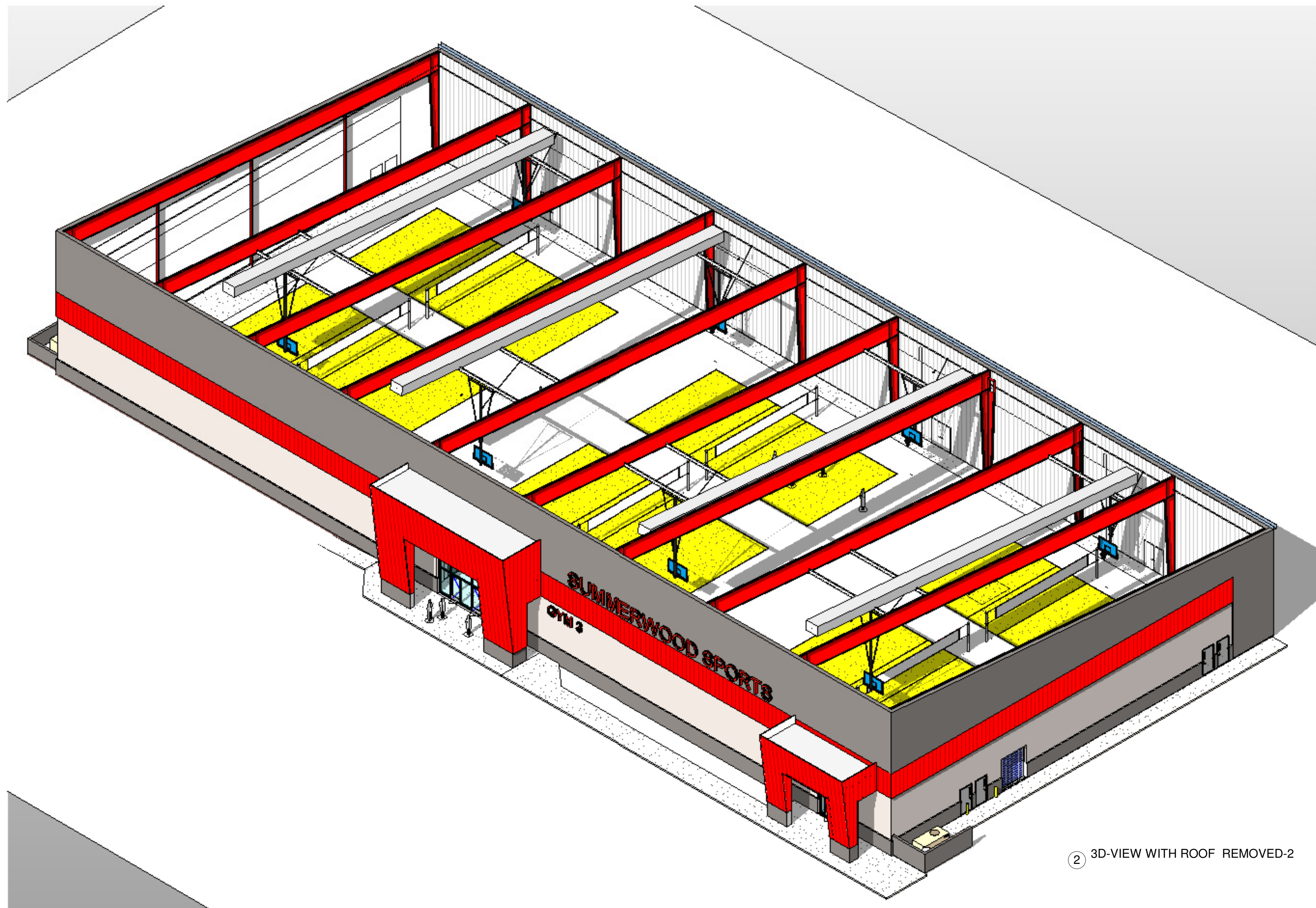
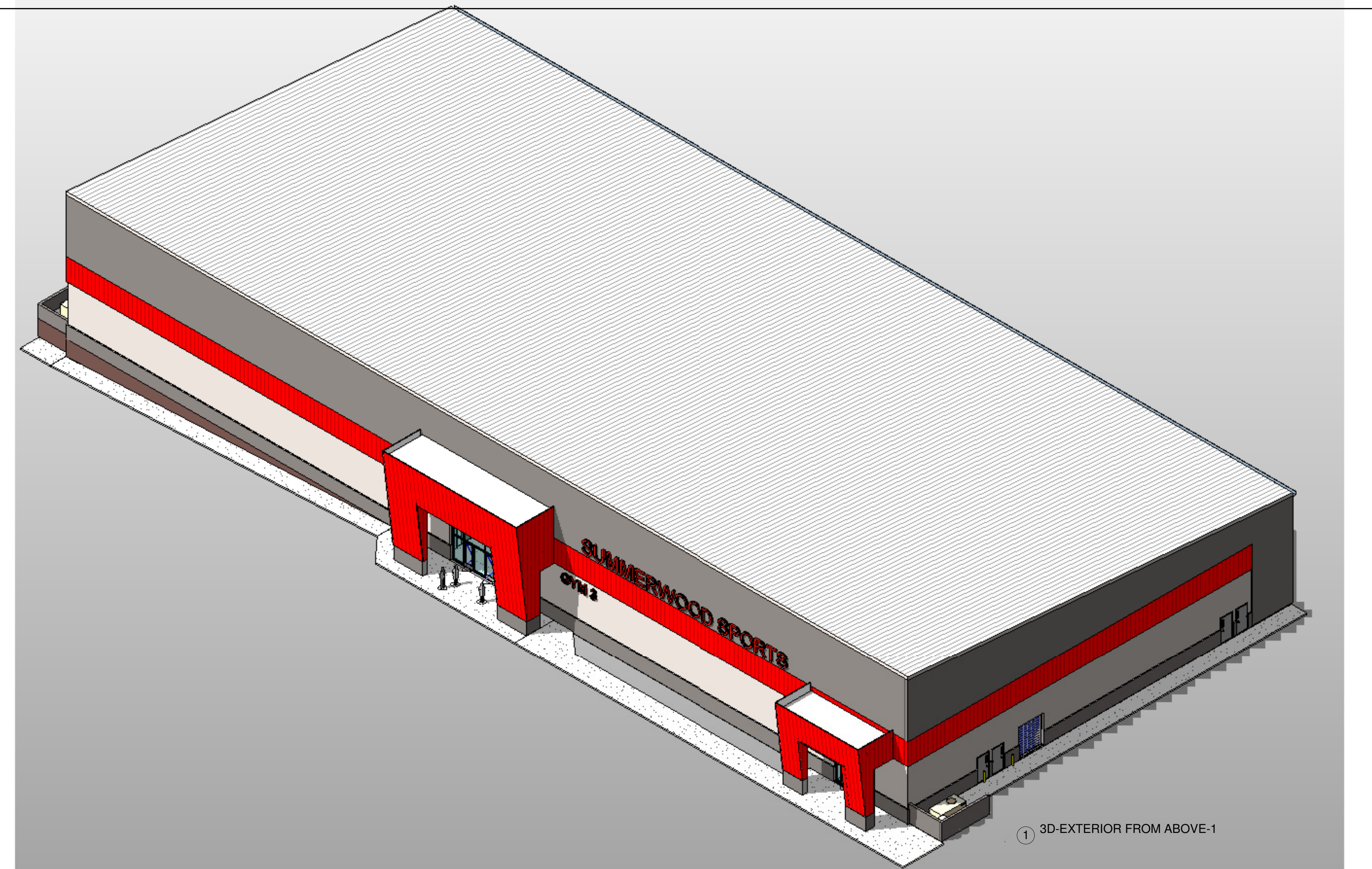
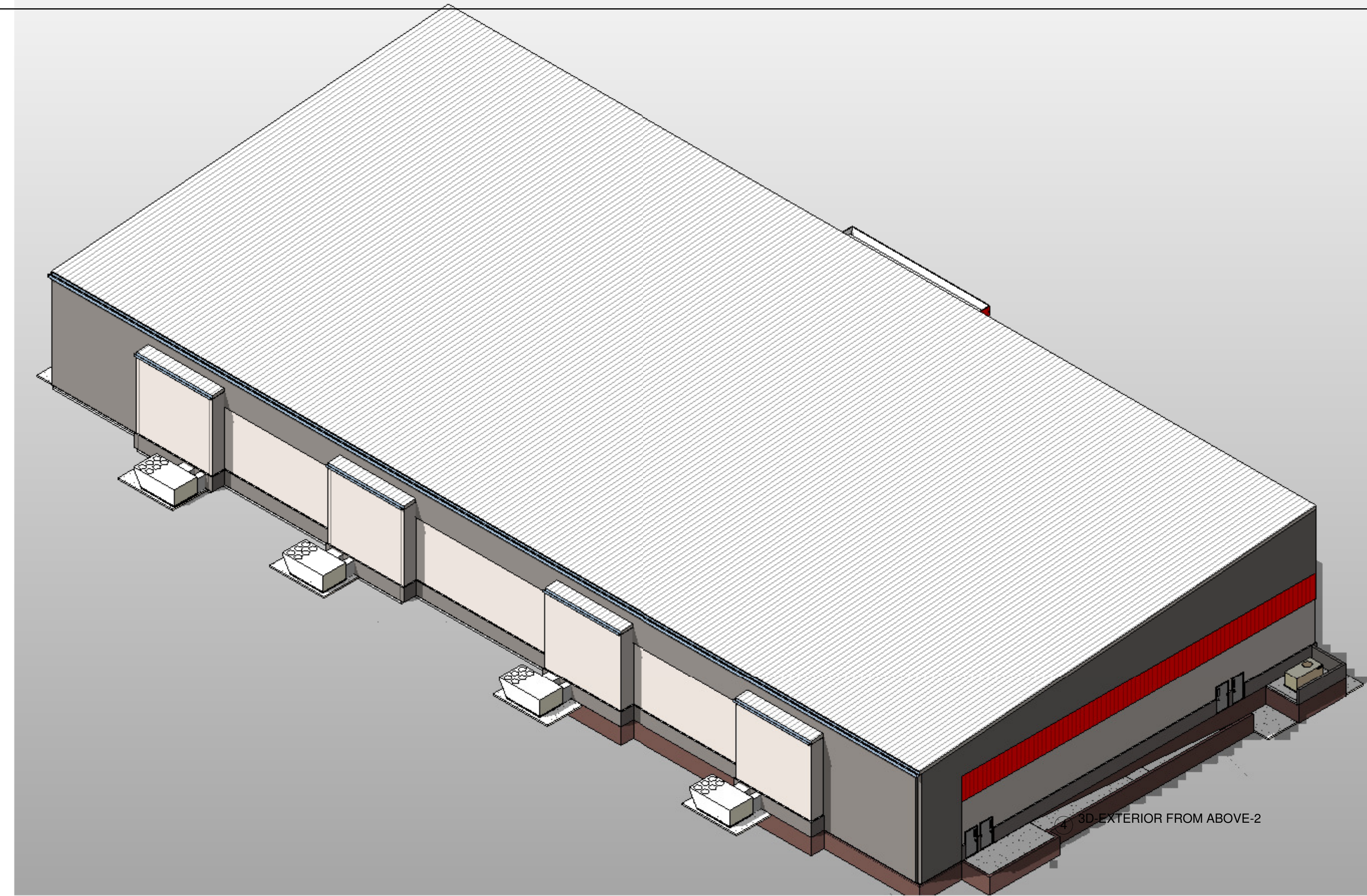
VERNIA OFFICE PARK, BRYANT PARKWAY
BRYANT, ARKANSAS

ARCHITECT OF RECORD
ANDREW HICKS ARCHITECT INC.

ISSUE DATE: 8/29/2023

CODE DATA AND LEGENDS

D-100



REVISIONS	DATE	NO.	NO.	NO.	NO.	NO.	NO.

andrew hicks | architect
AHA
 333 W. Poplar
 Fayetteville, Arkansas 72703
 O - 479-332-5050
 M - 501-680-0789
 www.andrewhicksarchitect.com

8/29/2023

GYM #3
 AND RELATED SITE WORK
 FOR
 SUMMERWOOD PARTNERS
 VERNIA OFFICE PARK, BRYANT PARKWAY
 BRYANT, ARKANSAS

3D ISOMETRIC VIEWS

ARCHITECT OF RECORD:
 ANDREW HICKS ARCHITECT INC.
 ISSUE DATE: 8/29/2023
A096



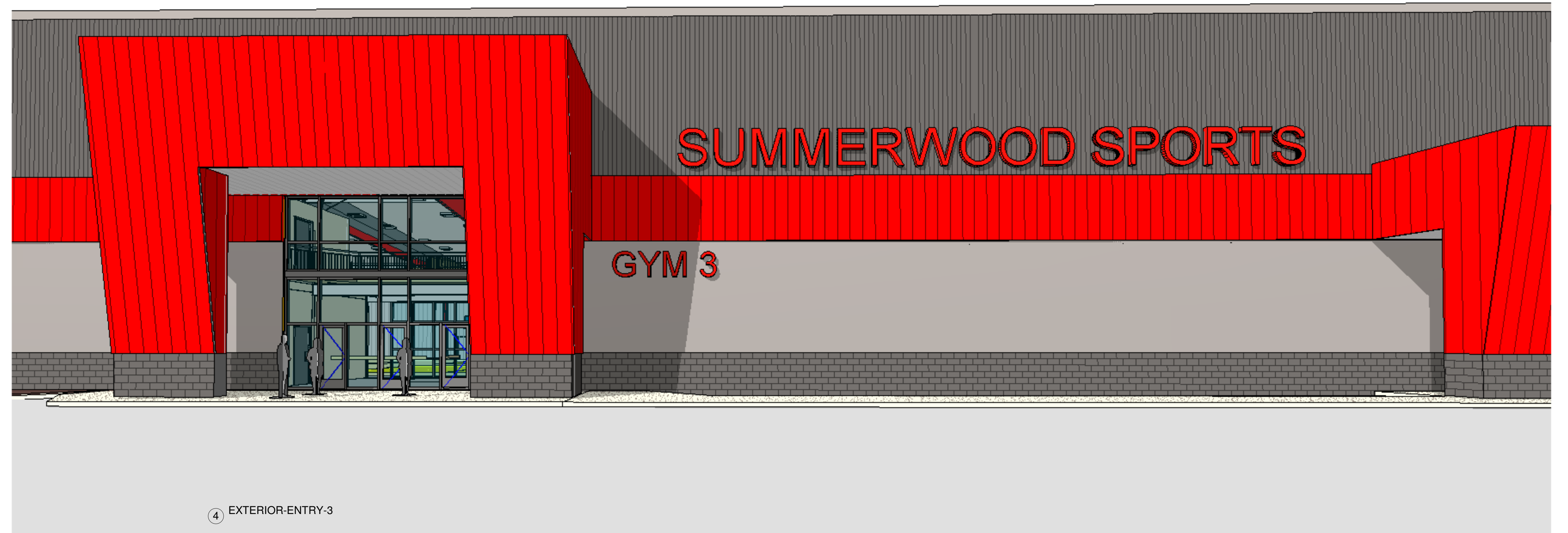
2 EXTERIOR-ENTRY-1



1 EXTERIOR- SIDE VIEW



3 EXTERIOR-ENTRY-2



4 EXTERIOR-ENTRY-3

REVISIONS	DATE
NO.	
NO.	
NO.	
NO.	
NO.	
NO.	
NO.	

andrew hicks | architect
AHA
 333 W. Poplar
 Fayetteville, Arkansas 72703
 O - 479-332-5050
 M - 501-680-0789
 www.andrewhicksarchitect.com

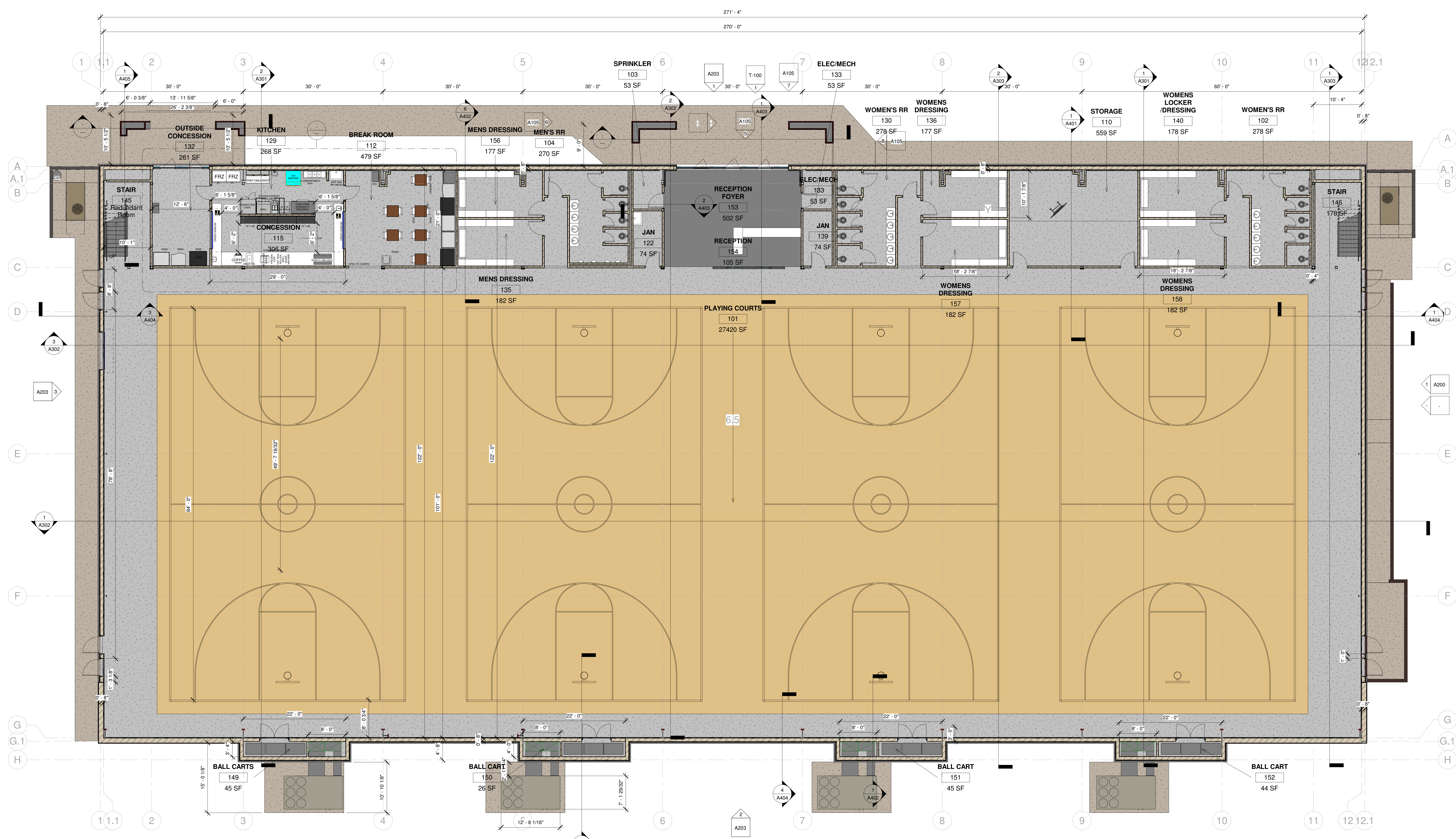
8/29/2023

GYM #3
 AND RELATED SITE WORK
 FOR
 SUMMERWOOD PARTNERS
 VERNIA OFFICE PARK, BRYANT PARKWAY
 BRYANT, ARKANSAS

3D EXTERIOR VIEWS

ARCHITECT OF RECORD:
 ANDREW HICKS ARCHITECT INC.
 ISSUE DATE: 8/29/2023

A097



1 FLOOR PLAN-DIMENSIONS
1/8" = 1'-0"

TOTAL FIRST FLOOR BUILDING FLOOR AREA = 33,736 SF
 TOTAL MEZZANINE BUILDING FLOOR AREA = 5,169 SF
 TOTAL BUILDING FLOOR AREA = 38,905 SF

REVISIONS	DATE	NO.	NO.	NO.	NO.	NO.	NO.

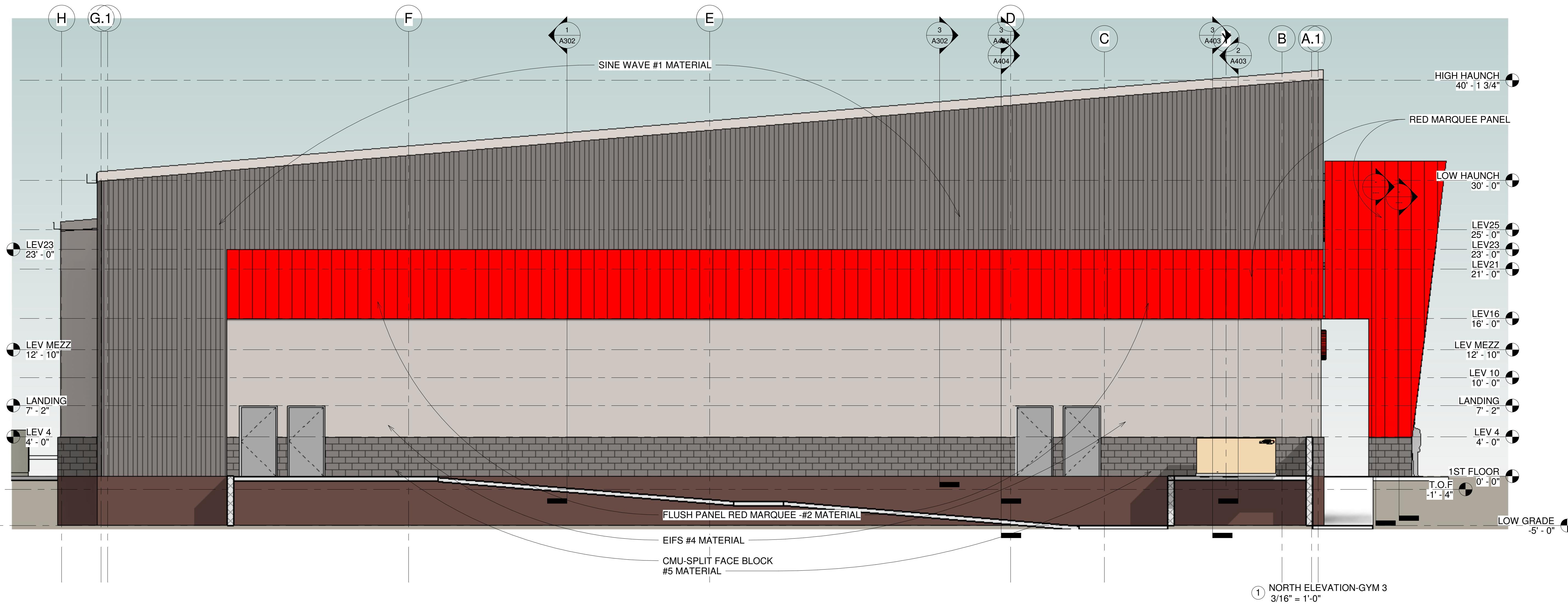
andrew hicks | architect
AHA
 333 W. Poplar
 Fayetteville, Arkansas 72703
 O - 479-332-5050
 M - 501-680-0789
 www.andrewhicksarchitect.com

8/29/2023

GYM #3
 AND RELATED SITE WORK
 FOR
 SUMMERWOOD PARTNERS
 VERNIA OFFICE PARK, BRYANT PARKWAY
 BRYANT, ARKANSAS

ARCHITECT OF RECORD
 ANDREW HICKS ARCHITECT INC.
 ISSUE DATE: 8/29/2023
 FLOOR PLAN- DIMENSIONED

A101



FRONT ELEVATION-% OF AREA MATERIALS LISTED

1. TOP-CHARCOAL COLOR -METAL PANELS WITH SINE WAVE=4,683 SF
 2. RED COLOR -FLUSH METAL PANELS =2,941 SF
 3. BLUE COLOR- GLASS AND DOORS=620 SF
 4. DARK GRAY COLOR - EIFS TYPE STUCCO=2,964 SF
 5. BASE-CHARCOAL COLOR -SPLIT FACE BLOCK=990 SF
- TOTAL SF FRONT ELEVATION=12,198 SF
CHARCOAL COLOR SINE WAVE METAL =38% OF AREA
RED COLOR FLUSH METAL PANEL= 24% OF AREA
GLASS= 6.0% OF AREA

SIDE ELEVATIONS -% OF AREA MATERIALS LISTED

EAST AND WEST ELEVATIONS ARE IDENTICAL BUT MIRRORED

1. TOP-CHARCOAL COLOR -METAL PANELS WITH SINE WAVE=1,772 SF
 2. RED COLOR -FLUSH METAL PANELS = 778 SF
 3. LIGHT GRAY COLOR - EIFS TYPE STUCCO=1328 SF
 5. BASE-CHARCOAL COLOR -SPLIT FACE BLOCK=443 SF
- TOTAL SF SIDE ELEVATION=4,321 SF
TOP-CHARCOAL SINE WAVE METAL =41% OF AREA
RED COLOR FLUSH METAL PANEL = 18.0% OF AREA

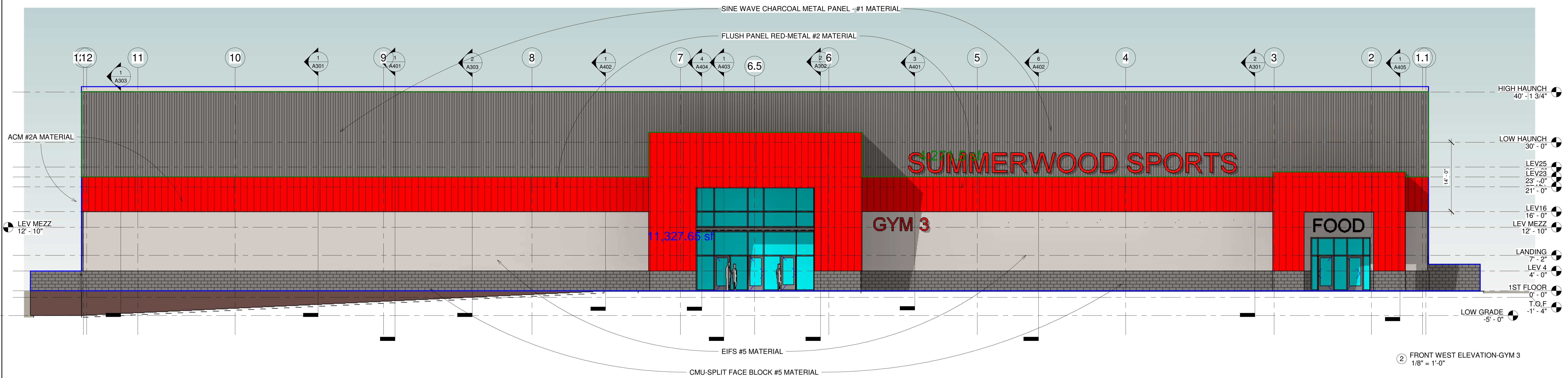
REAR ELEVATION -% OF AREA MATERIALS LISTED

- RECESSED MATERIALS ARE COUNTED AS SF
1. TOP-CHARCOAL COLOR -METAL PANELS WITH SINE WAVE=1070 SF
 4. DARK GRAY COLOR - EIFS TYPE STUCCO=2128 SF
 5. BASE-CHARCOAL COLOR -SPLIT FACE BLOCK=418 SF
- TOTAL SF REAR ELEVATION=3616 SF
TOP-CHARCOAL SINE WAVE METAL =29.5% OF AREA

Request for Non-standard building will be needed.
 Metal Siding with sine wave pattern may not exceed 30% of total area of any one facade.
 Front and Side elevations exceed that amount.
 Front elevation does not meet the requirement for windows and doors. (At least 20% of front facade total square footage)

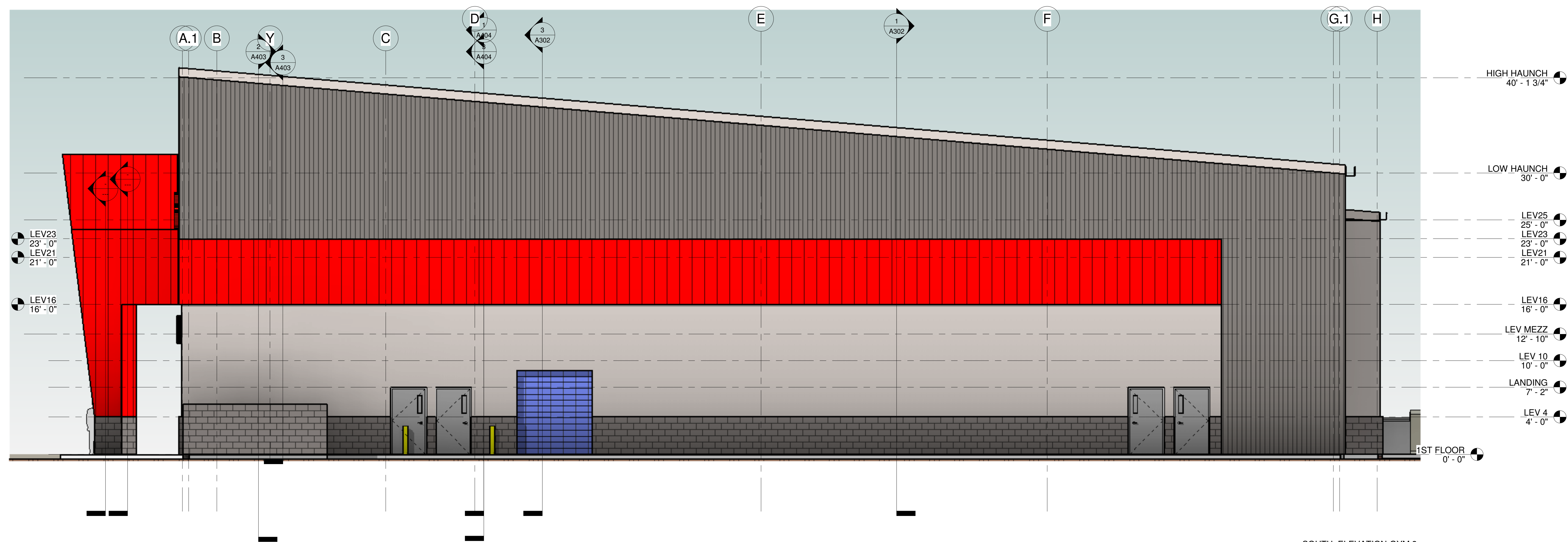
EXTERIOR MATERIALS LISTED FROM TOP OF BUILDING TO FLOOR-ALL METAL SIDING HAS CONCEALED FASTENERS

1. TOP-CHARCOAL COLOR -METAL PANELS WITH SINE WAVE AND W/CONCEALED FASTENERS AT TOP OF WALL
2. RED COLOR WALL STRIPE -FLUSH METAL PANELS W/CONCEALED FASTENERS AT 16' TO 23' ABOVE FLR.
3. RED COLOR AT COVERED ENTRY FEATURES-FLUSH METAL PANELS W/CONCEALED FASTENERS
4. BLUE COLOR=INSULATED GLASS AND STOREFRONT TYPE DOORS
5. LIGHT GRAY COLOR - EIFS TYPE STUCCO-FROM 4'-0" TO 16' ABOVE FLR.
6. BASE-CHARCOAL COLOR -SPLIT FACE BLOCK AT BASE OF WALL TO 4'-0" ABOVE FLR.
7. LIGHT GRAY COLOR-PAINTED METAL EXIT DOORS



② FRONT WEST ELEVATION-GYM 3
 1/8" = 1'-0"

REVISIONS NO. DATE NO. NO. NO. NO. NO. NO.	andrew hicks architect AHA 333 W. Poplar Fayetteville, Arkansas 72703 O - 479-332-5050 M - 501-680-0789 www.andrewhicksarchitect.com		8/29/2023	GYM #3 AND RELATED SITE WORK FOR SUMMERWOOD PARTNERS VERNIA OFFICE PARK, BRYANT PARKWAY BRYANT, ARKANSAS	ARCHITECT OF RECORD ANDREW HICKS ARCHITECT INC. ISSUE DATE: 8/29/2023	ELEVATIONS-GYM 3	A200
	333 W. Poplar Fayetteville, Arkansas 72703 O - 479-332-5050 M - 501-680-0789 www.andrewhicksarchitect.com		8/29/2023	GYM #3 AND RELATED SITE WORK FOR SUMMERWOOD PARTNERS VERNIA OFFICE PARK, BRYANT PARKWAY BRYANT, ARKANSAS	ARCHITECT OF RECORD ANDREW HICKS ARCHITECT INC. ISSUE DATE: 8/29/2023	ELEVATIONS-GYM 3	A200



1 SOUTH ELEVATION-GYM 3
3/16" = 1'-0"

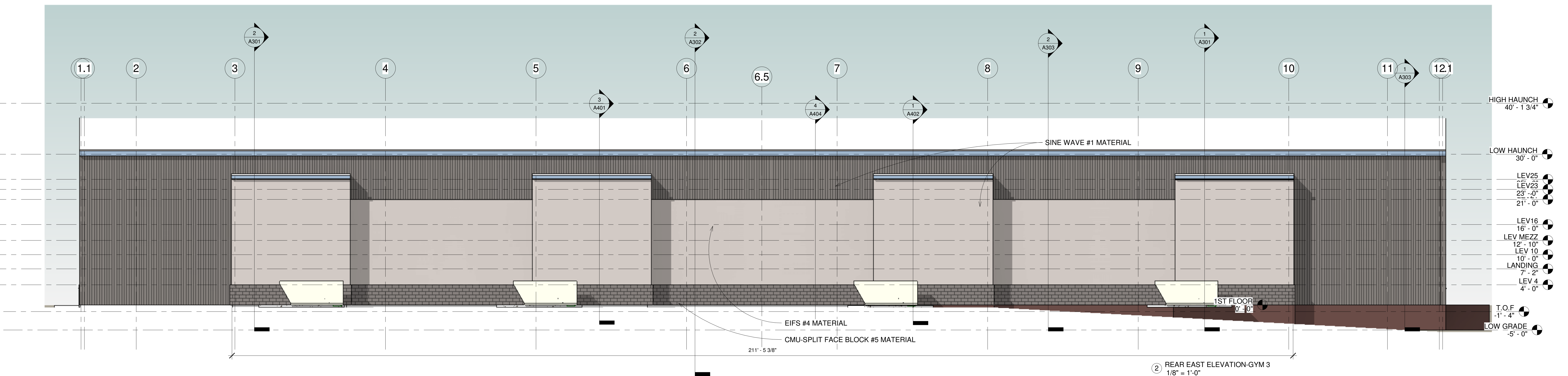
EXTERIOR MATERIALS LISTED FROM TOP OF BUILDING TO FLOOR-ALL METAL SIDING HAS CONCEALED FASTENERS

1. TOP-CHARCOAL COLOR -METAL PANELS WITH SINE WAVE AND W/CONCEALED FASTENERS AT TOP OF WALL
2. RED COLOR WALL STRIPE -FLUSH METAL PANELS W/CONCEALED FASTENERS AT 16' TO 23' ABOVE FLR.
3. RED COLOR AT COVERED ENTRY FEATURES-FLUSH METAL PANELS W/CONCEALED FASTENERS
4. BLUE COLOR=INSULATED GLASS AND STOREFRONT TYPE DOORS
5. LIGHT GRAY COLOR - EIFS TYPE STUCCO-FROM 4'-0" TO 16' ABOVE FLR.
6. BASE-CHARCOAL COLOR -SPLIT FACE BLOCK AT BASE OF WALL TO 4'-0" ABOVE FLR.
7. LIGHT GRAY COLOR-PAINTED METAL EXIT DOORS

**REAR ELEVATION -% OF AREA MATERIALS LISTED
RECESSED MATERIALS ARE COUNTED AS SF**

1. TOP-CHARCOAL COLOR -METAL PANELS WITH SINE WAVE=3,690 SF
2. DARK GRAY COLOR - EIFS TYPE STUCCO=3,189 SF
3. BASE-CHARCOAL COLOR -SPLIT FACE BLOCK=848 SF

TOTAL SF REAR ELEVATION=7,727 SF
TOP-CHARCOAL SINE WAVE METAL =47.7% OF WALL AREA



2 REAR EAST ELEVATION-GYM 3
1/8" = 1'-0"

REVISIONS	DATE	NO.	NO.	NO.	NO.	NO.	NO.

andrew hicks | architect
AHA
 333 W. Poplar
 Fayetteville, Arkansas 72703
 O - 479.332.5050
 M - 501.680.0789
 www.andrewhicksarchitect.com

8/29/2023

GYM #3
 AND RELATED SITE WORK
 FOR
 SUMMERWOOD PARTNERS
 VERNIA OFFICE PARK, BRYANT PARKWAY
 BRYANT, ARKANSAS

ELEVATIONS-GYM 3

ARCHITECT OF RECORD
 ANDREW HICKS ARCHITECT INC.
 ISSUE DATE: 8/29/2023

A201