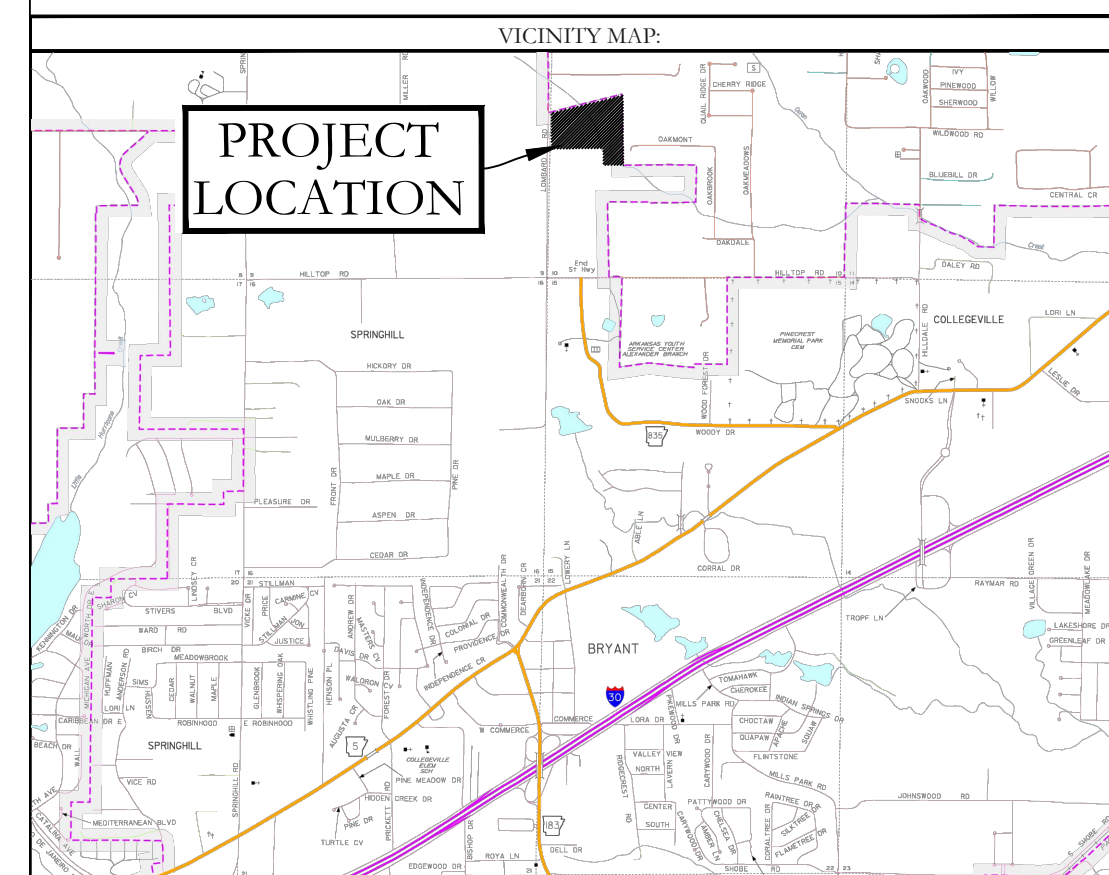


**SANITARY SEWER AND WATER AS-BUILTS**  
**ROMAN HEIGHTS SUBDIVISION PHASE 2**  
 IN THE CITY OF BRYANT, SALINE COUNTY, ARKANSAS



SEWER LEGEND:		WATER LEGEND:	
	SEWER SERVICE		GATE VALVE
	SEWER SERVICE		REDUCER
			WATER LINE
			FIRE HYDRANT
			DOUBLE WATER SERVICE
			SINGLE WATER SERVICE

NOTE: PROPOSED SEWER MAINS IS TO HAVE TRACER WIRE. ALSO A NON-BIODEGRADABLE TAPE IDENTIFYING THE LINE AS "SEWER" MUST BE BURIED IN THE TRENCH ABOVE THE SEWER MAINS.

NOTE: ALL FIRE HYDRANT LEADERS HAVE A GATE VALVE BETWEEN MAIN AND FIRE HYDRANT.



<b>HOPE CONSULTING</b> ENGINEERS - SURVEYORS		117 S. Market Street, Benton, Arkansas 72015 PH. (501)315-2626 FAX (501) 315-0024 www.hopeconsulting.com	
FOR USE AND BENEFIT OF: BULL DEVELOPMENT LLC			
WATER & SEWER AS-BUILTS PLAN ROMAN HEIGHTS SUBDIVISION PHASE 2 IN THE CITY OF BRYANT, SALINE COUNTY, ARKANSAS			
DATE:	09/23/2023	C.A.D. BY:	MD
REVISION:		CHECKED BY:	
500	01S	14W	0 10 300 62 1762
		SCALE: 1"=60'	DRAWING NUMBER: 17-0077

C:\LAND PROJECTS\2023\17-0077 ROMAN HEIGHTS\DWG\170077\_ROMAN HEIGHTS AS-BUILTS.PLT 08/28/2023