

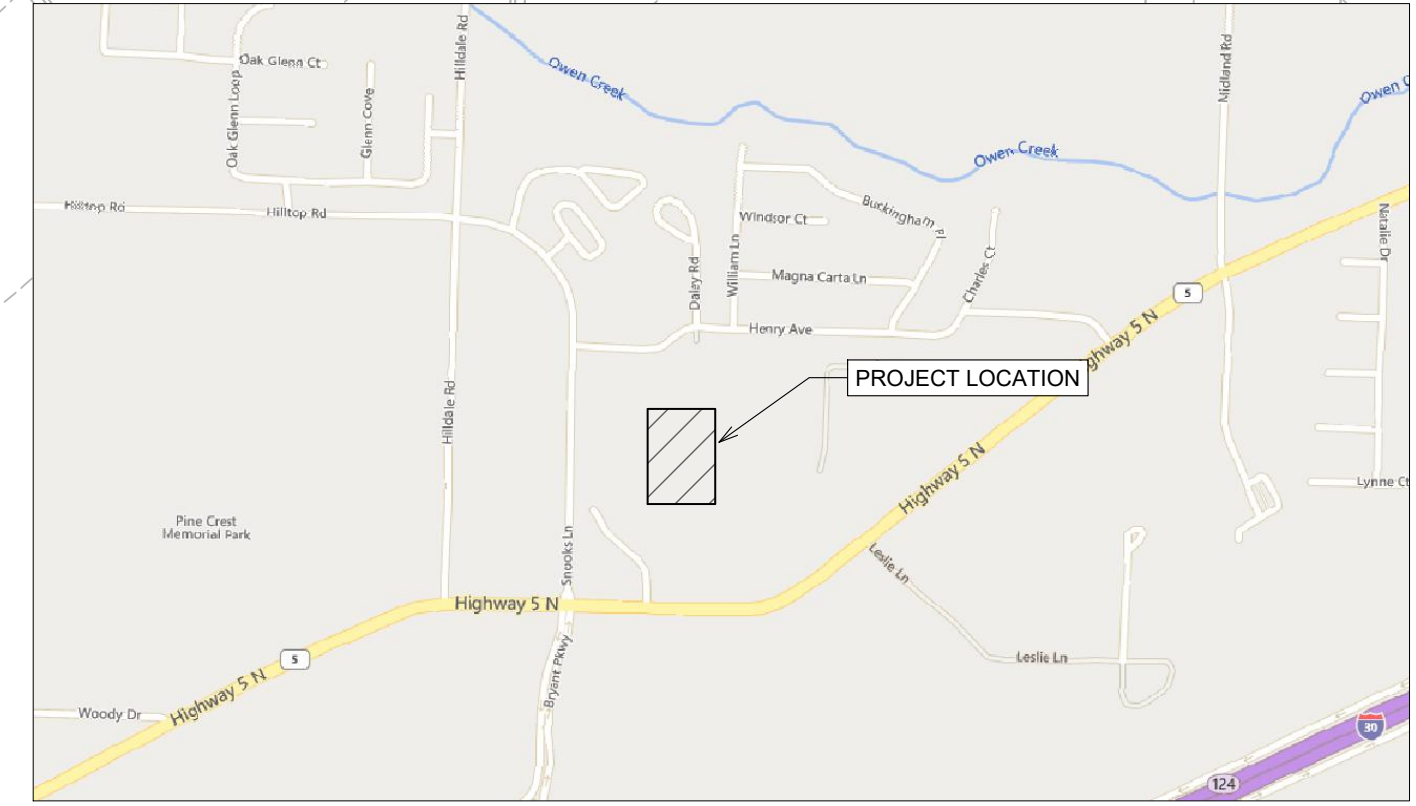
GENERAL CONSTRUCTION NOTES

- A. THE CONTRACTOR WILL BE HELD SOLELY RESPONSIBLE FOR DAMAGES OCCURRING TO ANY PROPERTY DURING THE CONSTRUCTION OF THIS PROJECT. SAID CONTRACTOR SHALL TAKE ALL NECESSARY PRECAUTIONS TO PREVENT PROPERTY DAMAGE.
- B. IN ACCORDANCE WITH GENERALLY ACCEPTED CONSTRUCTION PRACTICES, THE CONTRACTOR WILL SOLELY AND COMPLETELY BE RESPONSIBLE FOR CONDITIONS OF THE JOB SITE, INCLUDING SAFETY WORK. THIS REQUIREMENT WILL APPLY CONTINUOUSLY AND WILL NOT BE LIMITED TO NORMAL WORKING HOURS.
- C. THE DUTY OF BRYANT UTILITIES TO CONDUCT CONSTRUCTION INSPECTION REVIEWS OF THE CONTRACTOR'S PERFORMANCE IS NOT AN INSPECTION OR REVIEW OF THE ADEQUACY OF THE CONTRACTOR'S SAFETY MEASURES IN, ON, OR NEAR THE CONSTRUCTION SITE.
- D. ALL WATER AND SEWER IMPROVEMENTS SHALL BE CONSTRUCTED IN ACCORDANCE WITH THE LATEST REVISION TO THE CITY OF BRYANT'S WATER AND WASTEWATER (SANITARY SEWER) STANDARD SPECIFICATIONS.
- E. THE CONTRACTOR IS SPECIFICALLY CAUTIONED THAT THE LOCATION AND/OR ELEVATION OF EXISTING UTILITIES AS SHOWN ON THESE PLANS IS BASED ON RECORDS OF THE VARIOUS UTILITY COMPANIES AND, WHERE POSSIBLE, MEASUREMENTS TAKEN IN THE FIELD. THE INFORMATION IS NOT TO BE RELIED ON AS BEING EXACT OR COMPLETE. THE CONTRACTOR MUST CALL THE APPROPRIATE UTILITY COMPANY AT LEAST 48 HOURS BEFORE ANY EXCAVATION TO REQUEST EXACT FIELD LOCATION OF ALL UTILITIES. IT SHALL BE THE RESPONSIBILITY OF THE CONTRACTOR TO LOCATE ALL EXISTING UTILITIES WHICH CONFLICT WITH PROPOSED IMPROVEMENTS SHOWN ON THE PLAN.
- F. CONTRACTOR IS TO REMOVE AND DISPOSE OF ALL DEBRIS, RUBBISH, AND OTHER MATERIALS RESULTING FROM PREVIOUS AND CURRENT DEMOLITION OPERATIONS. DISPOSAL WILL BE IN ACCORDANCE WITH ALL LOCAL, STATE AND/OR FEDERAL REGULATIONS GOVERNING SUCH OPERATIONS.
- G. PRIOR TO INSTALLATION OF ANY UTILITIES, THE CONTRACTOR IS TO EXCAVATE, VERIFY AND CALCULATE ALL CROSSINGS AND INFORM ANY AND ALL UTILITIES OF ANY CONFLICTS PRIOR TO CONSTRUCTION.
- H. CONSTRUCTION SHALL NOT START ON ANY WATER UTILITY TIE-INS UNTIL APPROVAL IS GIVEN BY BRYANT UTILITIES. SAID CONTRACTOR SHALL NOT OPERATE ANY VALVE, HYDRANT, OR WATER UTILITY APPURTENANCE NOR SHALL HE ATTACH TO OR TAP ANY WATER UTILITY MAIN WITHOUT APPROVAL. THE CONTRACTOR SHALL BEAR THE COST AND CONSEQUENCE OF ANY DISRUPTION OF UTILITY OPERATION CAUSED BY CONSTRUCTION.
- I. FIBER OPTIC CABLE ON AND/OR ADJACENT TO THIS SITE WERE NOT LOCATED BY THE SURVEY AND ARE NOT SHOWN. IT IS THE RESPONSIBILITY OF THE CONTRACTOR TO LOCATE ANY FIBER OPTIC CABLES ASSOCIATED WITH THIS SITE AND TAKE ALL NECESSARY AND REQUIRED PRECAUTIONS TO PROTECT ANY EXISTING FIBER OPTIC CABLES. CONTRACTORS SHALL COORDINATE ALL EFFORTS WITH OWNER OF FIBER OPTIC CABLES OR THEIR DESIGNATED REPRESENTATIVE.
- J. THE CONTRACTOR IS RESPONSIBLE FOR CONTACTING "ONECALL" SERVICE TO MARK ALL UTILITIES PRIOR TO ANY DEMOLITION, EARTHWORK, OR UTILITY WORK ON THIS SITE.

SITE PLAN

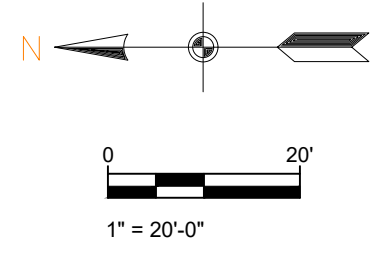
1. 64 PARKING SPACES PROVIDED INCLUDING 3 ADA ACCESSIBLE PARKING SPACES
2. ALL DIMENSIONS ARE TO THE BACK OF CURB AND/OR EDGE OF PAVEMENT
3. DAMAGE TO PUBLIC AND PRIVATE PROPERTY DUE TO HAULING OPERATIONS OR OPERATIONS OF CONSTRUCTION RELATED EQUIPMENT FROM A CONSTRUCTION SITE SHALL BE REPAIRED BY THE RESPONSIBLE PARTY PRIOR TO THE ISSUANCE OF A CERTIFICATE OF OCCUPANCY.
4. REPAIR, REPLACE, OR EXTEND EXISTING DAMAGED OR MISSING CURB AND GUTTER, SIDEWALK OR RAMPS WITHIN THE PUBLIC RIGHT OF WAY.
5. ALL SIGNAGE, PAVEMENT MARKING AND PARKING LOT STRIPING SHALL CONFORM TO REQUIREMENTS GIVEN IN MANUAL OF UNIFORM TRAFFIC CONTROL DEVICES (MUTCD). MUTCD REQUIRES THAT PARKING SPACES BE MARKED IN WHITE.

SCALE 1" = 20'

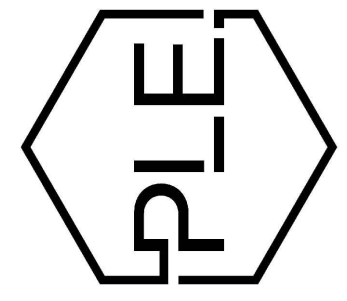


VICINITY MAP

SCALE 1" = 1000'



PHILLIP LEWIS ENGINEERING, INC.
Structural + Civil Consultants
23620 Interstate 30 | Bryant, Arkansas
PH: 501-350-9840

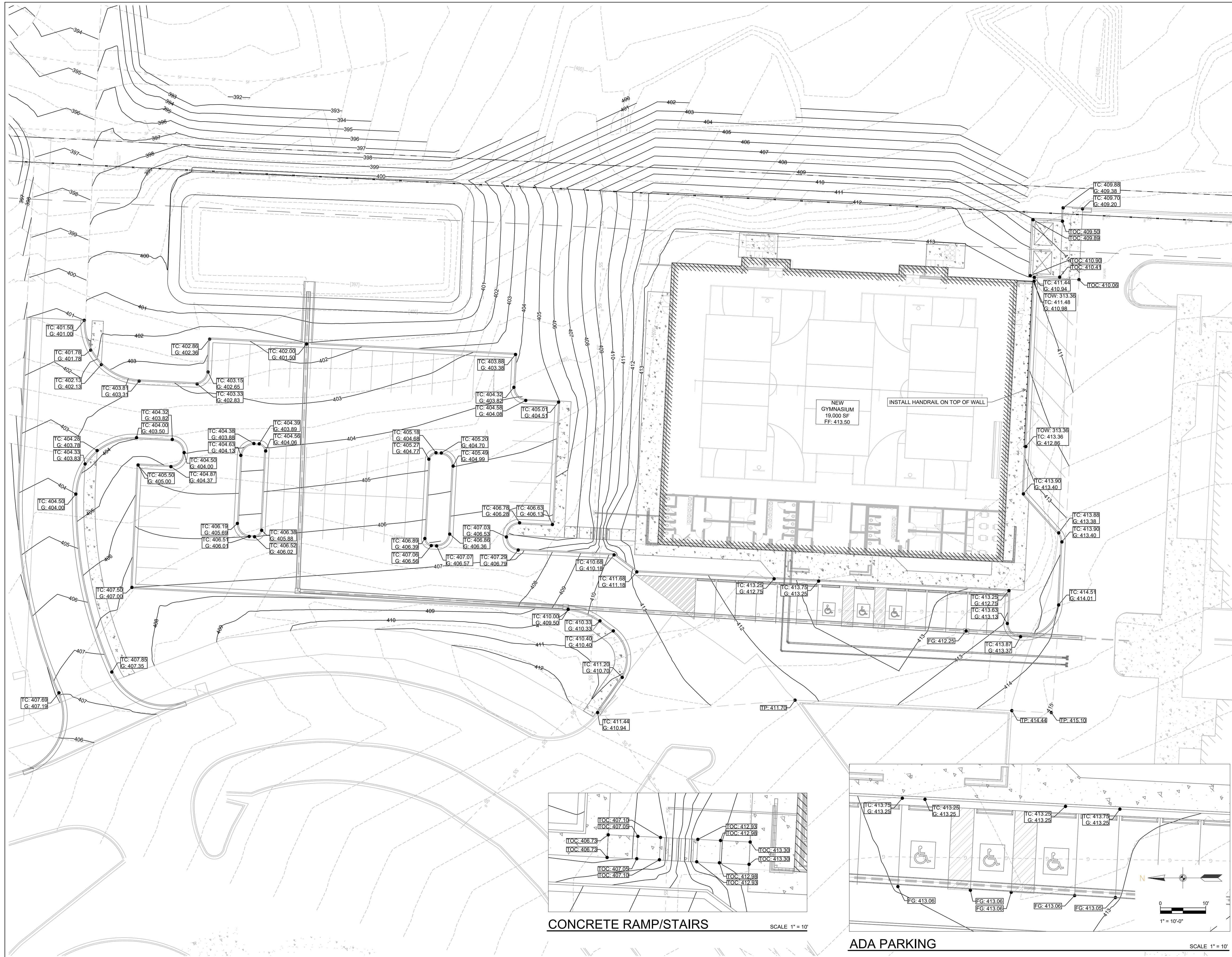


REVISION:

SUMMERWOOD SPORTS GYMNASIUM #3
7817 Hwy 5 N
Bryant, Arkansas

PRELIMINARY NOT FOR CONSTRUCTION

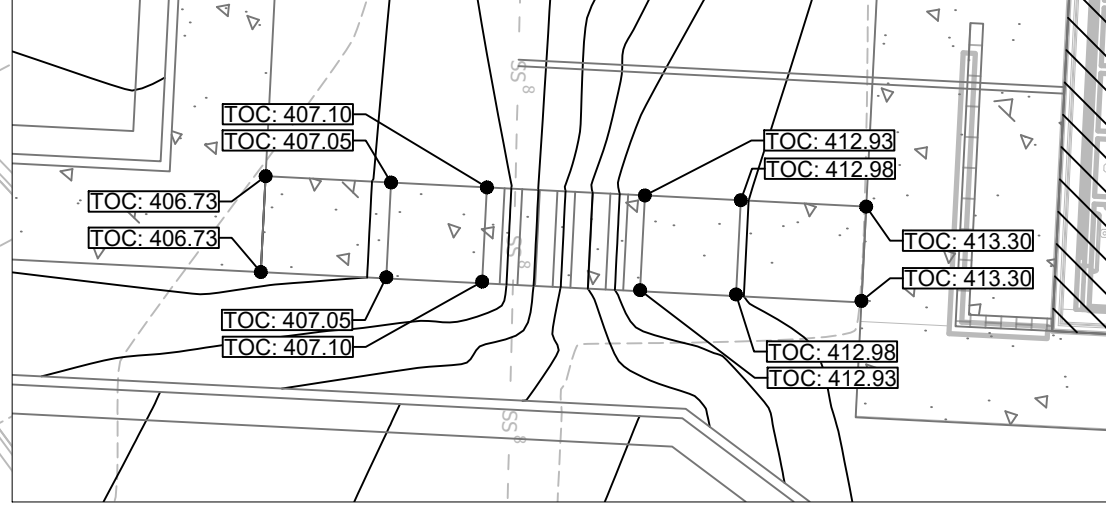
PROJECT NUMBER:
SHEET ISSUE DATE: 12/12/2023
PAGE TITLE: **SITE PLAN**
SHEET NUMBER: **C1.1**



GRADING PLAN

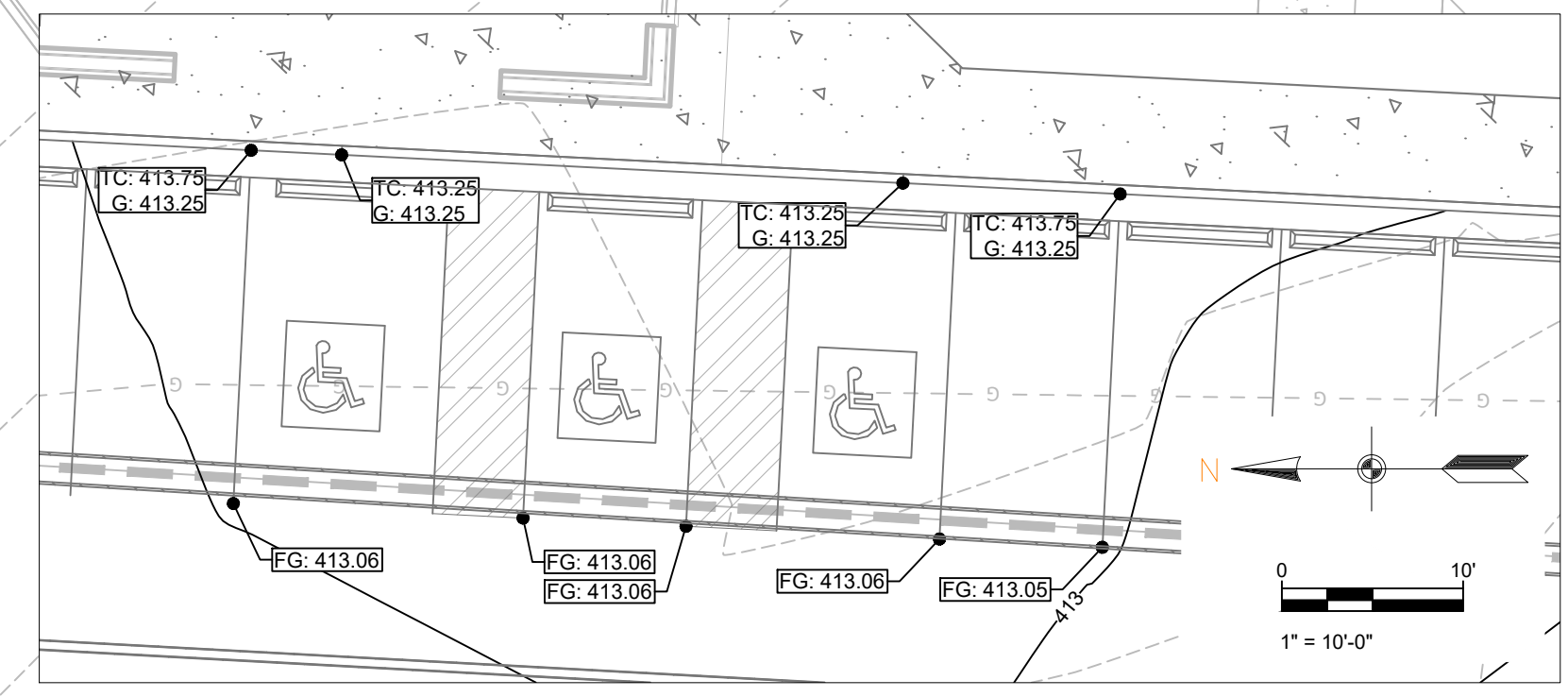
G = GUTTER ELEVATION
 TP = TOP OF PAVEMENT ELEVATION
 TOC = TOP OF CONCRETE ELEVATION
 FG = FINAL GRADE ELEVATION (NON PAVED AREAS)
 TC = TOP OF CURB ELEVATION
 TOW = TOP OF WALL

SCALE 1" = 20'



CONCRETE RAMP/STAIRS

SCALE 1" = 10'



ADA PARKING

SCALE 1" = 10'

GENERAL CONSTRUCTION NOTES

- A. THE CONTRACTOR WILL BE HELD SOLELY RESPONSIBLE FOR DAMAGES OCCURRING TO ANY PROPERTY DURING THE CONSTRUCTION OF THIS PROJECT. SAID CONTRACTOR SHALL TAKE ALL NECESSARY PRECAUTIONS TO PREVENT PROPERTY DAMAGE.
- B. IN ACCORDANCE WITH GENERALLY ACCEPTED CONSTRUCTION PRACTICES, THE CONTRACTOR WILL SOLELY AND COMPLETELY BE RESPONSIBLE FOR CONDITIONS OF THE JOB SITE, INCLUDING SAFETY WORK. THIS REQUIREMENT WILL APPLY CONTINUOUSLY AND WILL NOT BE LIMITED TO NORMAL WORKING HOURS.
- C. THE DUTY OF BRYANT UTILITIES TO CONDUCT CONSTRUCTION INSPECTION REVIEWS OF THE CONTRACTOR'S PERFORMANCE IS NOT AN INSPECTION OR REVIEW OF THE ADEQUACY OF THE CONTRACTOR'S SAFETY MEASURES IN, ON, OR NEAR THE CONSTRUCTION SITE.
- D. ALL WATER AND SEWER IMPROVEMENTS SHALL BE CONSTRUCTED IN ACCORDANCE WITH THE LATEST REVISION TO THE CITY OF BRYANT'S WATER AND WASTEWATER (SANITARY SEWER) STANDARD SPECIFICATIONS.
- E. THE CONTRACTOR IS SPECIFICALLY CAUTIONED THAT THE LOCATION AND/OR ELEVATION OF EXISTING UTILITIES AS SHOWN ON THESE PLANS IS BASED ON RECORDS OF THE VARIOUS UTILITY COMPANIES AND, WHERE POSSIBLE, MEASUREMENTS TAKEN IN THE FIELD. THE INFORMATION IS NOT TO BE RELIED ON AS BEING EXACT OR COMPLETE. THE CONTRACTOR MUST CALL THE APPROPRIATE UTILITY COMPANY AT LEAST 48 HOURS BEFORE ANY EXCAVATION TO REQUEST EXACT FIELD LOCATION OF ALL UTILITIES. IT SHALL BE THE RESPONSIBILITY OF THE CONTRACTOR TO LOCATE ALL EXISTING UTILITIES WHICH CONFLICT WITH PROPOSED IMPROVEMENTS SHOWN ON THE PLAN.
- F. CONTRACTOR IS TO REMOVE AND DISPOSE OF ALL DEBRIS, RUBBISH, AND OTHER MATERIALS RESULTING FROM PREVIOUS AND CURRENT DEMOLITION OPERATIONS. DISPOSAL WILL BE IN ACCORDANCE WITH ALL LOCAL, STATE AND/OR FEDERAL REGULATIONS GOVERNING SUCH OPERATIONS.
- G. PRIOR TO INSTALLATION OF ANY UTILITIES, THE CONTRACTOR IS TO EXCAVATE, VERIFY AND CALCULATE ALL CROSSINGS AND INFORM ANY AND ALL UTILITIES OF ANY CONFLICTS PRIOR TO CONSTRUCTION.
- H. CONSTRUCTION SHALL NOT START ON ANY WATER UTILITY TIE-INS UNTIL APPROVAL IS GIVEN BY BRYANT UTILITIES. SAID CONTRACTOR SHALL NOT OPERATE ANY VALVE, HYDRANT, OR WATER UTILITY APPURTENANCE NOR SHALL HE ATTACH TO OR TAP ANY WATER UTILITY MAIN WITHOUT APPROVAL. THE CONTRACTOR SHALL BEAR THE COST AND CONSEQUENCE OF ANY DISRUPTION OF UTILITY OPERATION CAUSED BY CONSTRUCTION.
- I. FIBER OPTIC CABLE ON AND/OR ADJACENT TO THIS SITE WERE NOT LOCATED BY THE SURVEY AND ARE NOT SHOWN. IT IS THE RESPONSIBILITY OF THE CONTRACTOR TO LOCATE ANY FIBER OPTIC CABLES ASSOCIATED WITH THIS SITE AND TAKE ALL NECESSARY AND REQUIRED PRECAUTIONS TO PROTECT ANY EXISTING FIBER OPTIC CABLES. CONTRACTORS SHALL COORDINATE ALL EFFORTS WITH OWNER OF FIBER OPTIC CABLES OR THEIR DESIGNATED REPRESENTATIVE.
- J. THE CONTRACTOR IS RESPONSIBLE FOR CONTACTING "ONECALL" SERVICE TO MARK ALL UTILITIES PRIOR TO ANY DEMOLITION, EARTHWORK, OR UTILITY WORK ON THIS SITE.

PHILLIP LEWIS ENGINEERING, INC.
 Structural + Civil Consultants
 23620 Interstate 30 | Bryant, Arkansas
 PH: 501-350-9840



SUMMERWOOD SPORTS GYMNASIUM #3
 7817 Hwy 5 N
 Bryant, Arkansas

REVISION:

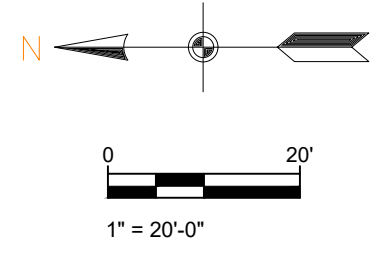
PRELIMINARY NOT FOR CONSTRUCTION

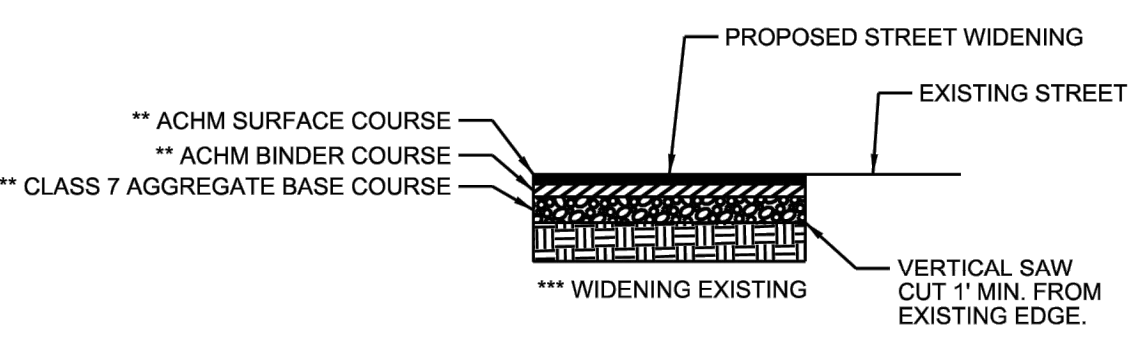
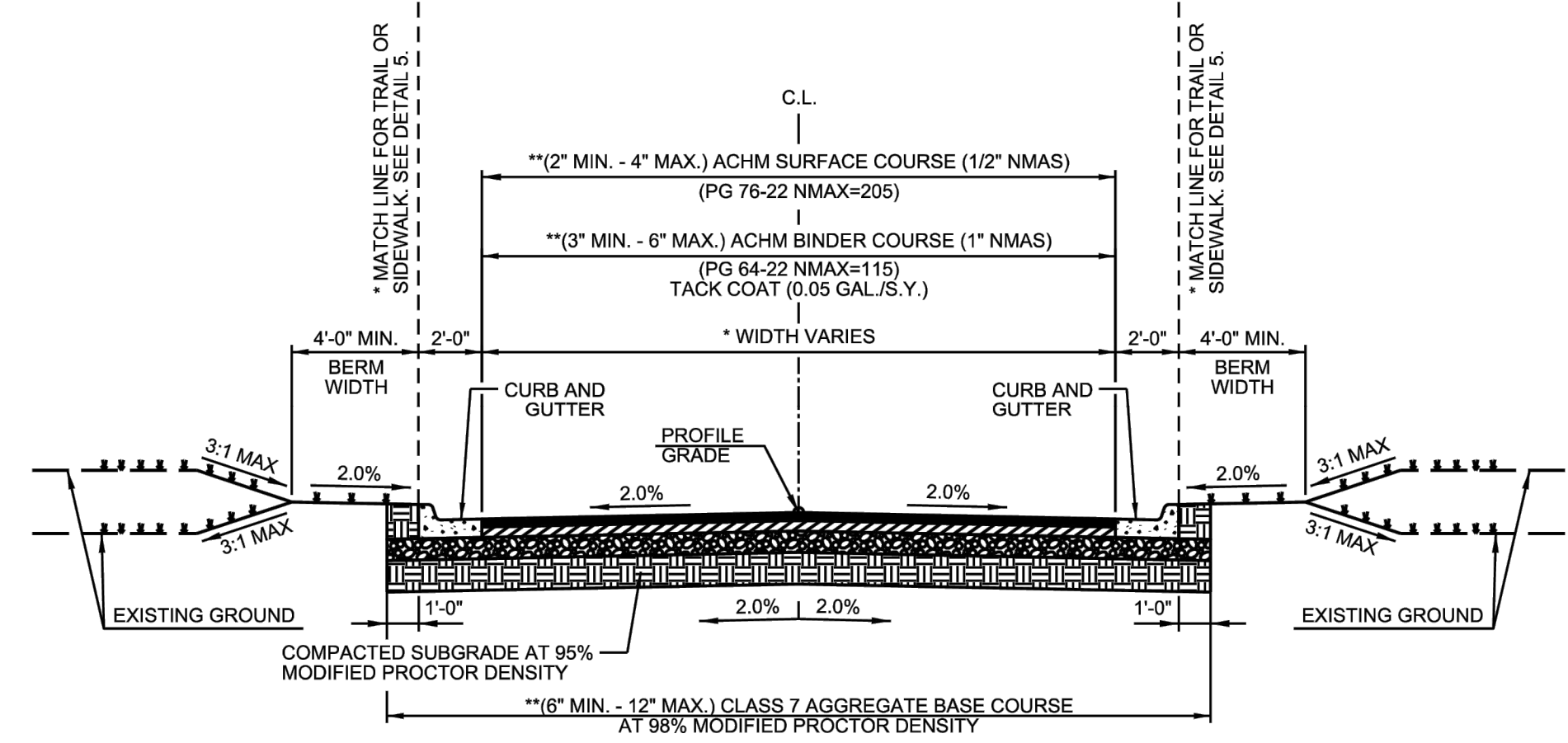
PROJECT NUMBER:

SHEET ISSUE DATE:
12/12/2023

PAGE TITLE:
GRADING PLAN

SHEET NUMBER:
C1.2





- GENERAL NOTES**
- IN AREAS TO RECEIVE BITUMINOUS PAVING, CONCRETE DRIVEWAYS OR CURB AND GUTTER, SUBGRADE SHALL BE COMPACTED TO A DENSITY NOT LESS THAN 95% OF MAXIMUM MODIFIED DENSITY OBTAINED AT OPTIMUM MOISTURE CONTENT.
 - FOR AREAS OF SUBGRADE PREPARATION TO RECEIVE CONCRETE SIDEWALKS, SUBGRADE SHALL BE COMPACTED TO DENSITY OF 90% MAXIMUM MODIFIED DENSITY.
 - CRUSHED STONE - MATERIAL IN EACH COURSE SHALL BE COMPACTED TO A DENSITY OF 98% MAXIMUM MODIFIED DENSITY.
 - ACHM BASE COURSE (4" MIN. - 12" MAX) (1 1/2" NMAS) MAY BE USED IF INCLUDED IN AN APPROVED PAVEMENT DESIGN.
- GENERAL NOTES**
- CROSS SECTIONS AND RIGHT-OF-WAY SHALL ADHERE TO THE MINIMUM WIDTH REQUIREMENTS SHOWN IN THE CITY OF BRYANT MASTER TRANSPORTATION PLAN. THE DEVELOPMENT REVIEW COMMITTEE SHALL DETERMINE WHICH VERSION OF STREET CLASSIFICATION AND WHAT WIDTHS WILL BE REQUIRED.
 - THICKNESS TO BE DETERMINED BY PAVEMENT DESIGN IN ACCORDANCE WITH SECTION 5.0 OF THE MINIMUM STANDARD SPECIFICATIONS FOR STREETS.
 - PAVEMENT RECONSTRUCTION TO CENTERLINE IS REQUIRED WHEN EXISTING STREET DOES NOT MEET THESE STANDARDS.

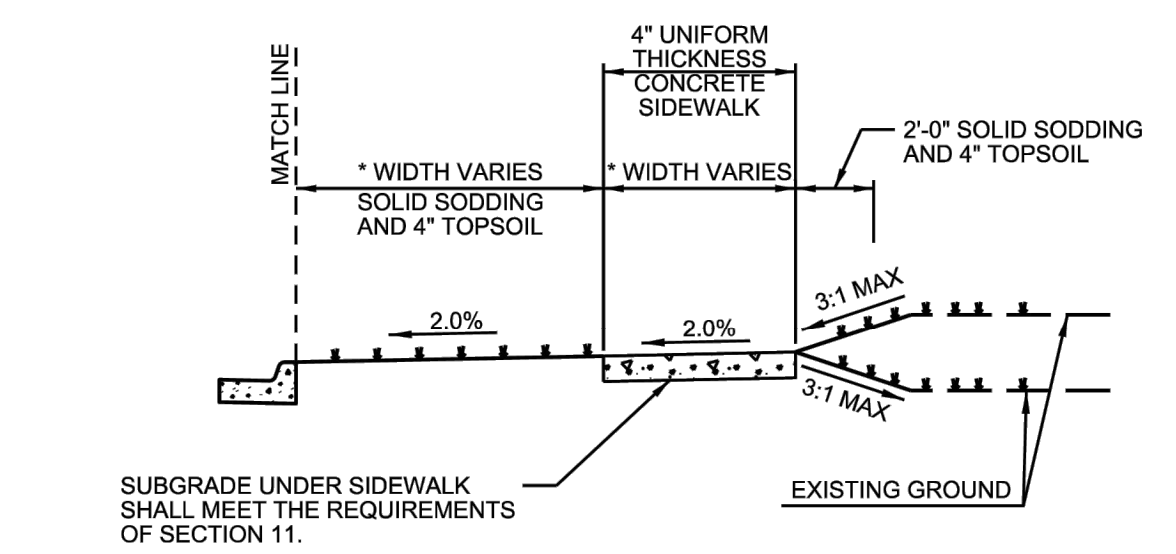
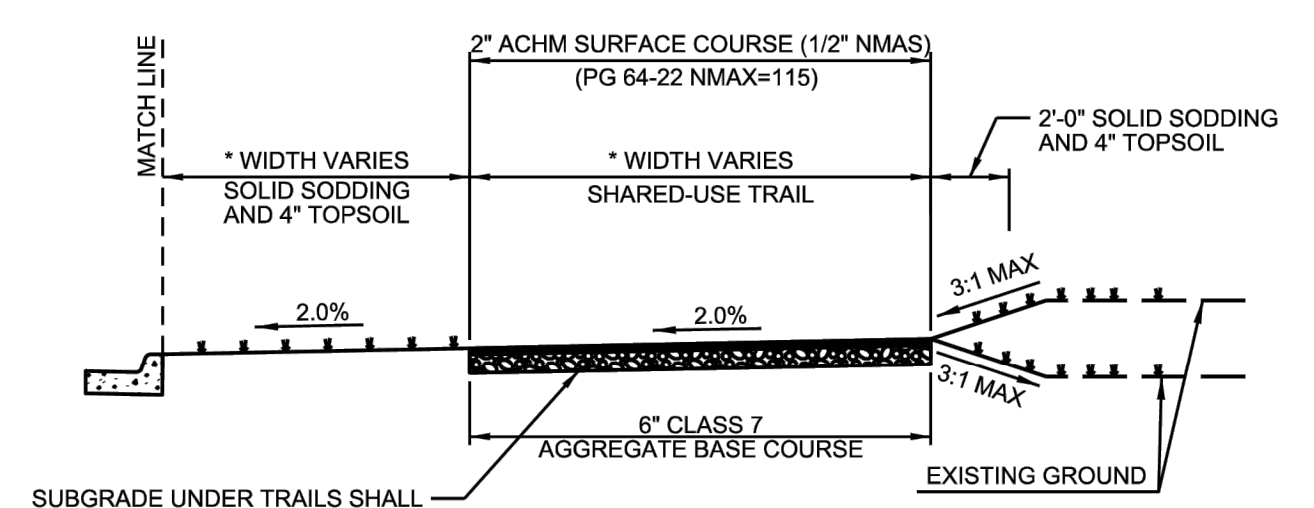
CITY OF BRYANT

TYPICAL SECTION MINOR ARTERIAL

ISSUE DATE: AUGUST 2021

REVISION DATE:

DETAIL 1



* WIDTH SHALL ADHERE TO THE MINIMUM WIDTH REQUIREMENTS SHOWN IN THE CITY OF BRYANT MASTER TRANSPORTATION PLAN. THE DEVELOPMENT REVIEW COMMITTEE SHALL DETERMINE WHICH VERSION OF STREET CLASSIFICATION AND WHAT WIDTHS WILL BE REQUIRED.

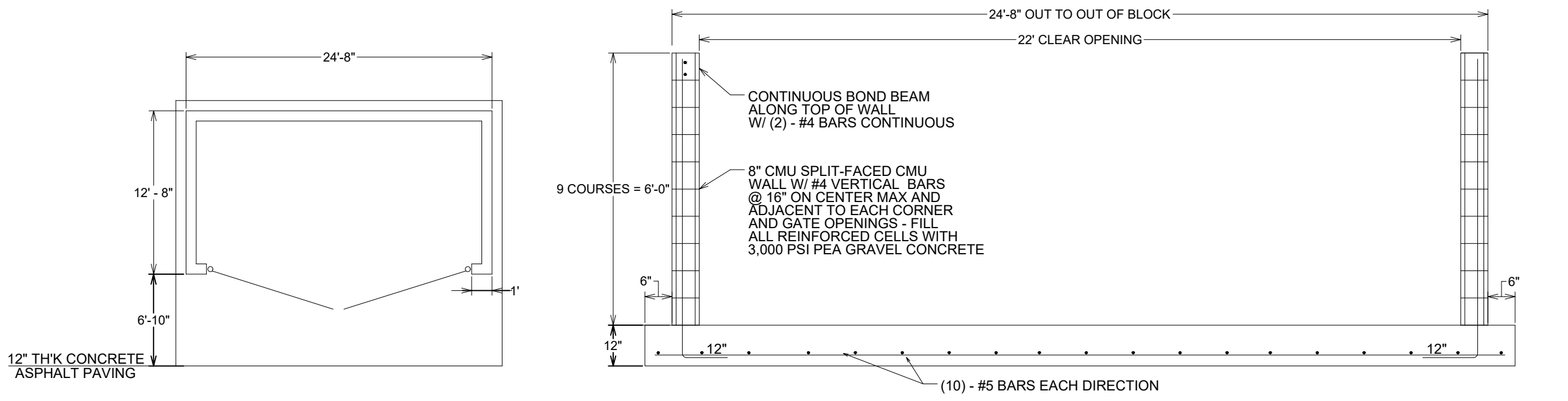
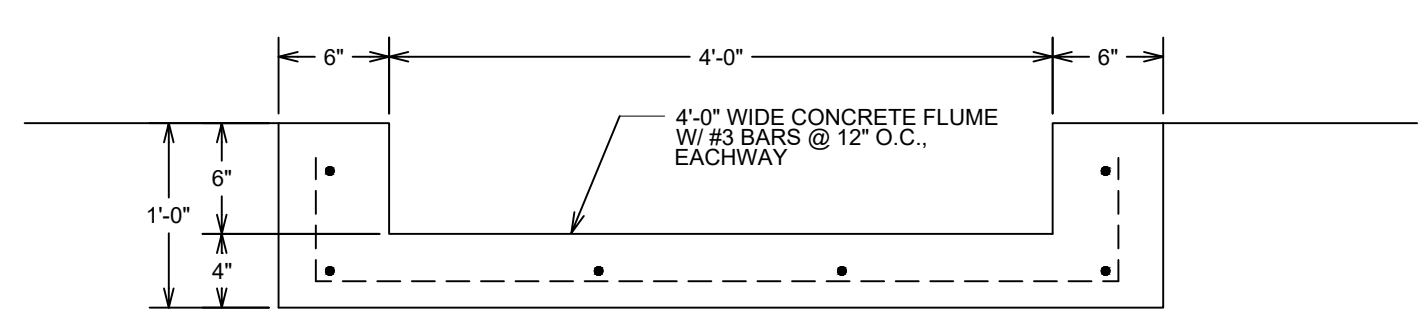
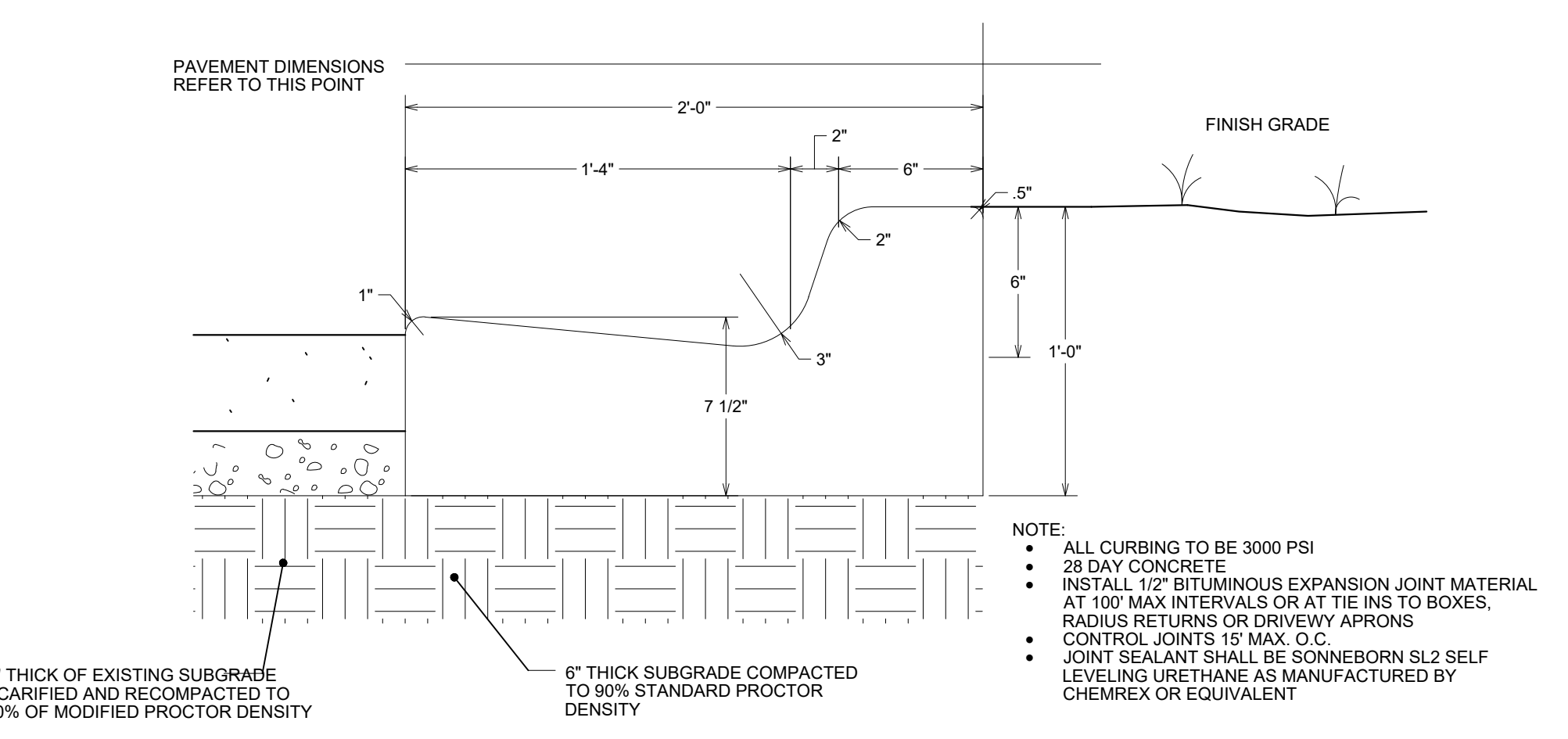
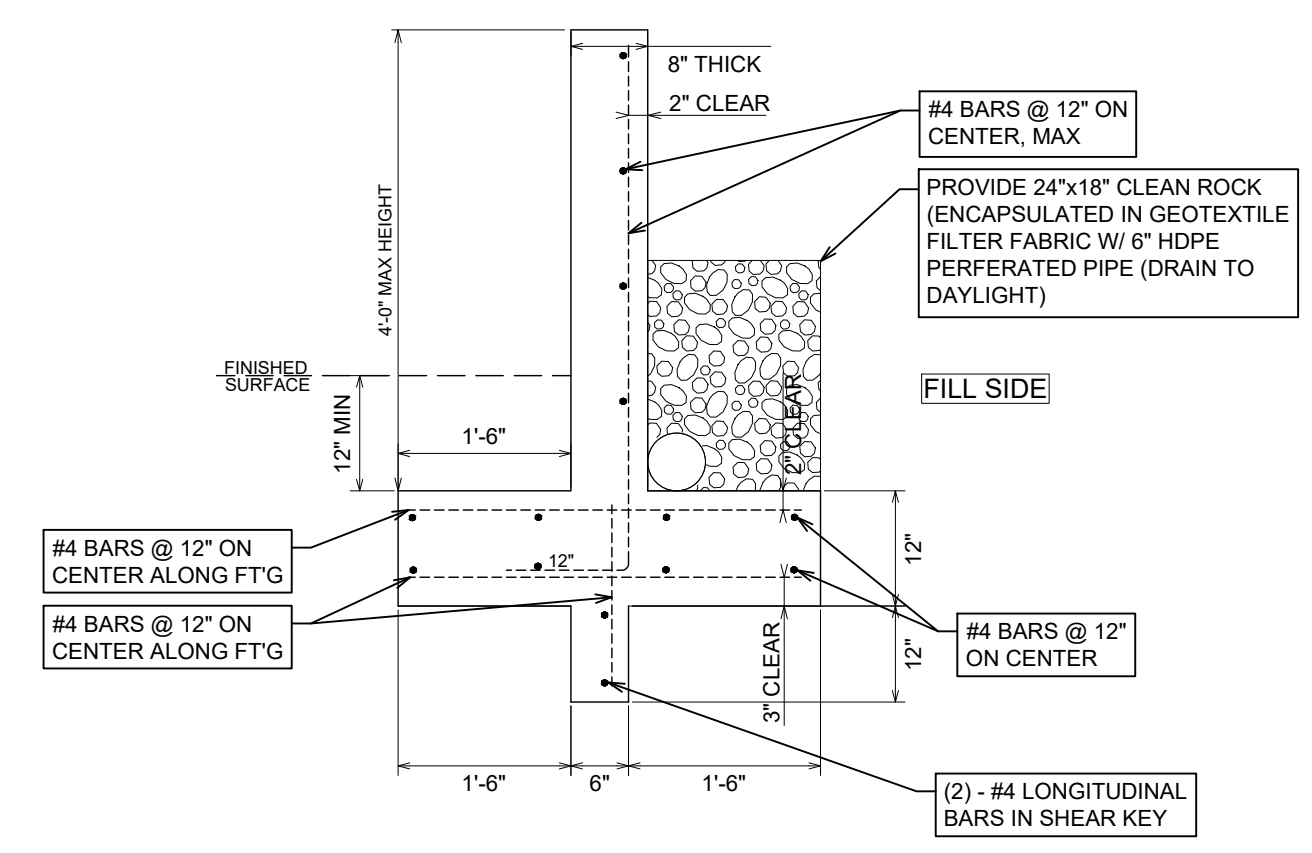
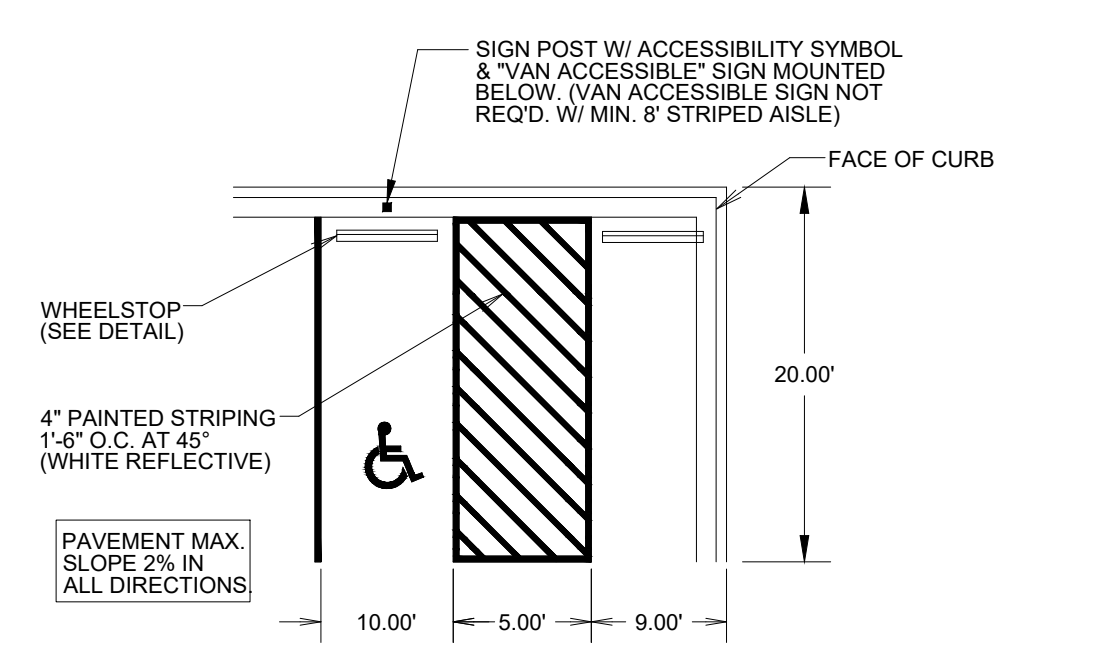
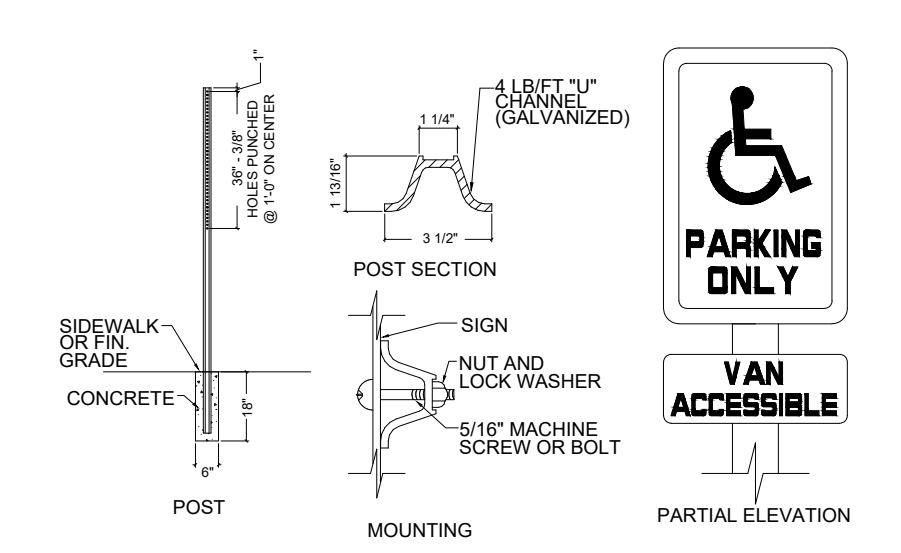
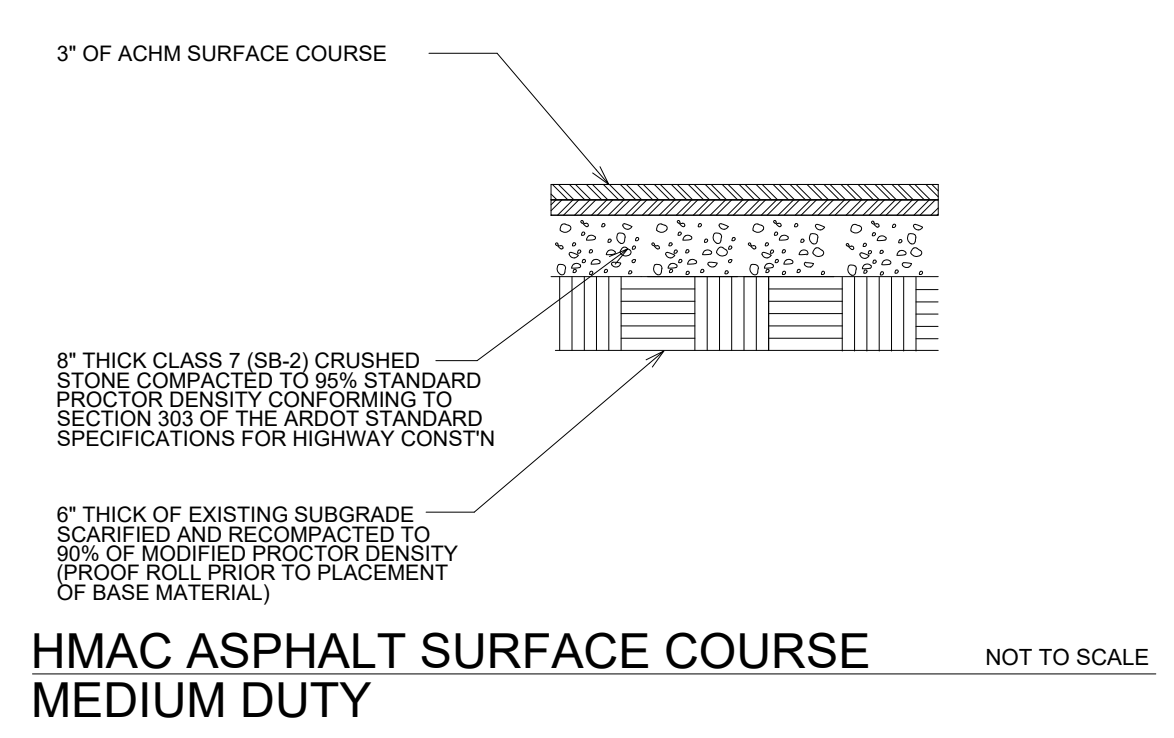
CITY OF BRYANT

TYPICAL SECTION END CONDITIONS

ISSUE DATE: AUGUST 2021

REVISION DATE:

DETAIL 5



2-0" CONCRETE CURB & GUTTER NOT TO SCALE

CONCRETE FLUME DETAIL NOT TO SCALE

DUMPSTER PAD/ENCLOSURE DETAIL NOT TO SCALE

PHILLIP LEWIS ENGINEERING, INC.
Structural + Civil Consultants
23620 Interstate 30 | Bryant, Arkansas
PH: 501-350-9840

PLE

REVISION:

SUMMERWOOD SPORTS GYMNASIUM #3
7817 Hwy 5 N
Bryant, Arkansas

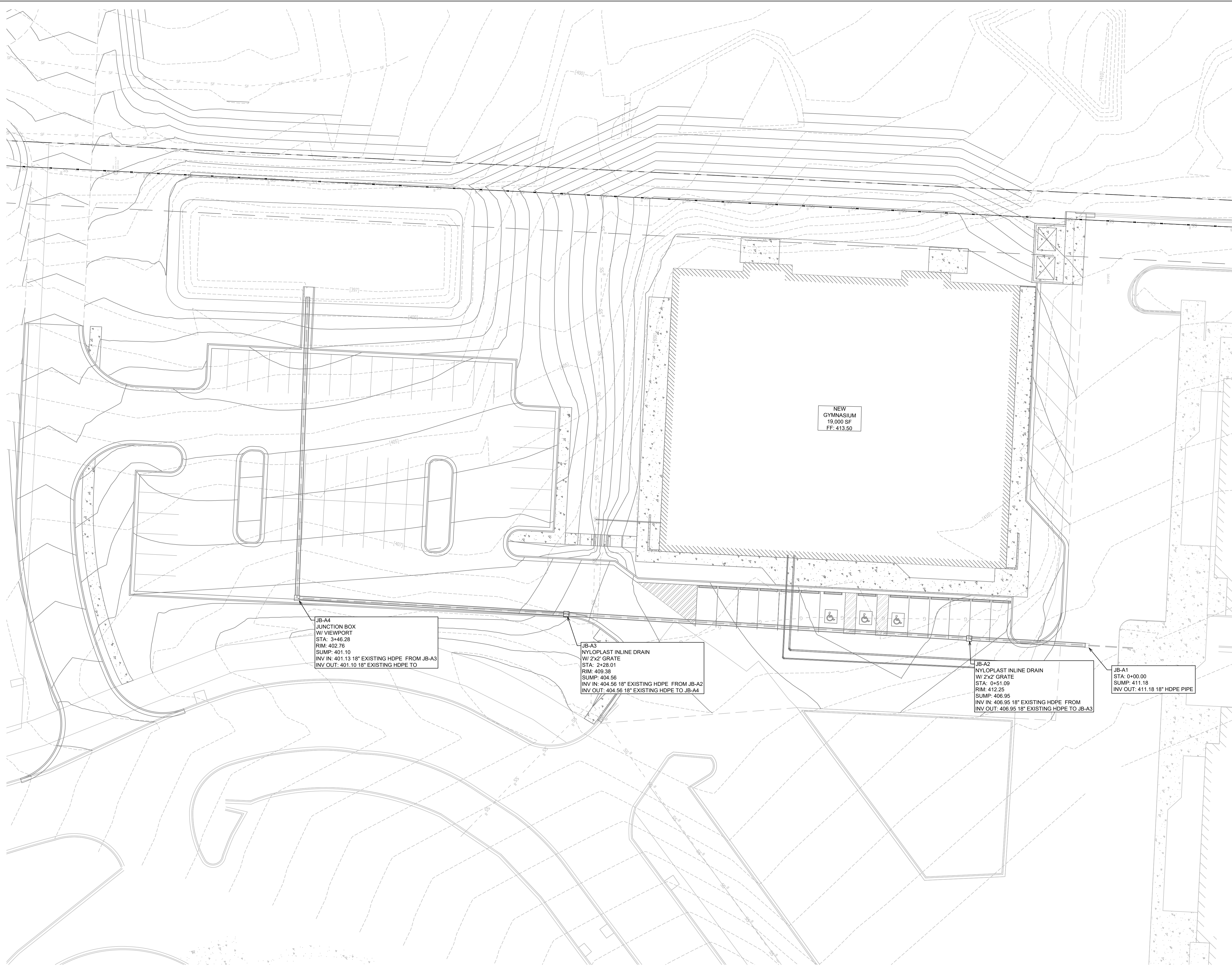
PROJECT NUMBER:

SHEET ISSUE DATE: 12/12/2023

PAGE TITLE: **SITE DETAILS**

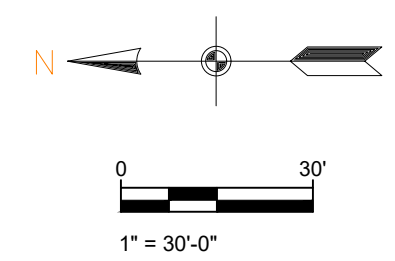
SHEET NUMBER: **C1.3**

PRELIMINARY NOT FOR CONSTRUCTION



STORMWATER PLAN

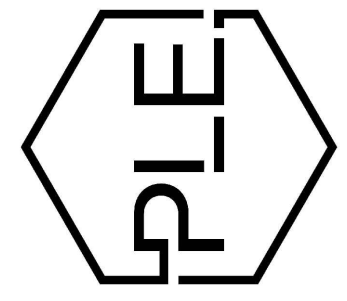
SCALE 1" = 30'



GENERAL CONSTRUCTION NOTES

- A. THE CONTRACTOR WILL BE HELD SOLELY RESPONSIBLE FOR DAMAGES OCCURRING TO ANY PROPERTY DURING THE CONSTRUCTION OF THIS PROJECT. SAID CONTRACTOR SHALL TAKE ALL NECESSARY PRECAUTIONS TO PREVENT PROPERTY DAMAGE.
- B. IN ACCORDANCE WITH GENERALLY ACCEPTED CONSTRUCTION PRACTICES, THE CONTRACTOR WILL SOLELY AND COMPLETELY BE RESPONSIBLE FOR CONDITIONS OF THE JOB SITE, INCLUDING SAFETY WORK. THIS REQUIREMENT WILL APPLY CONTINUOUSLY AND WILL NOT BE LIMITED TO NORMAL WORKING HOURS.
- C. THE DUTY OF BRYANT UTILITIES TO CONDUCT CONSTRUCTION INSPECTION REVIEWS OF THE CONTRACTOR'S PERFORMANCE IS NOT AN INSPECTION OR REVIEW OF THE ADEQUACY OF THE CONTRACTOR'S SAFETY MEASURES IN, ON, OR NEAR THE CONSTRUCTION SITE.
- D. ALL WATER AND SEWER IMPROVEMENTS SHALL BE CONSTRUCTED IN ACCORDANCE WITH THE LATEST REVISION TO THE CITY OF BRYANT'S WATER AND WASTEWATER (SANITARY SEWER) STANDARD SPECIFICATIONS.
- E. THE CONTRACTOR IS SPECIFICALLY CAUTIONED THAT THE LOCATION AND/OR ELEVATION OF EXISTING UTILITIES AS SHOWN ON THESE PLANS IS BASED ON RECORDS OF THE VARIOUS UTILITY COMPANIES AND, WHERE POSSIBLE, MEASUREMENTS TAKEN IN THE FIELD. THE INFORMATION IS NOT TO BE RELIED ON AS BEING EXACT OR COMPLETE. THE CONTRACTOR MUST CALL THE APPROPRIATE UTILITY COMPANY AT LEAST 48 HOURS BEFORE ANY EXCAVATION TO REQUEST EXACT FIELD LOCATION OF ALL UTILITIES. IT SHALL BE THE RESPONSIBILITY OF THE CONTRACTOR TO LOCATE ALL EXISTING UTILITIES WHICH CONFLICT WITH PROPOSED IMPROVEMENTS SHOWN ON THE PLAN.
- F. CONTRACTOR IS TO REMOVE AND DISPOSE OF ALL DEBRIS, RUBBISH, AND OTHER MATERIALS RESULTING FROM PREVIOUS AND CURRENT DEMOLITION OPERATIONS. DISPOSAL WILL BE IN ACCORDANCE WITH ALL LOCAL, STATE AND/OR FEDERAL REGULATIONS GOVERNING SUCH OPERATIONS.
- G. PRIOR TO INSTALLATION OF ANY UTILITIES, THE CONTRACTOR IS TO EXCAVATE, VERIFY AND CALCULATE ALL CROSSINGS AND INFORM ANY AND ALL UTILITIES OF ANY CONFLICTS PRIOR TO CONSTRUCTION.
- H. CONSTRUCTION SHALL NOT START ON ANY WATER UTILITY TIE-INS UNTIL APPROVAL IS GIVEN BY BRYANT UTILITIES. SAID CONTRACTOR SHALL NOT OPERATE ANY VALVE, HYDRANT, OR WATER UTILITY APPURTENANCE NOR SHALL HE ATTACH TO OR TAP ANY WATER UTILITY MAIN WITHOUT APPROVAL. THE CONTRACTOR SHALL BEAR THE COST AND CONSEQUENCE OF ANY DISRUPTION OF UTILITY OPERATION CAUSED BY CONSTRUCTION.
- I. FIBER OPTIC CABLE ON AND/OR ADJACENT TO THIS SITE WERE NOT LOCATED BY THE SURVEY AND ARE NOT SHOWN. IT IS THE RESPONSIBILITY OF THE CONTRACTOR TO LOCATE ANY FIBER OPTIC CABLES ASSOCIATED WITH THIS SITE AND TAKE ALL NECESSARY AND REQUIRED PRECAUTIONS TO PROTECT ANY EXISTING FIBER OPTIC CABLES. CONTRACTORS SHALL COORDINATE ALL EFFORTS WITH OWNER OF FIBER OPTIC CABLES OR THEIR DESIGNATED REPRESENTATIVE.
- J. THE CONTRACTOR IS RESPONSIBLE FOR CONTACTING "ONECALL" SERVICE TO MARK ALL UTILITIES PRIOR TO ANY DEMOLITION, EARTHWORK, OR UTILITY WORK ON THIS SITE.

PHILLIP LEWIS ENGINEERING, INC.
Structural + Civil Consultants
23620 Interstate 30 | Bryant, Arkansas
PH: 501-350-9840



REVISION:

SUMMERWOOD SPORTS GYMNASIUM #3
7817 Hwy 5 N
Bryant, Arkansas

PRELIMINARY
NOT FOR CONSTRUCTION

PROJECT NUMBER:

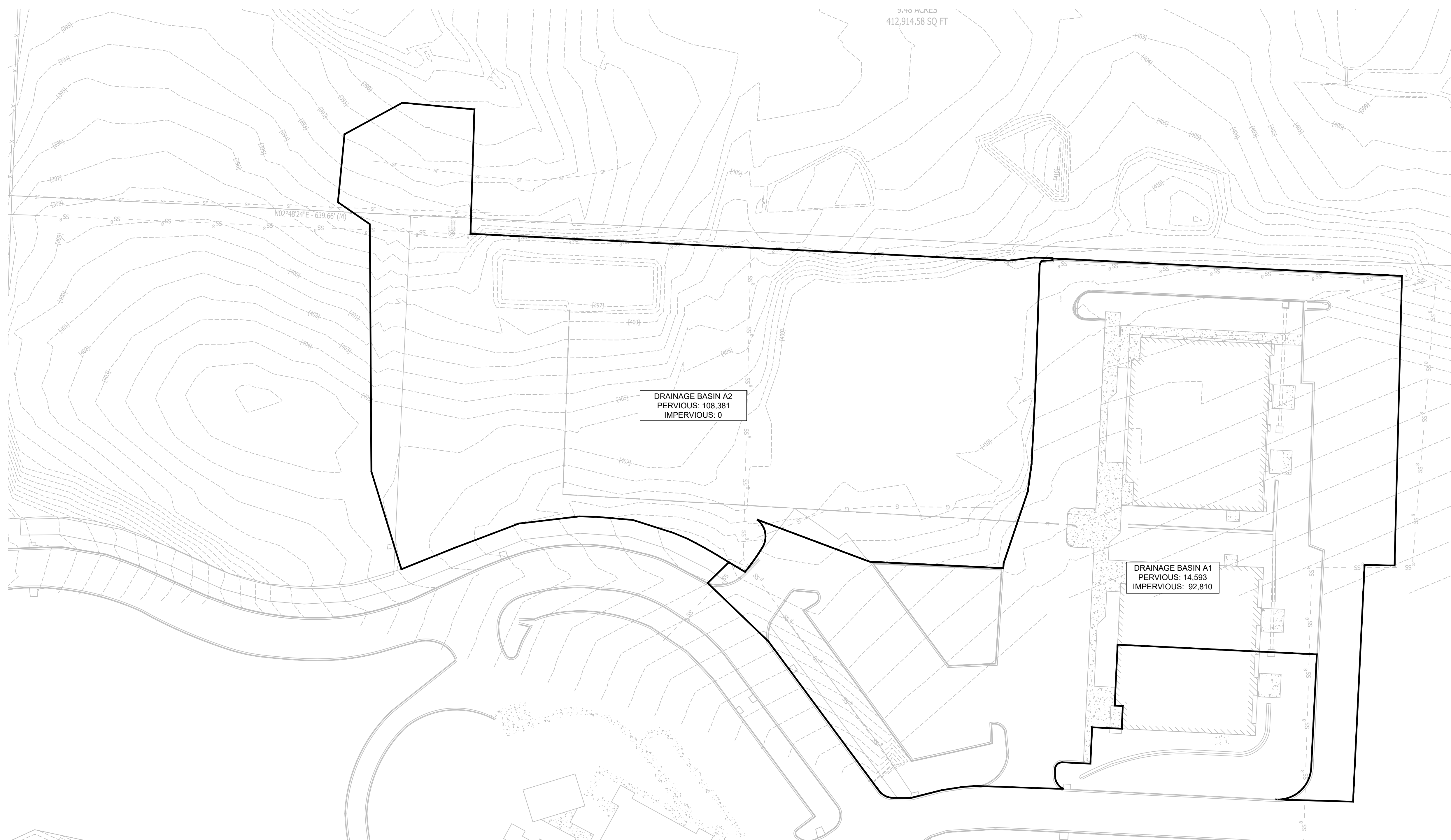
SHEET ISSUE DATE:
12/12/2023

PAGE TITLE:

STORMWATER PLAN

SHEET NUMBER:

C1.4



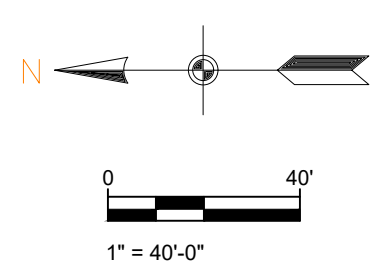
3.40 ALKED
412,914.58 SQ FT

DRAINAGE BASIN A2
PERVIOUS: 108,381
IMPERVIOUS: 0

DRAINAGE BASIN A1
PERVIOUS: 14,593
IMPERVIOUS: 92,810

PRE DRAINAGE MAP

SCALE 1" = 40'



REVISION:

**SUMMERWOOD SPORTS
GYMNASIUM #3**
7817 Hwy 5 N
Bryant, Arkansas

PRELIMINARY
NOT FOR CONSTRUCTION

PROJECT NUMBER:

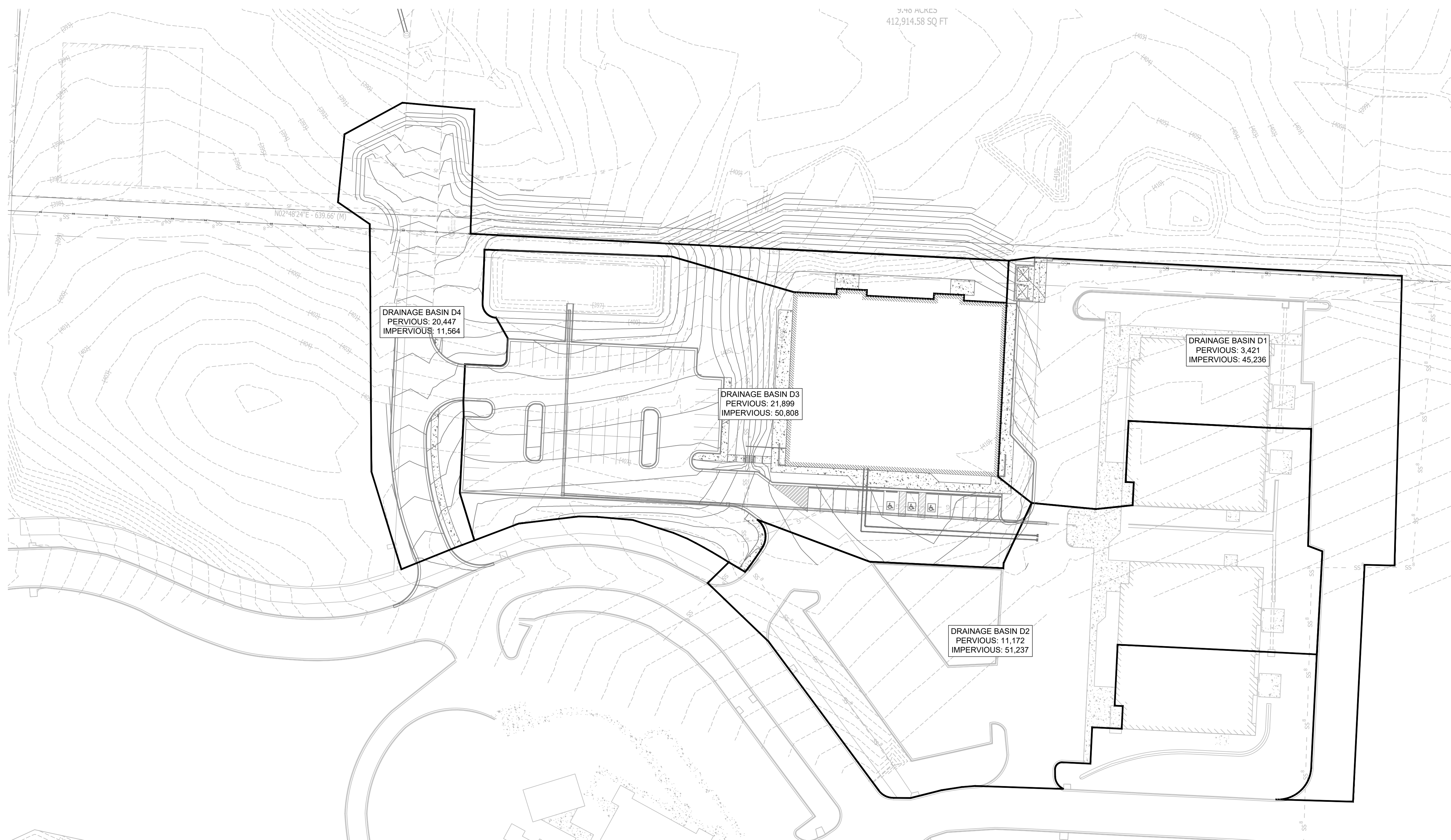
SHEET ISSUE DATE:
12/12/2023

PAGE TITLE:

PRE DRAINAGE
MAP

SHEET NUMBER:

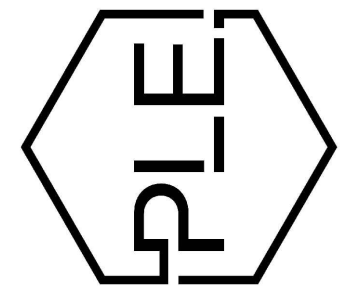
C1.5



POST DRAINAGE MAP

SCALE 1" = 40'

PHILLIP LEWIS ENGINEERING, INC.
Structural + Civil Consultants
23620 Interstate 30 | Bryant, Arkansas
PH: 501-350-9840

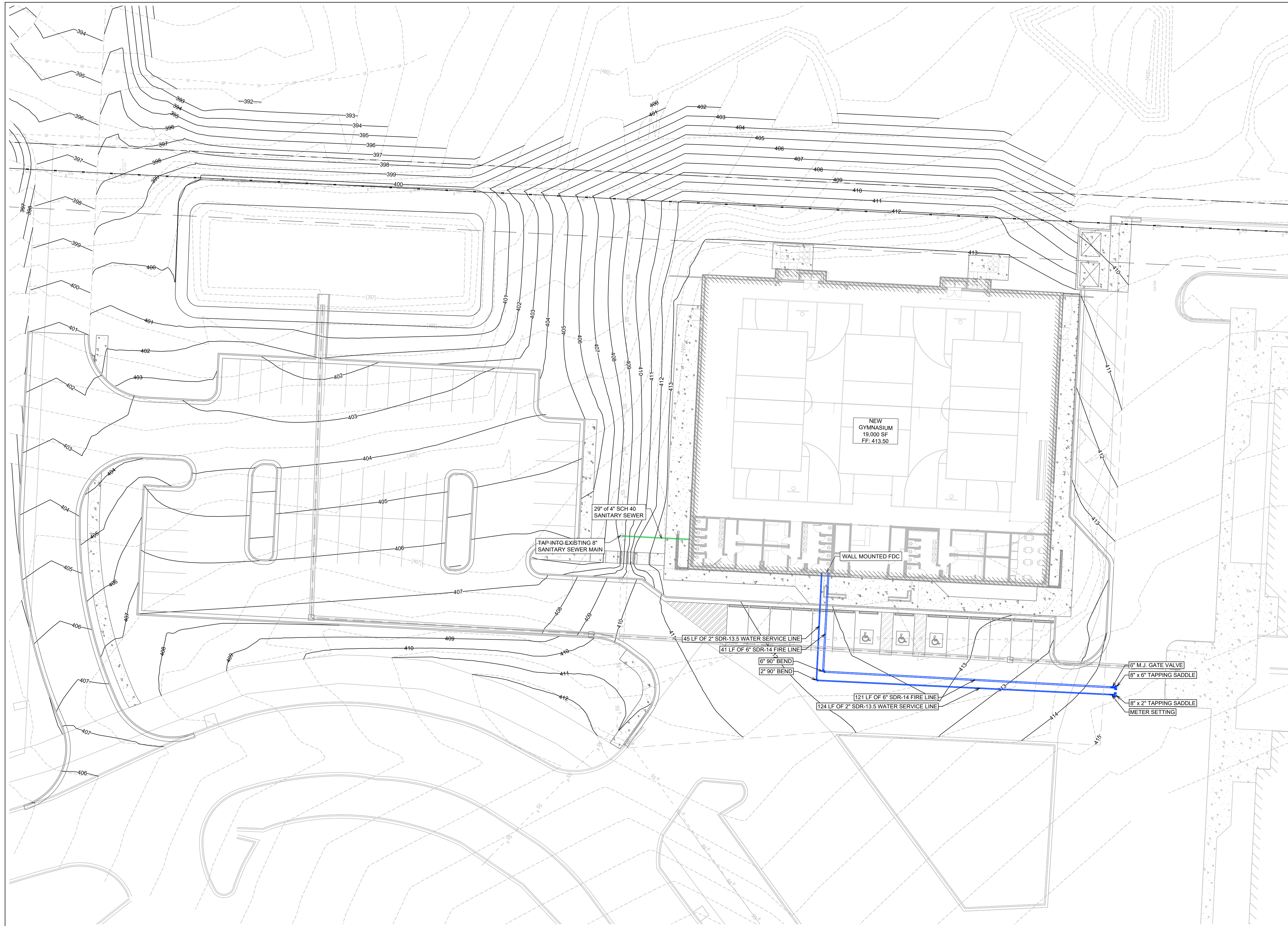


REVISION:

SUMMERWOOD SPORTS GYMNASIUM #3
7817 Hwy 5 N
Bryant, Arkansas

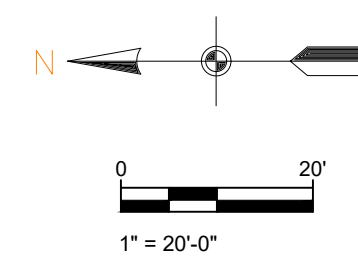
PRELIMINARY
NOT FOR CONSTRUCTION

PROJECT NUMBER:
SHEET ISSUE DATE: 12/12/2023
PAGE TITLE:
POST DRAINAGE MAP
SHEET NUMBER:
C1.6



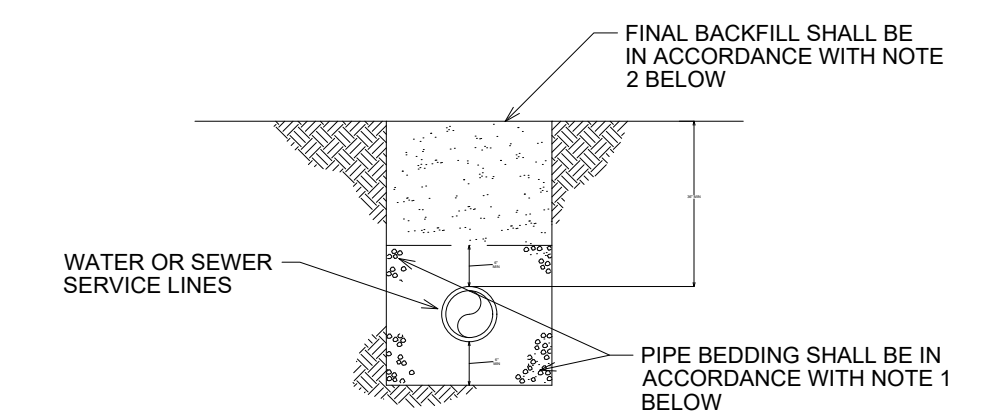
UTILITY PLAN

SCALE 1" = 20'



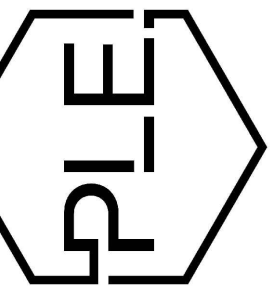
GENERAL CONSTRUCTION NOTES

- A. THE CONTRACTOR WILL BE HELD SOLELY RESPONSIBLE FOR DAMAGES OCCURRING TO ANY PROPERTY DURING THE CONSTRUCTION OF THIS PROJECT. SAID CONTRACTOR SHALL TAKE ALL NECESSARY PRECAUTIONS TO PREVENT PROPERTY DAMAGE.
- B. IN ACCORDANCE WITH GENERALLY ACCEPTED CONSTRUCTION PRACTICES, THE CONTRACTOR WILL SOLELY AND COMPLETELY BE RESPONSIBLE FOR CONDITIONS OF THE JOB SITE, INCLUDING SAFETY WORK. THIS REQUIREMENT WILL APPLY CONTINUOUSLY AND WILL NOT BE LIMITED TO NORMAL WORKING HOURS.
- C. THE DUTY OF BRYANT UTILITIES TO CONDUCT CONSTRUCTION INSPECTION REVIEWS OF THE CONTRACTOR'S PERFORMANCE IS NOT AN INSPECTION OR REVIEW OF THE ADEQUACY OF THE CONTRACTOR'S SAFETY MEASURES IN, ON, OR NEAR THE CONSTRUCTION SITE.
- D. ALL WATER AND SEWER IMPROVEMENTS SHALL BE CONSTRUCTED IN ACCORDANCE WITH THE LATEST REVISION TO THE CITY OF BRYANT'S WATER AND WASTEWATER (SANITARY SEWER) STANDARD SPECIFICATIONS.
- E. THE CONTRACTOR IS SPECIFICALLY CAUTIONED THAT THE LOCATION AND/OR ELEVATION OF EXISTING UTILITIES AS SHOWN ON THESE PLANS IS BASED ON RECORDS OF THE VARIOUS UTILITY COMPANIES AND, WHERE POSSIBLE, MEASUREMENTS TAKEN IN THE FIELD. THE INFORMATION IS NOT TO BE RELIED ON AS BEING EXACT OR COMPLETE. THE CONTRACTOR MUST CALL THE APPROPRIATE UTILITY COMPANY AT LEAST 48 HOURS BEFORE ANY EXCAVATION TO REQUEST EXACT FIELD LOCATION OF ALL UTILITIES. IT SHALL BE THE RESPONSIBILITY OF THE CONTRACTOR TO LOCATE ALL EXISTING UTILITIES WHICH CONFLICT WITH PROPOSED IMPROVEMENTS SHOWN ON THE PLAN.
- F. CONTRACTOR IS TO REMOVE AND DISPOSE OF ALL DEBRIS, RUBBISH, AND OTHER MATERIALS RESULTING FROM PREVIOUS AND CURRENT DEMOLITION OPERATIONS. DISPOSAL WILL BE IN ACCORDANCE WITH ALL LOCAL, STATE AND/OR FEDERAL REGULATIONS GOVERNING SUCH OPERATIONS.
- G. PRIOR TO INSTALLATION OF ANY UTILITIES, THE CONTRACTOR IS TO EXCAVATE, VERIFY AND CALCULATE ALL CROSSINGS AND INFORM ANY AND ALL UTILITIES OF ANY CONFLICTS PRIOR TO CONSTRUCTION.
- H. CONSTRUCTION SHALL NOT START ON ANY WATER UTILITY TIE-INS UNTIL APPROVAL IS GIVEN BY BRYANT UTILITIES. SAID CONTRACTOR SHALL NOT OPERATE ANY VALVE, HYDRANT, OR WATER UTILITY APPURTENANCE NOR SHALL HE ATTACH TO OR TAP ANY WATER UTILITY MAIN WITHOUT APPROVAL. THE CONTRACTOR SHALL BEAR THE COST AND CONSEQUENCE OF ANY DISRUPTION OF UTILITY OPERATION CAUSED BY CONSTRUCTION.
- I. FIBER OPTIC CABLE ON AND/OR ADJACENT TO THIS SITE WERE NOT LOCATED BY THE SURVEY AND ARE NOT SHOWN. IT IS THE RESPONSIBILITY OF THE CONTRACTOR TO LOCATE ANY FIBER OPTIC CABLES ASSOCIATED WITH THIS SITE AND TAKE ALL NECESSARY AND REQUIRED PRECAUTIONS TO PROTECT ANY EXISTING FIBER OPTIC CABLES. CONTRACTORS SHALL COORDINATE ALL EFFORTS WITH OWNER OF FIBER OPTIC CABLES OR THEIR DESIGNATED REPRESENTATIVE.
- J. THE CONTRACTOR IS RESPONSIBLE FOR CONTACTING "ONECALL" SERVICE TO MARK ALL UTILITIES PRIOR TO ANY DEMOLITION, EARTHWORK, OR UTILITY WORK ON THIS SITE.



WATER AND SEWER LINES BEDDING DETAIL NOT TO SCALE

- NOTES:
- BEDDING SHALL BE "GRIT" PER ASTM 2774 OR ASTM D448 SIZE 67 A MINIMUM OF 6" ALL AROUND PIPE.
 - INITIAL BACKFILL NOT UNDER PAVED AREAS CAN BE CLASS III COMPACTED TO 90% STANDARD PROCTOR. ALL BACKFILL UNDER PAVED AREAS SHALL BE CLASS 7 CRUSHED STONE (SB-2) COMPACTED TO 95% STANDARD PROCTOR DENSITY.
 - ALL MATERIALS ARE CLASSIFIED IN ACCORDANCE WITH ASTM D2321-89.
 - ALL MATERIALS SHALL BE INSTALLED IN MAXIMUM 8' LIFTS IN ACCORDANCE WITH ASTM D998. CLASS III AND IV-A MATERIALS SHALL BE COMPACTED TO NEAR OPTIMUM MOISTURE CONTENT.
 - FILL SALVAGED FROM EXCAVATION SHALL BE FREE OF DEBRIS, ORGANICS, AND ROCKS LARGER THAN 3".
 - ALL TRENCH EXCAVATIONS SHALL BE SLOPED, SHORED, SHEETED, BRACED, OR OTHERWISE SUPPORTED IN COMPLIANCE WITH OSHA REGULATIONS AND LOCAL ORDINANCES.



REVISION:

PRELIMINARY
NOT FOR CONSTRUCTION

PROJECT NUMBER:

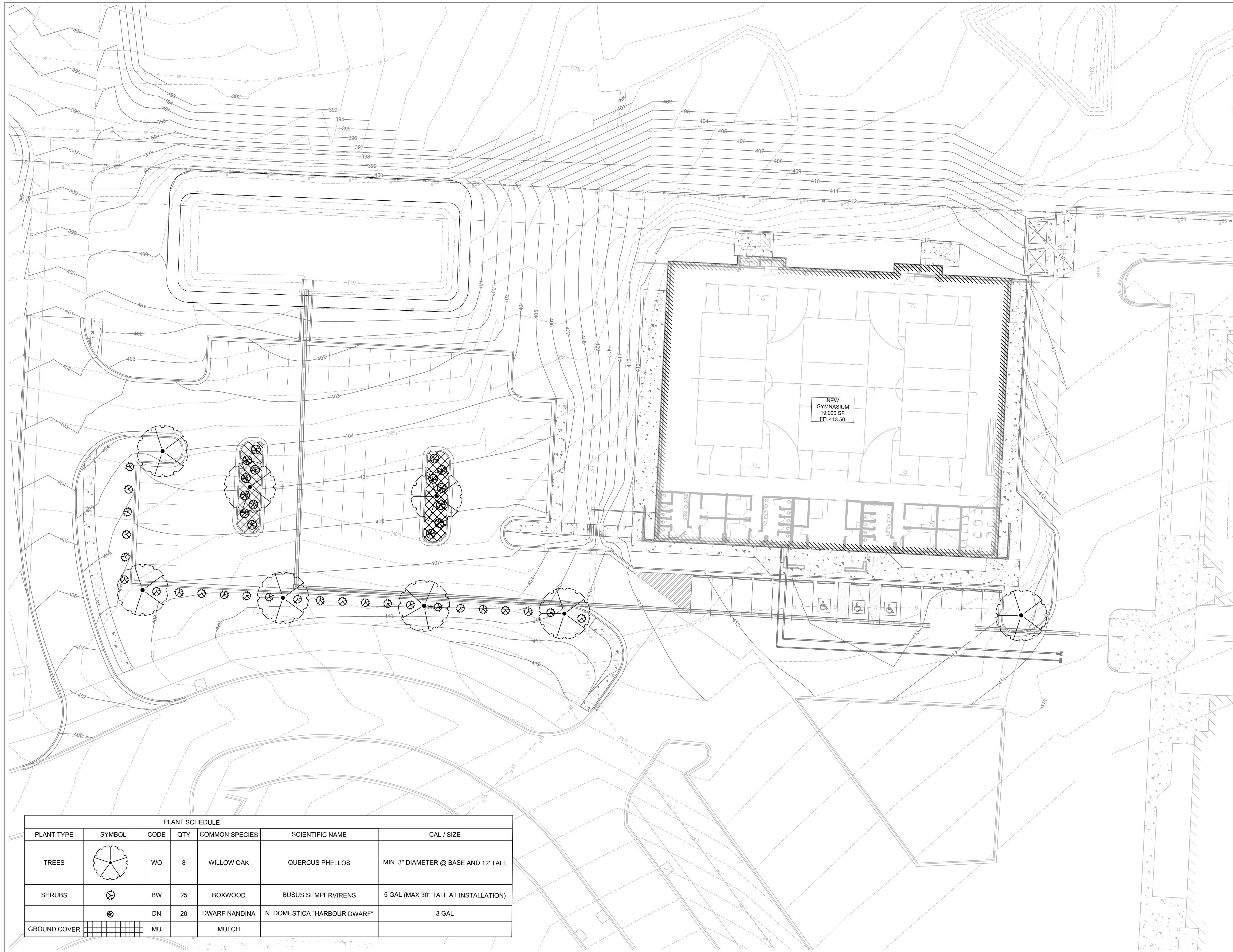
SHEET ISSUE DATE:
12/12/2023

PAGE TITLE:

UTILITY PLAN

SHEET NUMBER:

C1.7

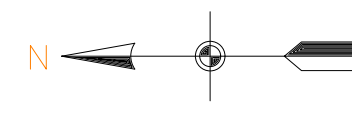


PLANT SCHEDULE						
PLANT TYPE	SYMBOL	CODE	QTY	COMMON SPECIES	SCIENTIFIC NAME	CAL / SIZE
TREES		WO	8	WILLOW OAK	QUERCUS PHELLOS	MIN. 3" DIAMETER @ BASE AND 12' TALL
SHRUBS		BW	25	BOXWOOD	BUSUS SEMPERVIRENS	5 GAL (MAX 30" TALL AT INSTALLATION)
		DN	20	DWARF NANDINA	N. DOMESTICA "HARBOUR DWARF"	3 GAL
GROUND COVER		MU		MULCH		

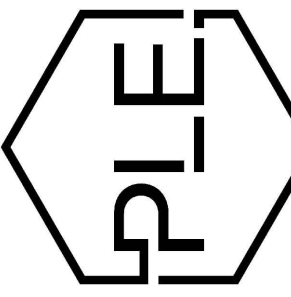
LANDSCAPING PLAN

THE ABOVE SPECIES IS OPTIONAL IF OWNER WANTS TO GO WITH THE SAME SPECIES AS ADJACENT PROPERTY

SCALE 1" = 20'



0 20'
1" = 20'-0"



REVISION:

SUMMERWOOD SPORTS GYMNASIUM #3

7817 Hwy 5 N
Bryant, Arkansas

PRELIMINARY
NOT FOR CONSTRUCTION

PROJECT NUMBER:

SHEET ISSUE DATE:
12/12/2023

PAGE TITLE:

LANDSCAPING PLAN

SHEET NUMBER:




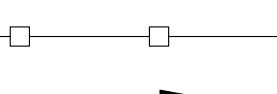

C1.8



SWPPP PH. 1

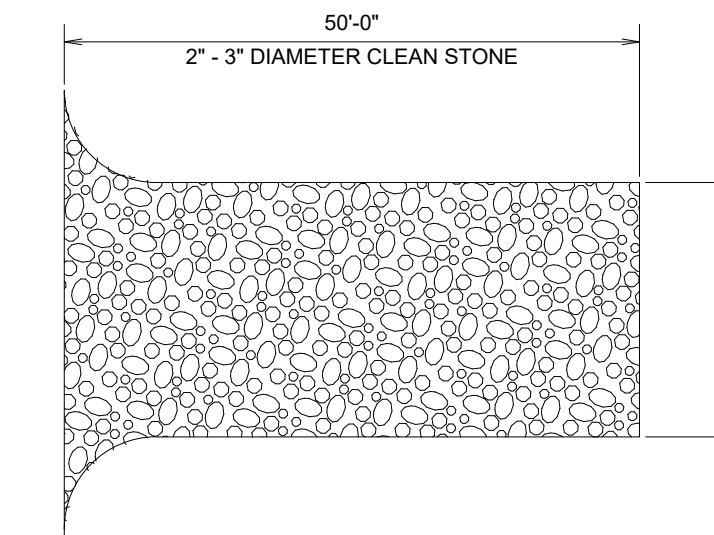
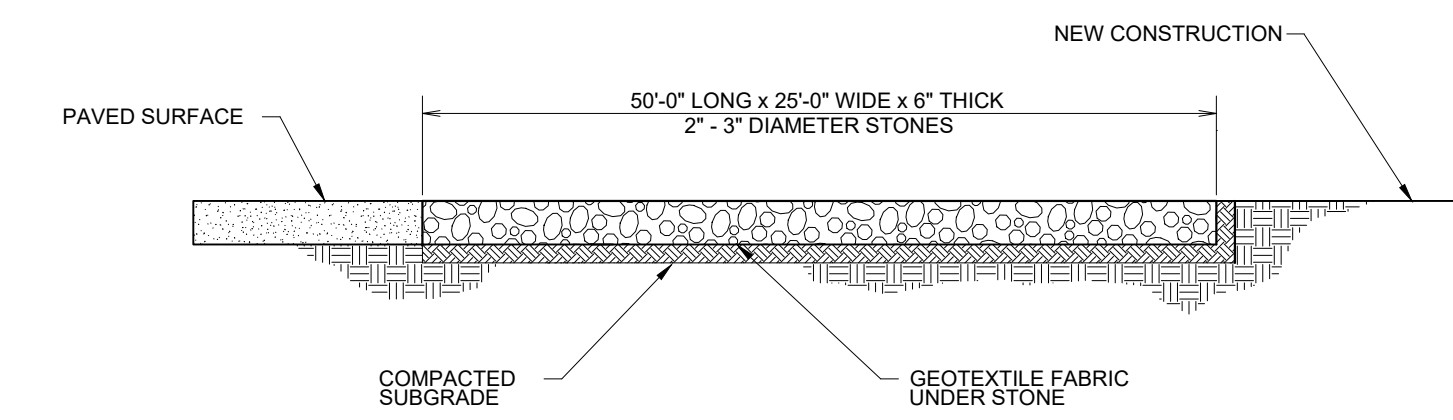
SCALE 1" = 50'

LEGEND

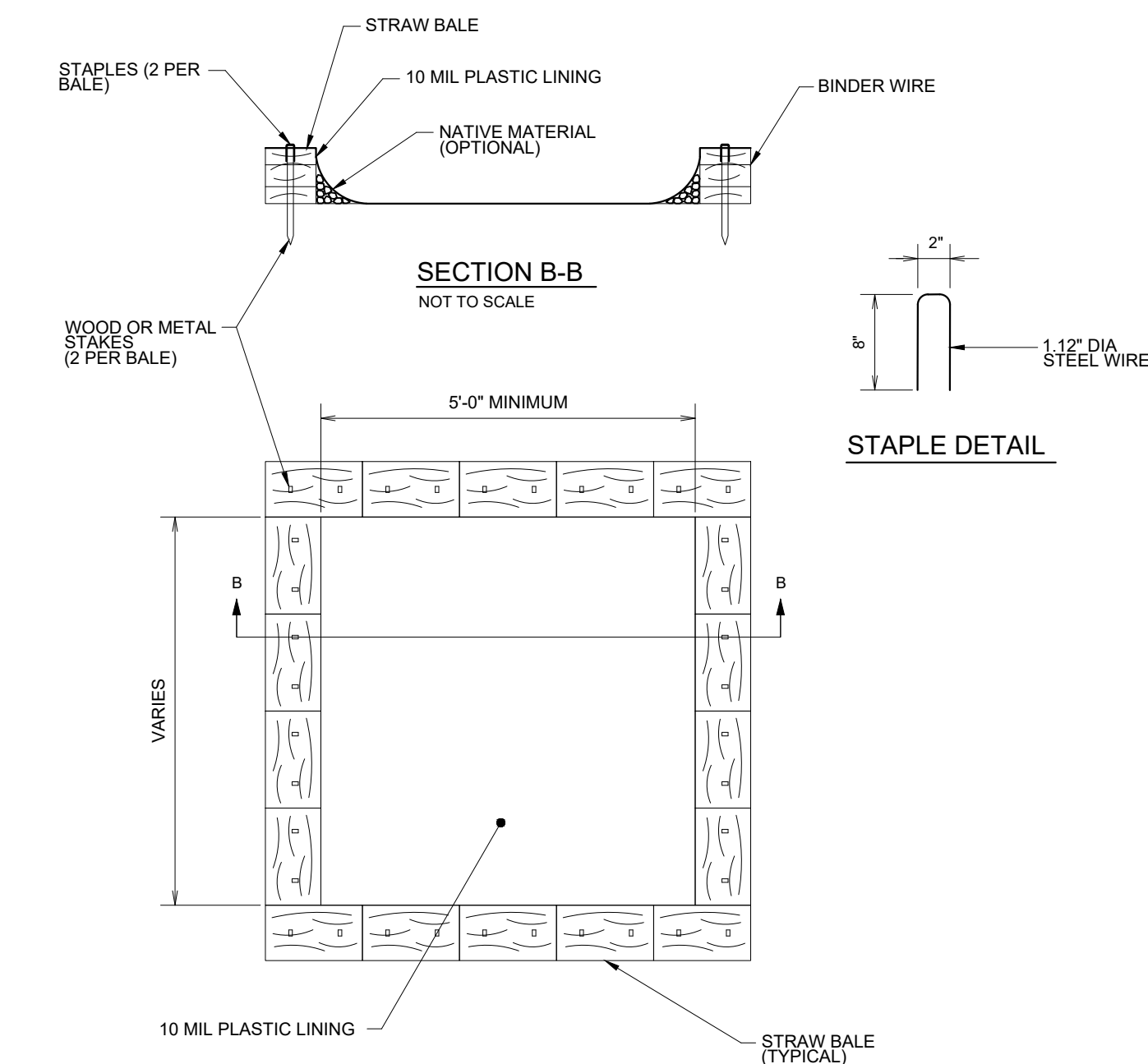
-  DISTURBED AREA
-  UNDISTURBED AREA
-  GRASS SEED
-  SEDIMENT FENCE WITH WIRE BACKING
-  DRAINAGE DIRECTION

NOTES (GENERAL):

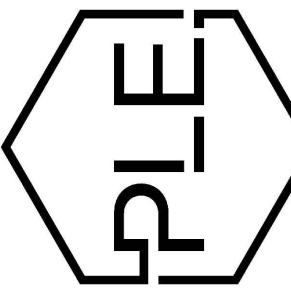
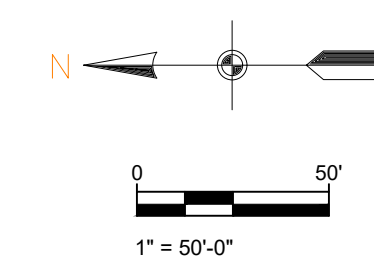
1. SEE EROSION CONTROL DETAILS IN SWPPP FOR EROSION CONTROL FACILITIES.
2. SEE SWPPP FOR INSTALLATION, MAINTENANCE, INSPECTION, AND RECORD KEEPING REQUIREMENTS.
3. CONTRACTOR SHALL SHOW EROSION CONTROL MEASURE ON SITE MAP.
4. EROSION AND SEDIMENT CONTROL STRUCTURES TO MEET SWPPP DETAILS - APPENDIX D
5. INSTALL ROCK DITCH, CHECK, OR SAND BAG CHECKS AS NECESSARY TO PREVENT SCOUR UNTIL LANDSCAPING IS ESTABLISHED.
6. CONTRACTOR MUST PLACE SEDIMENT BASIN WITH SEDIMENT FENCE OUTLET FOR ANY SEDIMENT CONTAMINATED DEWATERING DISCHARGE
7. FINAL SLOPE WILL BE SAME DIRECTION AS EXISTING SLOPE.



CONSTRUCTION ENTRANCE NOT TO SCALE



CONCRETE WASHOUT NOT TO SCALE



REVISION:

PRELIMINARY
NOT FOR CONSTRUCTION

PROJECT NUMBER:

SHEET ISSUE DATE:
12/12/2023

PAGE TITLE:

SWPPP PH. 1

SHEET NUMBER:

C1.9



SWPPP PH. 2

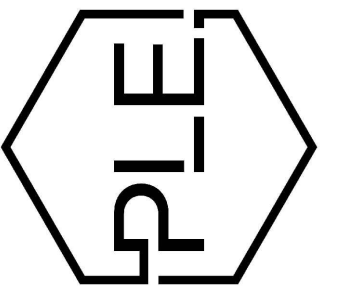
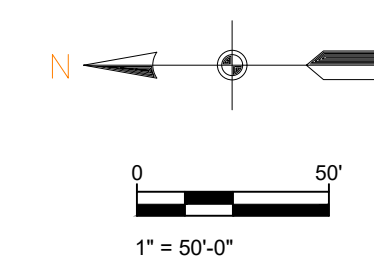
SCALE 1" = 50'

LEGEND

- DISTURBED AREA
- UNDISTURBED AREA
- GRASS SEED
- SEDIMENT FENCE WITH WIRE BACKING
- DRAINAGE DIRECTION

NOTES (GENERAL):

1. SEE EROSION CONTROL DETAILS IN SWPPP FOR EROSION CONTROL FACILITIES.
2. SEE SWPPP FOR INSTALLATION, MAINTENANCE, INSPECTION, AND RECORD KEEPING REQUIREMENTS.
3. CONTRACTOR SHALL SHOW EROSION CONTROL MEASURE ON SITE MAP.
4. EROSION AND SEDIMENT CONTROL STRUCTURES TO MEET SWPPP DETAILS - APPENDIX D
5. INSTALL ROCK DITCH, CHECK, OR SAND BAG CHECKS AS NECESSARY TO PREVENT SCOUR UNTIL LANDSCAPING IS ESTABLISHED.
6. CONTRACTOR MUST PLACE SEDIMENT BASIN WITH SEDIMENT FENCE OUTLET FOR ANY SEDIMENT CONTAMINATED DEWATERING DISCHARGE
7. FINAL SLOPE WILL BE SAME DIRECTION AS EXISTING SLOPE.



REVISION:

SUMMERWOOD SPORTS GYMNASIUM #3
7817 Hwy 5 N
Bryant, Arkansas

PRELIMINARY
NOT FOR CONSTRUCTION

PROJECT NUMBER:

SHEET ISSUE DATE:
12/12/2023

PAGE TITLE:

SWPPP PH. 2

SHEET NUMBER:

C1.10