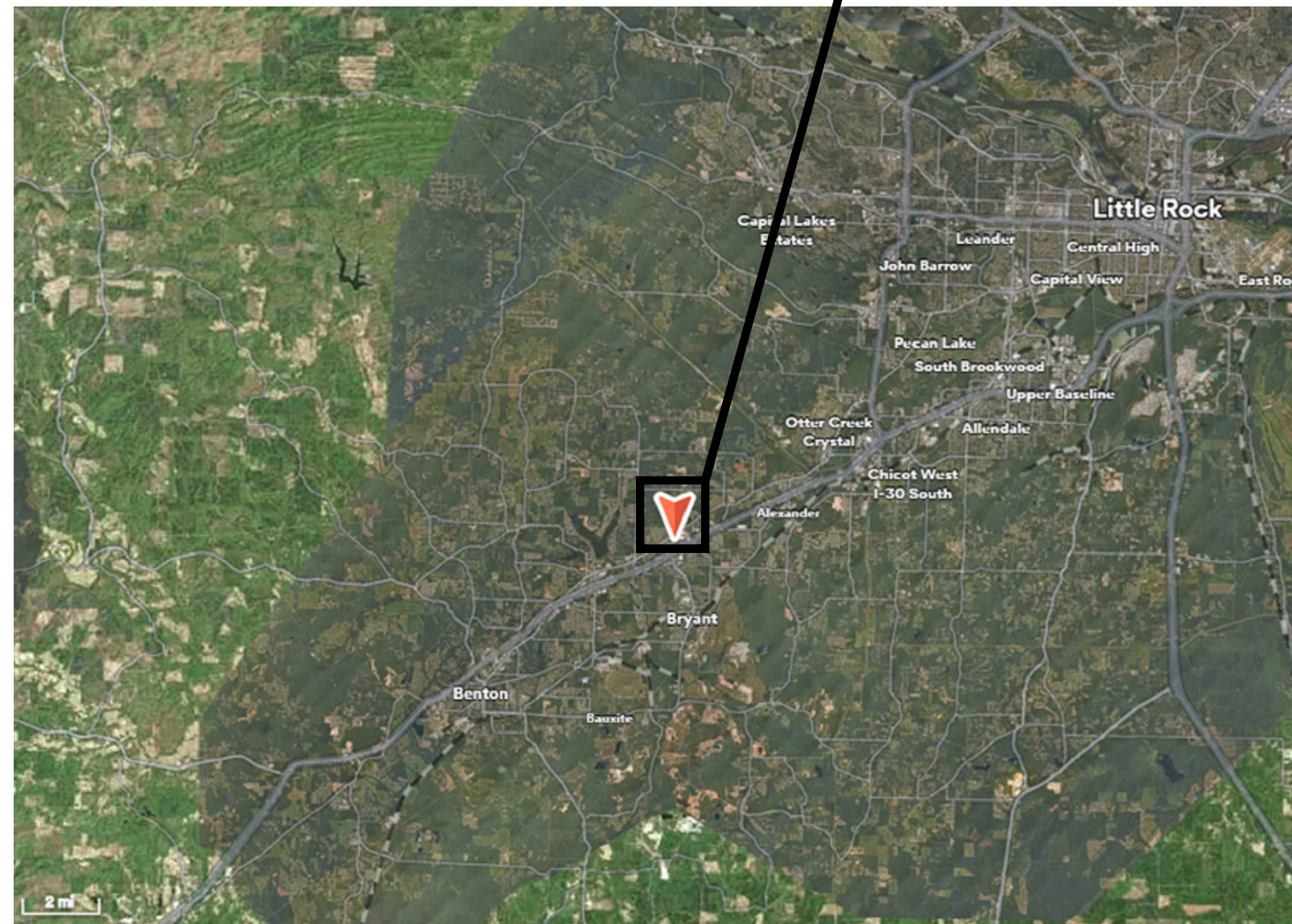


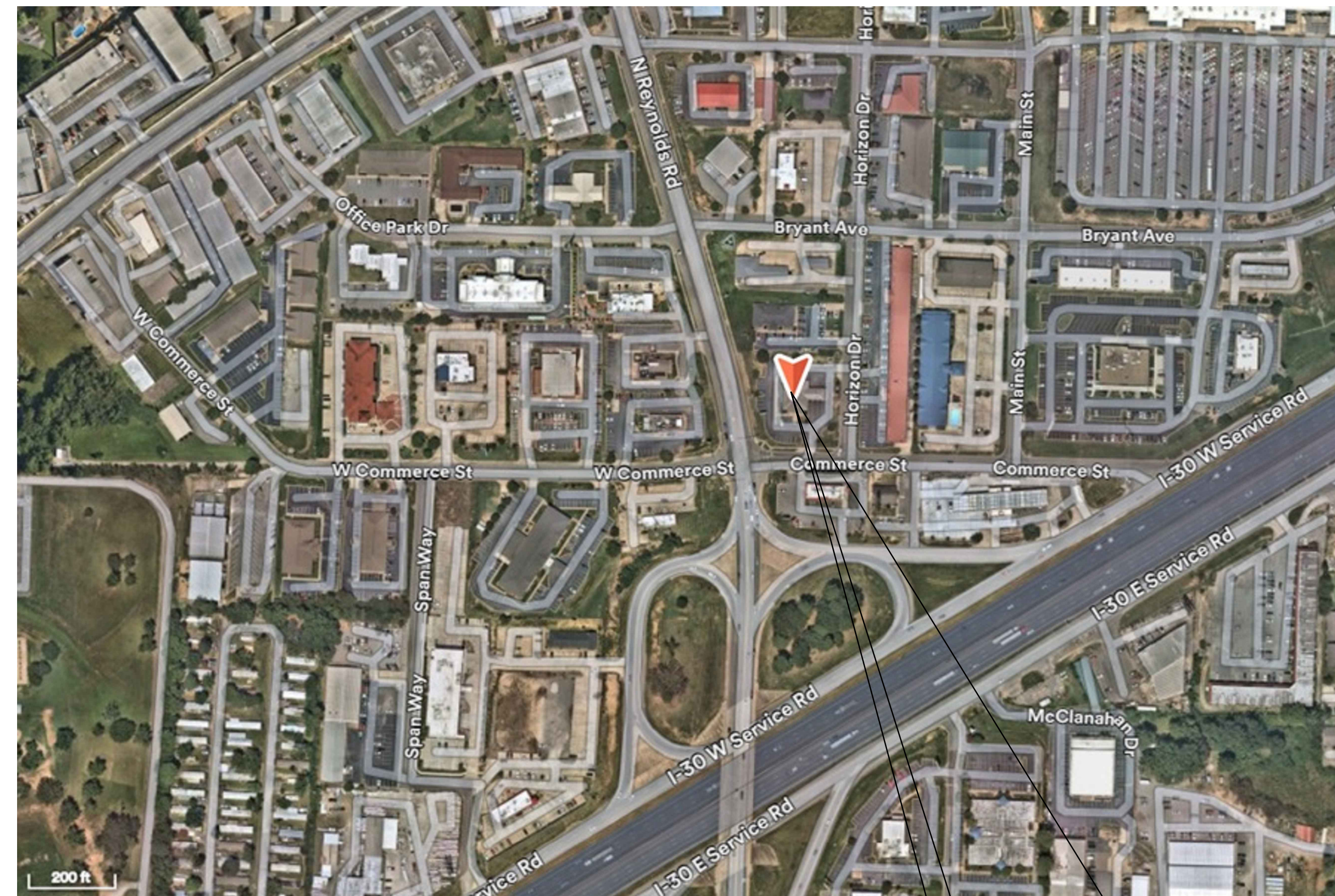
CONSTRUCTION PLANS FOR FLITE BANKING CENTERS, LLC.

ADDITION OF ATM DRIVE-UP IN EXISTING US BANK DRIVE THRU

100 COMMERCE STREET BRYANT, ARKANSAS 72022



PROJECT
SITE



PROJECT
LOCATION

100 COMMERCE STREET
BRYANT, ARKANSAS 72022

INDEX OF DRAWINGS:

- SITE PLAN DRAWING:
 A0.0 - TITLE SHEET
 A1.0 - SITE PLAN
 A1.1 - SITE SURVEY
 A2.0 - EXISTING/PROPOSED LAYOUT
 A2.1 - ISLAND REQ./MOUNTING DETAILS

PROJECT INFORMATION

SCOPE OF WORK: ADD AN ADDITIONAL
 DRIVE UP ATM IN
 EXISTING BANK DRIVE THRU



FLITE BANKING CENTERS, LLC.
 8955 KATY FREEWAY
 SUITE 107
 HOUSTON, TX 77024
 PH: (281) 886-3734

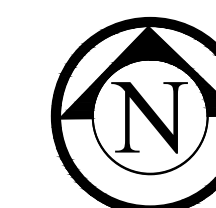
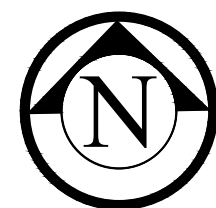
REVISIONS

NO.	DATE	DESCRIPTION

FLITE BANKING CENTERS, LLC.
 100 COMMERCE STREET
 BRYANT, ARKANSAS 72022

TITLE PAGE

VICINITY MAP
 NEARMAPS ©



PROJECT NO: WO-0272
 DATE: 2/1/2024
 DRAWN BY: DLD
 CHECKED BY: ---

SHEET

A0.0



1 SITE LOCATION
A1.0 SCALE: NTS



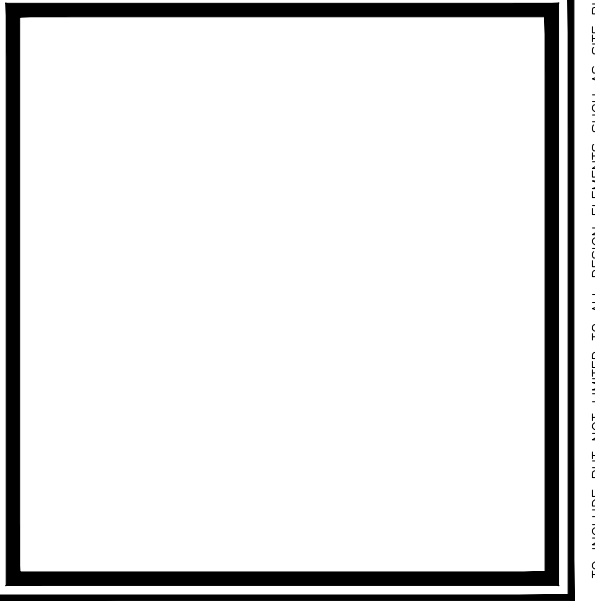
FLITE BANKING CENTERS, LLC.
8955 KATY FREEWAY
SUITE 107
HOUSTON, TX 77024
PH: (281) 886-3734

REVISIONS

NO.	DATE	DESCRIPTION
-	-	-

FLITE BANKING CENTERS, LLC.
100 COMMERCE STREET
BRYANT, ARKANSAS 72022

SITE PLAN

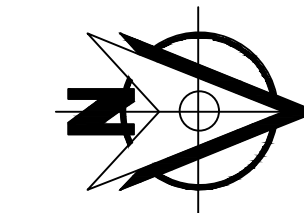


PROJECT NO: WO-0272
DATE: 2/1/2024
DRAWN BY: DLD
CHECKED BY: ---

SHEET

A1.0

COPYRIGHT © - BY FLITE BANKING CENTERS, LLC. ALL RIGHTS RESERVED. TO INCLUDE BUT NOT LIMITED TO: ALL DESIGN ELEMENTS SUCH AS SITE PLAN, GRADING, FINISHES, UTILITIES AND CONCEPTUAL LAYOUT. THESE RIGHTS ARE THE PROPERTY OF FLITE BANKING CENTERS, LLC. ANY OTHER PARTY AND REQUIRE WRITTEN AUTHORIZATION BY FLITE BANKING CENTERS, LLC. ADDITIONALLY, ANY VIOLATIONS OF THE TEXAS ENGINEERING PROFESSIONAL ACT AND RULES, BOARD OF PROFESSIONAL ENGINEERS, WILL BE REPORTED TO THE TEXAS BOARD OF PROFESSIONAL ENGINEERS.



FLITE BANKING CENTERS, LLC.
 8955 KATY FREEWAY
 SUITE 107
 HOUSTON, TX 77024
 PH: (281) 886-3734

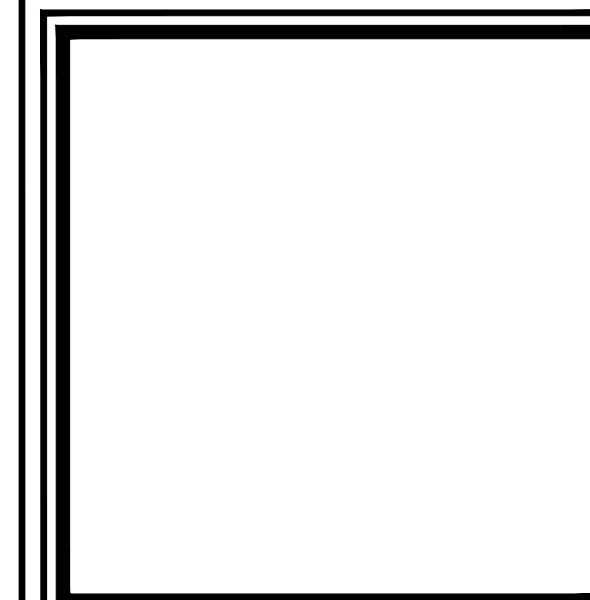
REVISIONS

NO.	DATE	DESCRIPTION



FLITE BANKING CENTERS, LLC.
 100 COMMERCE STREET
 BRYANT, ARKANSAS 72022

SITE SURVEY



PROJECT NO:
 DATE: 2/1/2024
 DRAWN BY: DLD
 CHECKED BY: ---

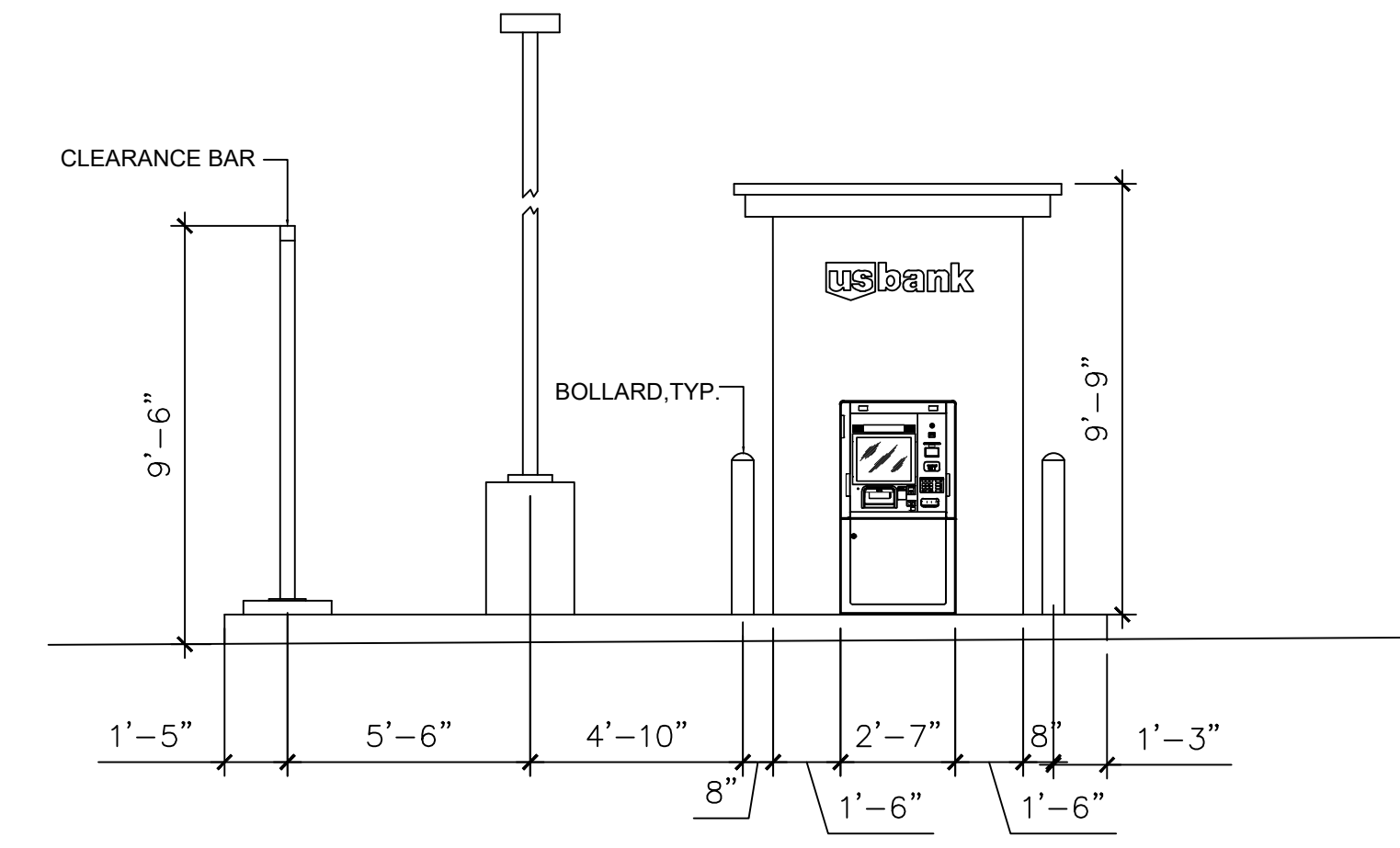
SHEET
A1.1

Copyright © - BY FLITE BANKING CENTERS, LLC. ALL RIGHTS RESERVED. TO INCLUDE BUT NOT LIMITED TO ALL DESIGN ELEMENTS SUCH AS SITE PLAN, GRADING, FINISHES, UTILITIES AND CONCEPTUAL LAYOUT. THESE RIGHTS PART THE USE OF THESE DRAWINGS BY ANY OTHER PARTY AND REQUIRE WRITTEN AUTHORIZATION BY FLITE BANKING CENTERS, LLC. FLITE BANKING CENTERS, LLC. IS NOT RESPONSIBLE FOR ANY ERRORS OR OMISSIONS. ADDITIONALLY ANY VIOLATIONS OF THE TEXAS ENGINEERING PRACTICE ACT AND RULES, BOARD PROVISIONS, STATUTES, REGULATIONS AND RULES, SHALL BE REPORTED TO THE TEXAS BOARD OF PROFESSIONAL ENGINEERS.

COVERED
DRIVE-THRU

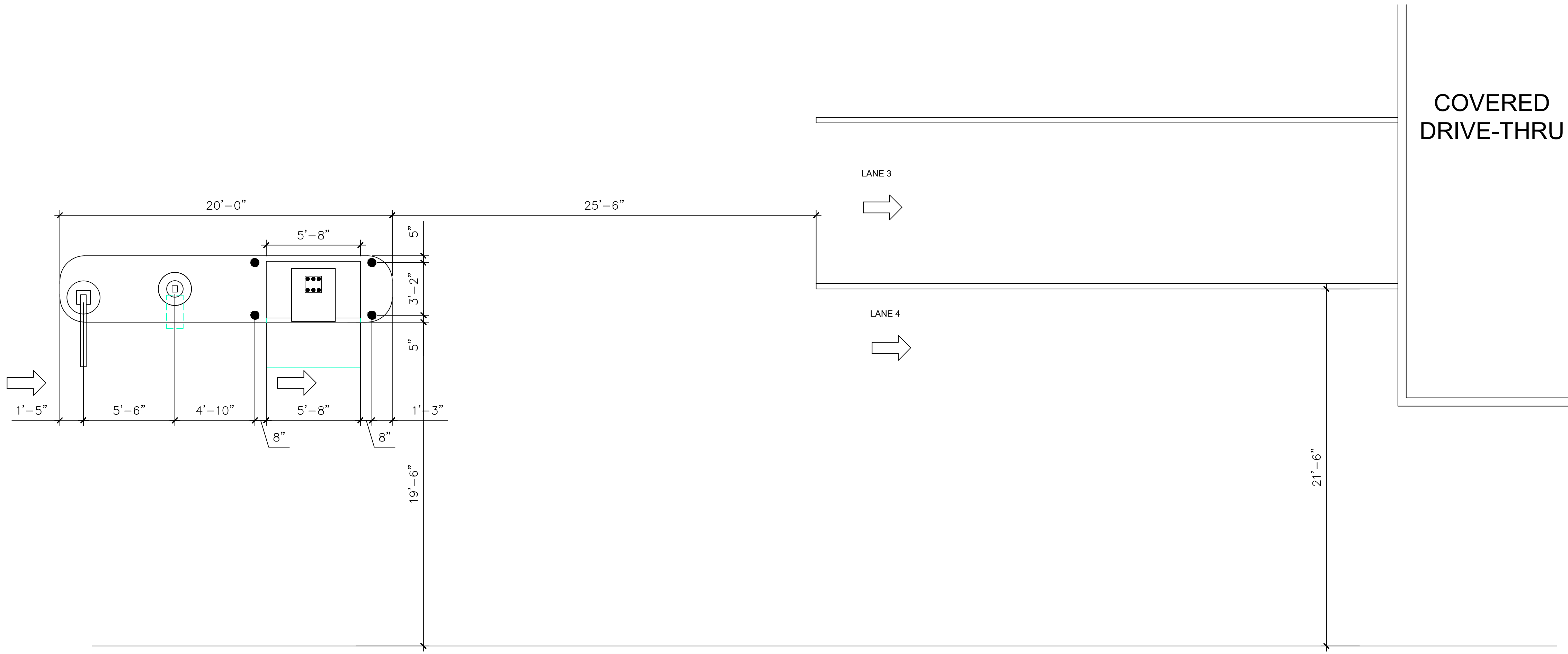
LANE 3
→

LANE 4
→



3 PROPOSED ATM ELEVATION
A1.0 SCALE: 1/4" = 1'-0"

1 EXISTING PLAN
A1.0 SCALE: 1/4" = 1'-0"



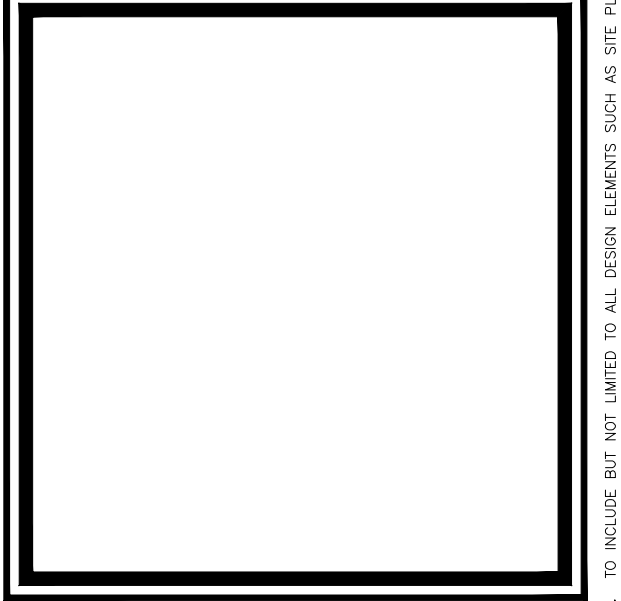
2 PROPOSED PLAN
A1.0 SCALE: 1/4" = 1'-0"



FLITE BANKING CENTERS, LLC.
8955 KATY FREEWAY
SUITE 107
HOUSTON, TX 77024
PH: (281) 886-3734

REVISIONS		
NO.	DATE	DESCRIPTION

FLITE BANKING CENTERS, LLC.
100 COMMERCE STREET
BRYANT, ARKANSAS 72022
EXISTING/PROPOSED LAYOUT



PROJECT NO: WO-0272
DATE: 2/1/2024
DRAWN BY: DLD
CHECKED BY: ---

SHEET
A2.0

COPYRIGHT © - BY FLITE BANKING CENTERS, LLC. ALL RIGHTS RESERVED. TO INCLUDE BUT NOT LIMITED TO: DESIGN, ELEMENTS, SUCH AS: SITE PLAN, GRADING, FINISHES, UTILITIES, AND CONCEPTUAL LAYOUT. THESE RIGHTS ARE THE PROPERTY OF FLITE BANKING CENTERS, LLC. ANY OTHER PARTY AND REQUIRE WRITTEN AUTHORIZATION BY FLITE BANKING CENTERS, LLC. ADDITIONALLY, ANY MODIFICATIONS OF THE TEXAS ENGINEERING PRACTICE ACT AND RULES, WHERE APPLICABLE, MUST BE REPORTED TO THE TEXAS BOARD OF PROFESSIONAL ENGINEERS.

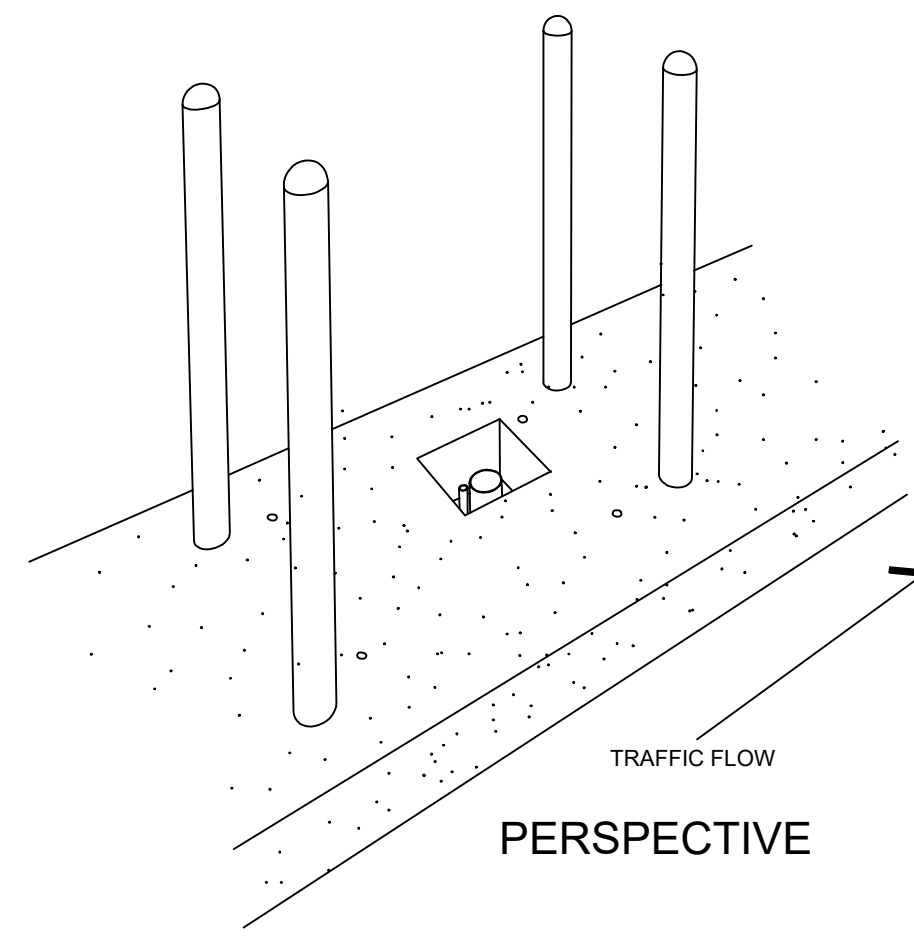


FLITE BANKING CENTERS, LLC.
8955 KATY FREEWAY
SUITE 107
HOUSTON, TX 77024
PH: (281) 886-3734

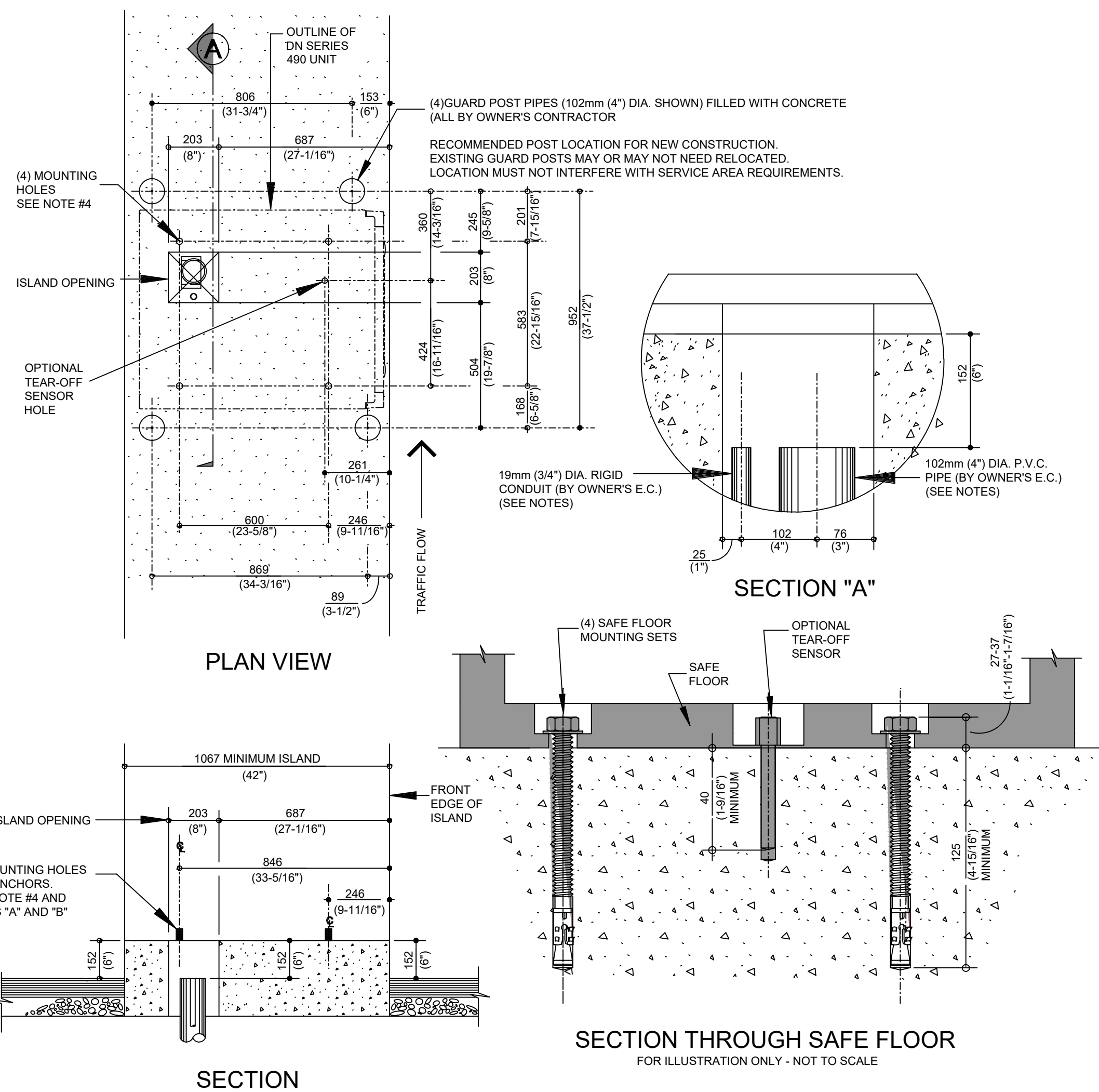
REVISIONS

NO.	DATE	DESCRIPTION

ISLAND REQUIREMENTS and SAFE MOUNTING DETAILS



DIMENSIONS IN MILLIMETERS
(DIMENSIONS IN INCHES)

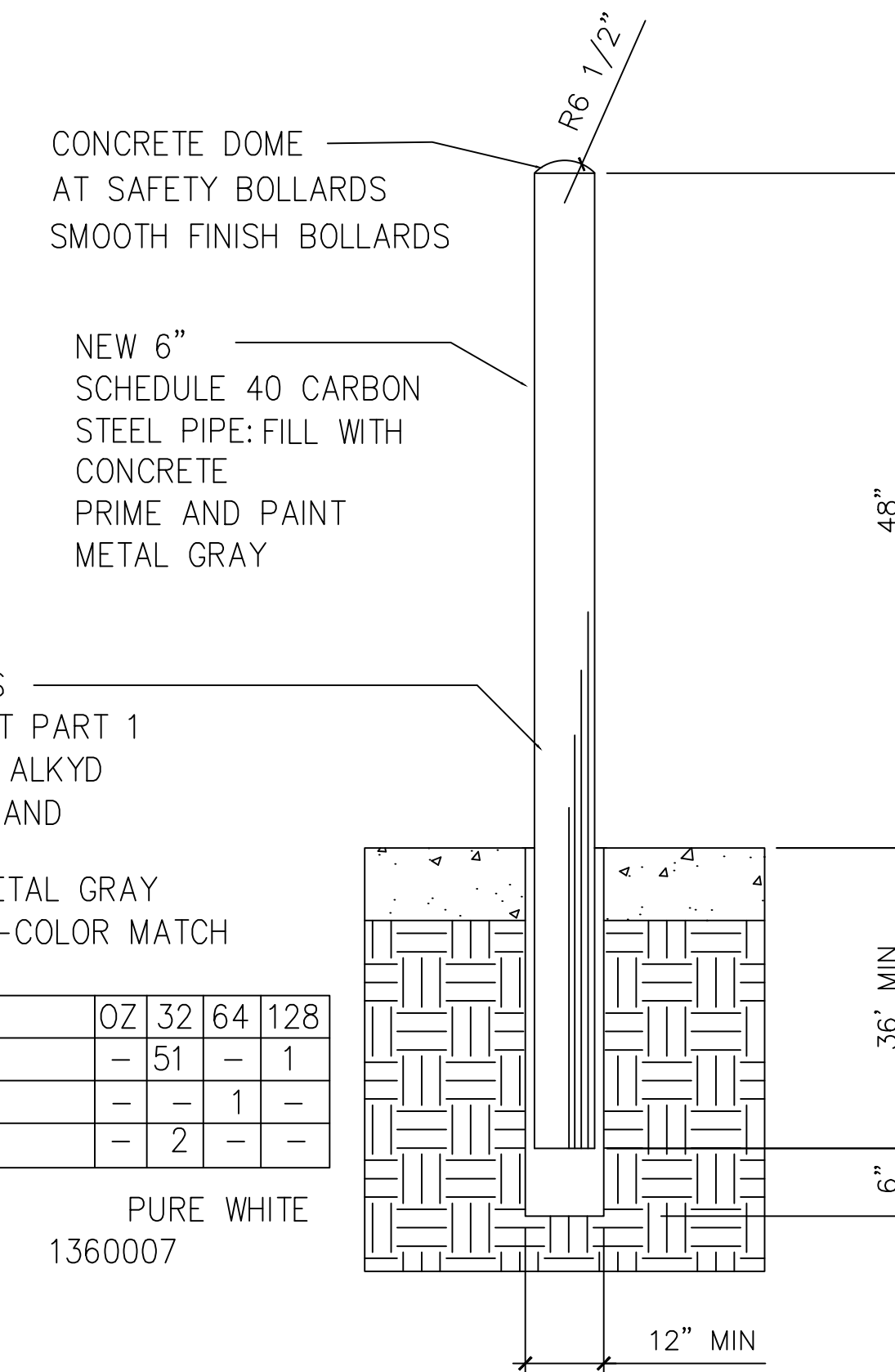


NEW CONSTRUCTION:

- OWNER'S E.C. TO FURNISH AND INSTALL (1) 19mm (3/4") RIGID CONDUIT FOR ELECTRICAL POWER (SEE POWER REQUIREMENTS)
 - OWNER'S E.C. TO FURNISH AND INSTALL 102mm (4") P.V.C. PIPE (RECOMMENDED METHOD FOR ROUTING COMMUNICATION CABLE, EXPRESS BUS CABLE, ALARM CABLE AND VIDEO CABLE)
- (ALTERNATE METHOD) OWNER'S ELECTRICAL CONTRACTOR TO FURNISH AND INSTALL (1) 25mm (1") RIGID CONDUIT FOR ALARM CABLE AND (1) 38mm (1 1/2") RIGID CONDUIT FOR COMMUNICATION CABLE, EXTERNAL OPTIONS CABLE, AND VIDEO CABLE.
- PLEASE CONTACT THE DIEBOLD NIXDORF INSTALLING BRANCH IF CONSIDERING ATTACHMENT OF A REMOTE DESKTOP MONITOR/KEYBOARD TO THIS PRODUCT.
 - DIEBOLD NIXDORF RECOMMENDS (4) M20 ANCHOR BOLTS 170mm (6 3/4") LONG FOR PROPERLY SECURING THE UNIT (PART #01750308241). THE OVERALL DRILLING DEPTH DEPENDS ON STRUCTURAL CONDITIONS. THE MOUNTING ANCHORS MUST BE LOCATED AT LEAST 125mm (4 15/16") DEEP IN THE LOAD BEARING CONCRETE (SEE DETAIL). ANCHOR BOLTS MUST BE USED IN ALL (4) AVAILABLE ANCHOR HOLES. IF MOUNTING KIT IS NOT PROVIDED, USE EQUIVALENT FASTENING MATERIAL. INSTALL ANCHORS IN ACCORDANCE WITH INSTALLATION TEMPLATE PART NUMBER #01750338732 (ALSO PROVIDED).
 - ISLAND TO BE FLAT AND LEVEL IN AREA OF UNIT.
 - ISLAND CONSTRUCTION MUST SUPPORT WEIGHT OF THE DN 490 UNIT 907kg (2,000 LBS) FOR UL OR CEN I OR 1004kg (2,209 LBS) FOR CEN III EXGAS SAFE.
 - OWNER'S INSTALLER TO SET LEVEL, SECURE UNIT TO CONCRETE ISLAND AND CAULK AROUND BASE.

EXISTING CONSTRUCTION:

- EXISTING ELECTRICAL CONDUIT, PNEUMATIC TUBE AND/OR P.V.C. PIPE MUST BE RE-ROUTED TO ALIGN WITH REQUIRED ISLAND OPENING, EXISTING PNEUMATIC TUBE OR P.V.C. PIPE MAY BE USED TO ROUTE COMMUNICATION CABLE, EXPRESS BUS CABLE, ALARM CABLE, AND VIDEO CABLE.
- EXISTING BUMPER GUARDS ON ISLAND MAY REQUIRE RELOCATION.



SHERWIN-WILLIAMS
INT/EXT IND MAINT PART 1
DIRECT TO METAL ALKYD
SEMI-GLOSS BY HAND

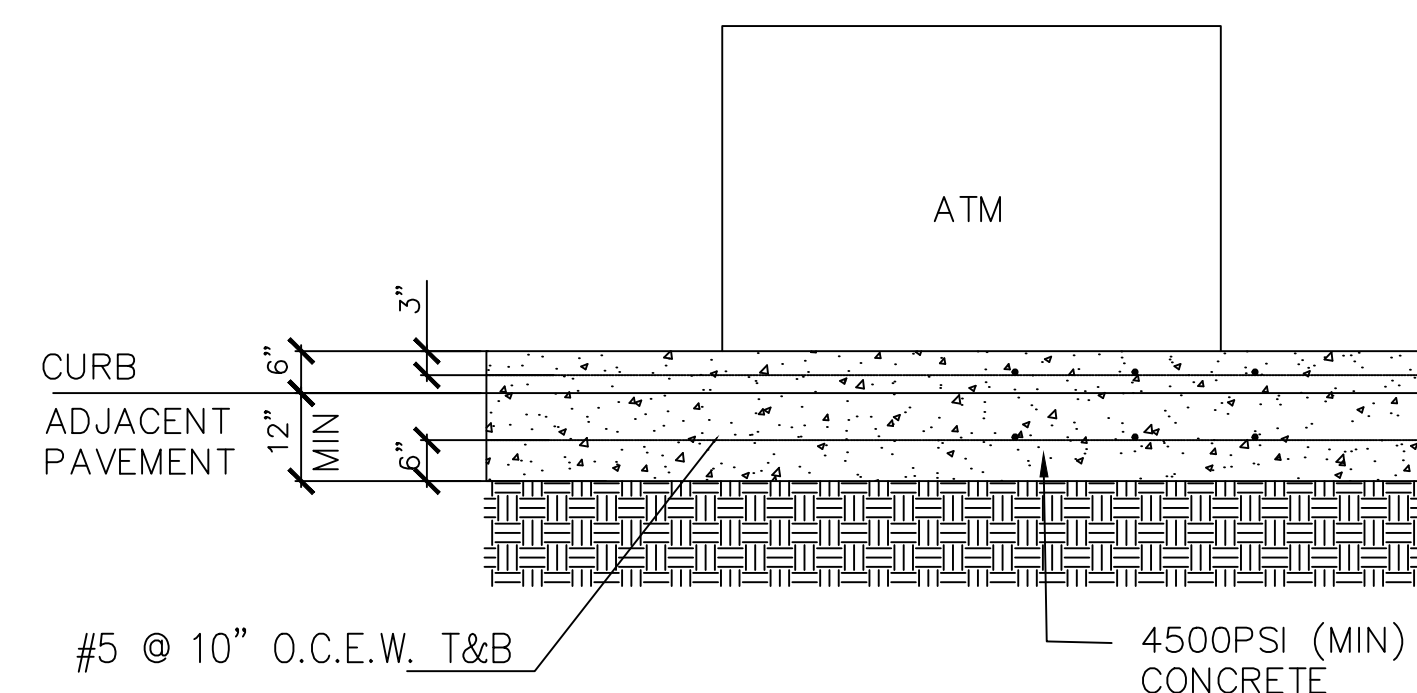
MATCH METAL GRAY
CUSTOM SHER-COLOR MATCH

BAC COLORANT	OZ	32	64	128
B1-BLACK	-	51	-	1
R2-MAROON	-	-	1	-
Y3-DEEP GOLD	-	2	-	-

ONE GALLON
B55W00101

PURE WHITE
1360007

BOLLARD DETAIL
NOT TO SCALE



ATM FOUNDATION DETAIL
NOT TO SCALE

- NOTE:**
- CONCRETE FOUNDATION BELOW ATM NEED TO BE MIN 18" WITH REINFORCEMENT TO MATCH THE ISLAND INFILL.
 - PROPOSED ATM ISLAND TO BE 6" ABOVE ADJACENT PAVEMENT.
 - CONTRACTOR TO ENSURE BOTTOM OF FOOTING IS BELOW FROST DEPTH LINE OR NON-FROST SUSCEPTIBLE FILL IS PLACED TO FROST LEVEL BELOW STRUCTURAL SLAB.

FLITE BANKING CENTERS, LLC.
100 COMMERCE STREET
BRYANT, ARKANSAS 72022

ISLAND REQ./MOUNTING DETAILS

PROJECT NO: WO-0272
DATE: 2/1/2024
DRAWN BY: DLD
CHECKED BY: ---

SHEET

A2.1