



# AGENDA ITEM HISTORY SHEET

---

**ITEM TITLE**

Hilldale-Midland Connector Trail

**AGENDA NO. 5****AGENDA DATE:** 5/28/2024

---

**FUNDING CERTIFICATION** (Finance Director) (Signature, if applicable)

001-0420-5816 see budget adjustment list at may meeting *JB 5/21/24*

---

**MANAGEMENT STAFF REVIEW** (Signature)

---

**MAYOR** (Signature)

---

**ITEM HISTORY** (Previous Council reviews, action related to this item, and other pertinent history)

The Hilldale-Midland Connector Trail project secured the Surface Transportation Block Grant (STBG) from Metroplan in 2022, totaling \$285,000, with a match of \$71,250. However, due to project expenses surpassing the initial grant amount while collaborating with Garver, we are seeking additional funding opportunities.

---

**ITEM COMMENTARY** (Background discussion, key points, recommendations, etc.) Please identify any or all impacts this proposed action would have on the City budget, personnel resources, and/or residents.

The Hilldale-Midland Trail Connector, an integral part of the Walk, Bike, Drive: Bryant – Master Bike/Pedestrian Plan, will span approximately 2.4 miles. This trail serves as a crucial link between four neighborhoods, connecting around 400 homes to essential community amenities such as an existing Municipal Soccer Facility, a future Nature Park spanning 59 acres, and Parkway Elementary School. As a key component of the city's broader vision, this trail is set to connect to existing trail systems to enhance active transportation and community connectivity. With the current design shortfall and ROW acquisition, we are planning to apply for the full amount of the grant, \$500,000, making the 20% match \$100,000.

---

(This section to be completed by the Mayor)

**ACTION PROPOSED** (Motion for Consideration)

A motion to accept this resolution to utilize federal-aid Transportation Alternatives Program or Recreational Trails Program Funds.

RESOLUTION NO. \_\_\_\_\_

**A RESOLUTION EXPRESSING THE WILLINGNESS OF**

**CITY OF BRYANT**

**TO UTILIZE FEDERAL-AID TRANSPORTATION ALTERNATIVES PROGRAM OR  
RECREATIONAL TRAILS PROGRAM FUNDS**

**WHEREAS**, City of Bryant understands Federal-aid Transportation Alternatives Program or Recreational Trails Program Funds are available at 80% federal participation and 20% local match to develop or improve Hilldale-Midland Connector Trail, and

**WHEREAS**, City of Bryant understands that Federal-aid Funds are available for this project on a reimbursable basis, requiring work to be accomplished and proof of payment prior to actual monetary reimbursement, and

**WHEREAS**, this project, using federal funding, will be open and available for use by the general public and maintained by the applicant for the life of the project.

**NOW THEREFORE, BE IT RESOLVED BY BRYANT CITY COUNCIL THAT:**

**SECTION I:** City of Bryant will participate in accordance with its designated responsibility, including maintenance of this project. The Streets, Pro Services Engineering account (GL Line: 080-0800-5571) will cover the local match requirement.

**SECTION II:** Mayor Chris Treat is hereby authorized and directed to execute all appropriate agreements and contracts necessary to expedite the construction of the above stated project.

**SECTION III:** Bryant City Council pledges its full support and hereby authorizes the Arkansas Department of Transportation to initiate action to implement this project.

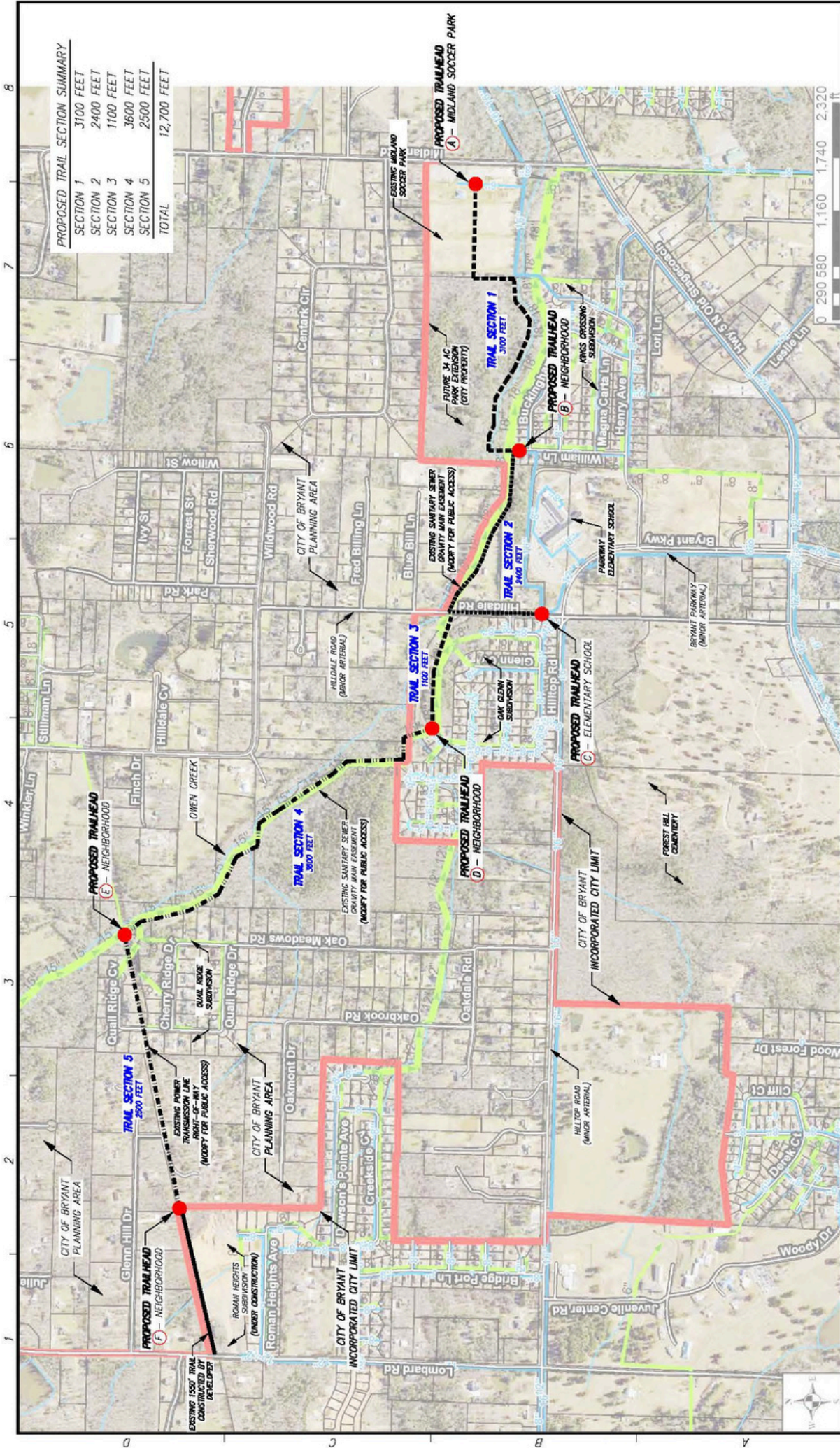
**THIS RESOLUTION** adopted this 28th day of May, 2024.

Signed: \_\_\_\_\_

**Chris Treat  
Mayor of Bryant**

**ATTEST:** \_\_\_\_\_  
(SEAL)

# Hilldale-Midland Connector Trail



**PROPOSED TRAIL SECTION SUMMARY**

SECTION 1	3100 FEET
SECTION 2	2400 FEET
SECTION 3	1100 FEET
SECTION 4	3600 FEET
SECTION 5	2500 FEET
<b>TOTAL</b>	<b>12,700 FEET</b>

APPROVED BY:	DESIGNED BY:	REVISION DESCRIPTION:	BY:	DATE:	SCALE:	LOCATION:	DRG. TITLE:	REVISION NO./DATE:
	COB	A MOVED X	JSD	07/20/17	0' 500' 1000'	MIDLAND/HILDALE TRAIL PROPOSED LAYOUT GENERAL ARRANGEMENT	CITY OF BRYANT PROPOSED TRAIL STBC GRANT	A - 10/12/22
TITLE:	SIGNATURE:	DATE:						PROJECT NO.:
TITLE:	SIGNATURE:	DATE:						
TITLE:	SIGNATURE:	DATE:						SHEET NO.:
								1 OF 1



**Legend**

- Proposed Trail
- Water Line
- Sewer Line
- City Limits