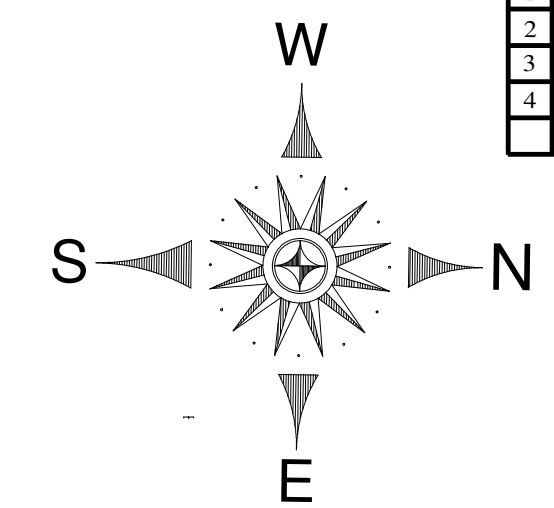
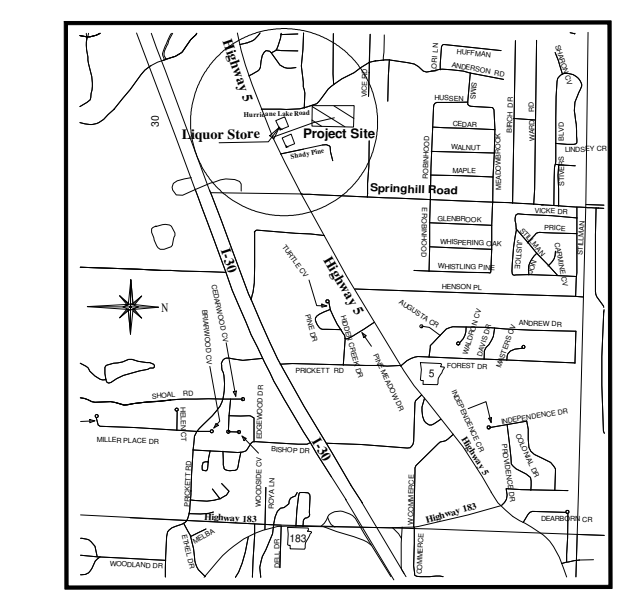


REVISED ON	BY	REASON
1	9-29-21	CB
2	12-20-21	CB
3		
4		



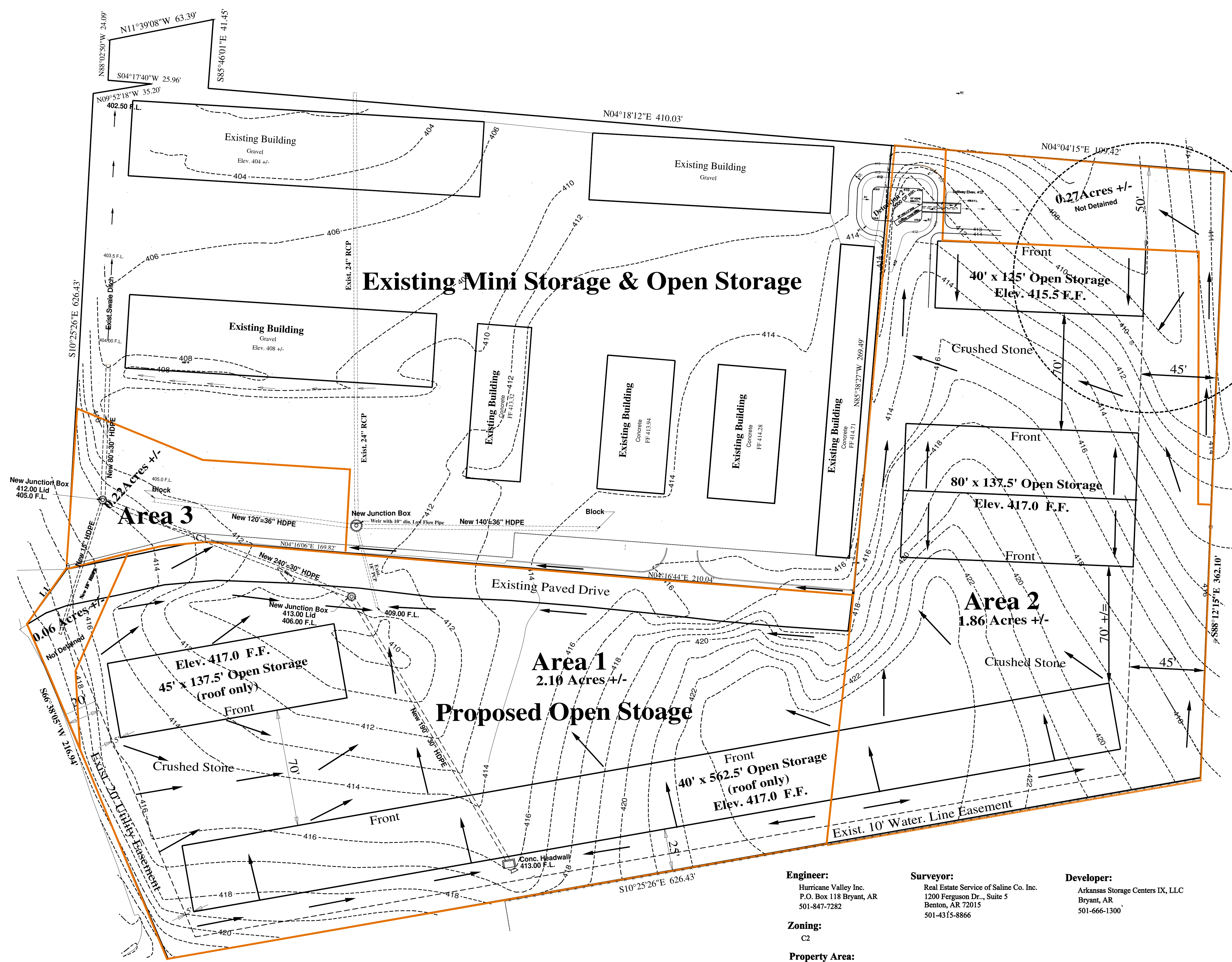
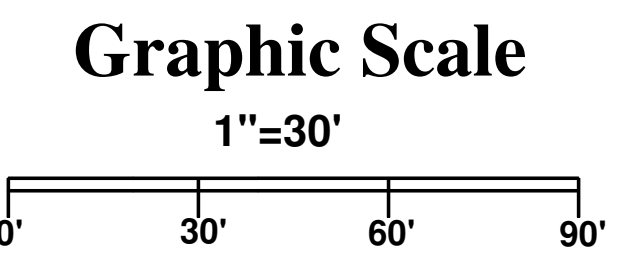
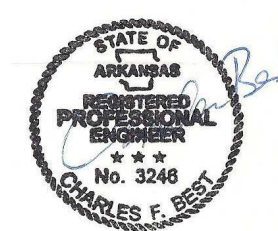
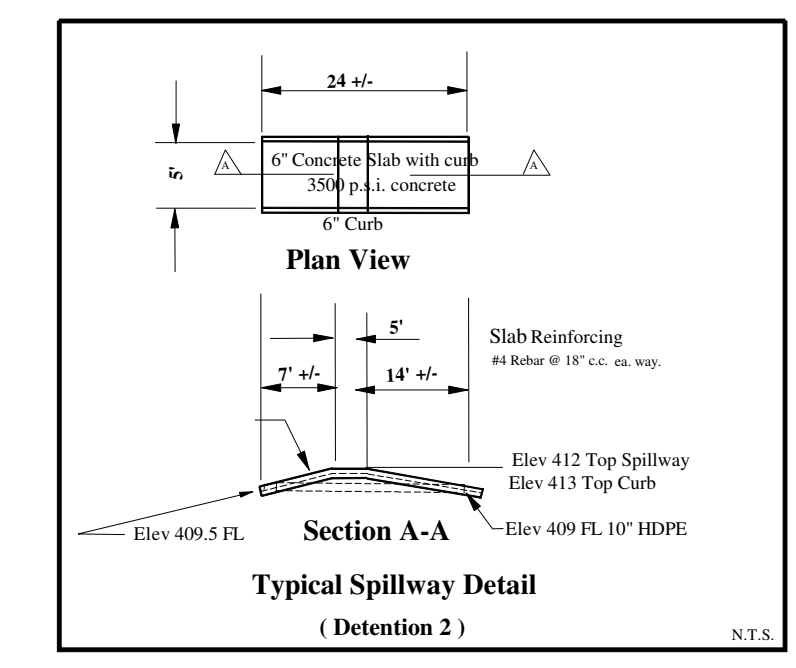
BASIS OF BEARING IS
GRID NORTH ARKANSAS
SOUTH ZONE
NAD83
VERTICAL DATUM
NAVD 88



Vicinity Map
NTA

Note:

A request to the Crop of Engineers in Vicksburg for an approved Jurisdictional Determination of this area has been made. Until this is resolved only clearing will be done in this area.



Legal Description.

That portion of the SE1/4 of SE1/4, Section 20, T-1-S, R-14-W, Saline County, Arkansas, described as beginning at the NW corner of said SE1/4 of SE1/4, run thence N 87°16'02" W, along the north line thereof a distance of 284.76 feet; thence N 09°52'18" W, a distance of 35.20 feet; thence S 04°17'40" W, a distance of 25.96 feet; thence N 88°02'50" W, a distance of 24.09 feet; thence N 11°39'08" W, a distance of 63.39 feet; thence S 85°46'01" E, a distance of 41.45 feet; thence N 04°18'12" E, a distance of 410.03 feet; thence N 04°04'15" E, a distance of 199.42 feet; thence S 88°12'15" E, a distance of 362.10 feet; thence S 10°25'26" E, a distance of 626.43 feet; thence S 66°38'05" W, a distance of 216.94 feet; thence N 54°38'24" W, a distance of 40.56 feet to the point of beginning, containing 6.96 Acres, more or less.

LINE	BEARING	DISTANCE
L1	N54°31'16"W	40.56'

LINE	CHORD BEARING	RADIUS	DELTA	CHORD
C1	N04°04'34"W	78.00'	16°40'55"	22.63'

Engineer:
Hurricane Valley Inc.
P.O. Box 118 Bryant, AR
501-847-7282

Surveyor:
Real Estate Service of Saline Co. Inc.
1200 Ferguson Dr., Suite 5
Benton, AR 72015
501-4315-8866

Developer:
Arkansas Storage Centers IX, LLC
Bryant, AR
501-666-1300

Zoning:
C2

Property Area:
6.96 Acres, 303,178 SF

HURRICANE VALLEY INC.
Professional Engineering Consultants

P.O. BOX 118
BRYANT, ARKANSAS 501-847-7282

SCALE: 1" = 30' DATE: 9-01-21

Open Storage
Detention Plan

Bryant, Arkansas

HVI Job No. 16047 1 OF 1